

## C165LMHABXUMA1



### International Rectifier (Infineon Technologies)

IC MCU 16BIT ROMLESS 100MQFP  
Lead free / RoHS Compliant  
Integrated Circuits (ICs)

[C165LMHABXUMA1.pdf](#)

[Buy Now](#)

We can supply International Rectifier (Infineon Technologies) C165LMHABXUMA1, use the request quote form to request C165LMHABXUMA1 price, International Rectifier (Infineon Technologies) Datasheet PDF and lead time. Zeanoit.com is a professional electronic components distributor. With 3+ Million line items of available electronic components can ship in short lead-time, over 250 thousand part numbers of electronic components in stock for immediately delivery, which may include part number C165LMHABXUMA1. The price and lead time for C165LMHABXUMA1 depending on the quantity required, availability and warehouse location.

**Out Stock**

**0 pcs**

Minimum: 1

Multiples: 100

Manufacturer lead time 10 weeks

### Shopping Process

1

Confirm the product

2

submit the order

3

payment

4

wait for delivery

5

receive the goods

### Specifications

<b>Voltage - Supply (Vcc/Vdd):</b>	4.5 V ~ 5.5 V
<b>Supplier Device Package:</b>	100-MQFP (14x20)
<b>Speed:</b>	20MHz
<b>Series:</b>	C16xx
<b>RAM Size:</b>	2K x 8
<b>Program Memory Type:</b>	ROMless
<b>Program Memory Size:</b>	-
<b>Peripherals:</b>	POR, PWM, WDT
<b>Packaging:</b>	Tape & Reel (TR)
<b>Package / Case:</b>	100-BQFP
<b>Oscillator Type:</b>	External
<b>Operating Temperature:</b>	0°C ~ 70°C (TA)
<b>Number of I/O:</b>	77
<b>EEPROM Size:</b>	-
<b>Data Converters:</b>	-
<b>Core Size:</b>	16-Bit
<b>Core Processor:</b>	C166
<b>Connectivity:</b>	EBI/EMI, SPI, UART/USART

### Related products



#### C165LFHABXUMA1

IC MCU 16BIT ROMLESS 100TQFP  
[Infineon Technologies](#)

RFQ



#### C1670A.30.10

CABLE 2COND 22AWG GRY SHLD 1000'  
[General Cable/Carol Brand](#)

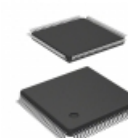
RFQ



#### C165LFHAFXUMA1

IC MCU 16BIT ROMLESS 100TQFP  
[Infineon Technologies](#)

RFQ



#### C165LFHABXQMA1

IC MCU 16BIT ROMLESS 100TQFP  
[Infineon Technologies](#)

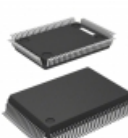
RFQ



#### C1670A.41.10

MULTI-PAIR 4COND 22AWG GRY 1000'  
[General Cable/Carol Brand](#)

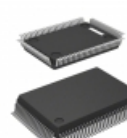
RFQ



#### C165LMHAFXUMA1

IC MCU 16BIT ROMLESS 100MQFP  
[Infineon Technologies](#)

RFQ



#### C165LMHAFXQMA1

IC MCU 16BIT ROMLESS 100MQFP  
[Infineon Technologies](#)

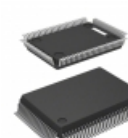
RFQ



#### C165LM3VHAFXUMA1

IC MCU 16BIT ROMLESS 100MQFP  
[Infineon Technologies](#)

RFQ



#### C165LMHABXQMA1

IC MCU 16BIT ROMLESS 100MQFP  
[Infineon Technologies](#)

RFQ



#### C1670A.18.10

MULTI-PAIR 4COND 22AWG SHLD 500'  
[General Cable/Carol Brand](#)

RFQ

### Guess You May Looking For



#### EL7630IWTZ-T7

IC LED DRIVER RGLTR DIM TSOT23-5  
[Intersil](#)

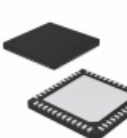
RFQ



#### U2044B-MFPG3Y-66

IC FLASH CONTROL 10W DUAL 14SOIC  
[Microchip Technology](#)

RFQ



#### MAX5953AUTM+

IC CTRLR PD 802.3AF 48TQFN  
[Maxim Integrated](#)

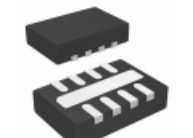
RFQ



#### AP1702BWG-7

IC MPU RESET CIRC 4.38V SC59-3  
[Diodes Incorporated](#)

RFQ



#### LTC2916CDDDB-1#TRMPBF

IC VOLT SUPERVISOR 8-DFN  
[Linear Technology](#)

RFQ



#### X5043M8Z-4.5A

IC CPU SUPERV 4K EEPROM 8-MSOP  
[Intersil](#)

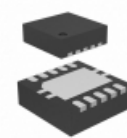
RFQ



#### AD780ANZ

IC VREF SERIES/SHUNT PROG 8DIP  
[Analog Devices Inc.](#)

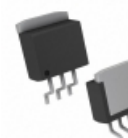
RFQ



#### TPS71202DRCTG4

IC REG LDO ADJ 0.25A 10SON  
[Texas Instruments](#)

RFQ



#### LD29300D2M25R

IC REG LDO 2.5V 3A P2PAK  
[STMicroelectronics](#)

RFQ



#### MIC29312BU TR

IC REG LDO ADJ 3A TO263-5  
[Microchip Technology](#)

RFQ

