

STK629-719M-E



[AMI Semiconductor / ON Semiconductor](#)

IC MOTOR DRIVER
Lead free / RoHS Compliant
Integrated Circuits (ICs)

Buy Now

part#STK629-719M-E is available, see description of STK629-719M-E as below .
use the request quote form to request STK629-719M-E price and lead time.
Buy Electronic Components at zeanoit.com .we are an independent distributor of
electronic components with extensive inventory in stock.
The price and lead time for STK629-719M-E depending on the quantity required,
availability and warehouse location.Contact us today and our sales team will send you
quotation soon.
Email: sales@zeanoit.com

Shopping Process

1

Confirm the product

2

submit the order

3

payment

4

wait for delivery

5

receive the goods

Specifications

Series: *

Related products



STK629-719-E
IC MOTOR DRIVER
[ON Semiconductor](#)

RFQ



STK629-719L-E
IC MOTOR DRIVER
[ON Semiconductor](#)

RFQ



STK629-719J-E
IC MOTOR DRIVER
[ON Semiconductor](#)

RFQ



STK630F
[AUK](#)

RFQ



STK629-719K-E
IC MOTOR DRIVER
[ON Semiconductor](#)

RFQ



STK629-720-E
[SANYO](#)

RFQ



STK629-730-E
[SANYO](#)

RFQ



STK630
[AUK](#)

RFQ



STK629-730
[SANYO](#)

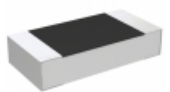
RFQ



STK628-131B-E
IC MOTOR DRIVER
[ON Semiconductor](#)

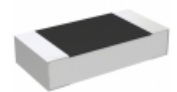
RFQ

Guess You May Looking For



RP73D2B60R4BTG
RES SMD 60.4 OHM 0.1% 1/4W 1206
[TE Connectivity Passive Product](#)

RFQ



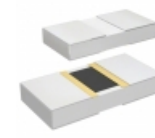
RP73D2B3K65BTG
RES SMD 3.65K OHM 0.1% 1/4W 1206
[TE Connectivity Passive Product](#)

RFQ



SM6227FT2K32
RES SMD 2.32K OHM 1% 3W 6227
[Stackpole Electronics Inc.](#)

RFQ



PHP00805E5421BBT1
RES SMD 5.42K OHM 0.1% 5/8W 0805
[Vishay Thin Film](#)

RFQ



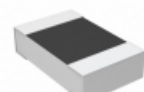
RG2012V-6980-B-T5
RES SMD 698 OHM 0.1% 1/8W 0805
[Susumu](#)

RFQ



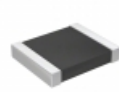
RN73C2A1K87BTG
RES SMD 1.87KOHM 0.1% 1/10W 0805
[TE Connectivity Passive Product](#)

RFQ



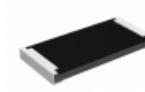
1676319-5
RES SMD 38.3KOHM 0.1% 1/10W 0805
[TE Connectivity Passive Product](#)

RFQ



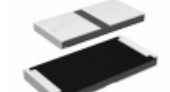
RT1210WRD0725K5L
RES SMD 25.5KOHM 0.05% 1/4W 1210
[Yageo](#)

RFQ



RCP2512B200RJTP
RES SMD 200 OHM 5% 22W 2512
[Vishay Dale](#)

RFQ



RCP2512W620RGEA
RES SMD 620 OHM 2% 22W 2512
[Vishay Dale](#)

RFQ