

DS28E07+W



[Maxim Integrated](#)

IC EEPROM 1KBIT 1WIRE
Lead free / RoHS Compliant
Integrated Circuits (ICs)

Buy Now

We can supply DS28E07+W, use the request quote form to request DS28E07+W price and lead time. Zeano is a professional electronic components distributor. With 3+ Million line items of available electronic components can ship in short lead-time, over 250 thousand part numbers of electronic components in stock for immediately delivery, which may include part number DS28E07+W. The price and lead time for DS28E07+W depending on the quantity required and warehouse location. Contact us and our sales representative will provide you price. We look forward to work with you.

Shopping Process

1

Confirm the product

2

submit the order

3

payment

4

wait for delivery

5

receive the goods

Specifications

Voltage - Supply:	3 V ~ 5.25 V
Supplier Device Package:	-
Speed:	-
Series:	-
Packaging:	-
Package / Case:	-
Operating Temperature:	-40°C ~ 85°C (TA)
Memory Type:	Non-Volatile
Memory Size:	1Kb (256 x 4)
Memory Format:	EEPROM
Interface:	1-Wire® Serial

Related products



DS28E07P+T
IC EEPROM 1KBIT 1WIRE 6TSOC
[Maxim Integrated](#)

RFQ



DS28E07P+
IC EEPROM 1KBIT 1WIRE 6TSOC
[Maxim Integrated](#)

RFQ



DS28E05R+T
IC EEPROM 896BIT 1WIRE SOT23-3
[Maxim Integrated](#)

RFQ



DS28E07Q+U
IC EEPROM 1KBIT 1WIRE 6DFN
[Maxim Integrated](#)

RFQ



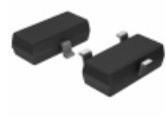
DS28E07+
IC EEPROM 1KBIT 1WIRE TO92
[Maxim Integrated](#)

RFQ



DS28E10P+
in stock
[MAXIM](#)

RFQ



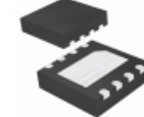
DS28E05R+U
IC EEPROM 896BIT 1WIRE SOT23-3
[Maxim Integrated](#)

RFQ



DS28E05P+T
IC EEPROM 896BIT 1WIRE 6TSOC
[Maxim Integrated](#)

RFQ



DS28E07Q+T
IC EEPROM 1KBIT 1WIRE 6DFN
[Maxim Integrated](#)

RFQ



DS28E07+T
IC EEPROM 1KBIT 1WIRE TO92
[Maxim Integrated](#)

RFQ

Guess You May Looking For



MCR50JZH47R0
RES SMD 47 OHM 1% 1/2W 2010
[Rohm Semiconductor](#)

RFQ



RR1220P-3481-D-M
RES SMD 3.48KOHM 0.5% 1/10W 0805
[Susumu](#)

RFQ



KTR03EZPF1104
RES SMD 1.1M OHM 1% 1/10W 0603
[Rohm Semiconductor](#)

RFQ



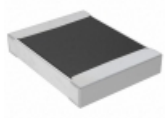
AF0402JR-076R2L
RES SMD 6.2 OHM 5% 1/16W 0402
[Yageo](#)

RFQ



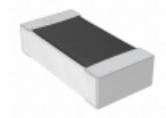
RR1220P-3243-D-M
RES SMD 324K OHM 0.5% 1/10W 0805
[Susumu](#)

RFQ



RMCF1210FT1M62
RES SMD 1.62M OHM 1% 1/3W 1210
[Stackpole Electronics Inc.](#)

RFQ



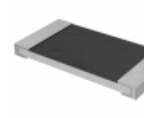
RNCF0603DTE604R
RES SMD 604 OHM 0.5% 1/10W 0603
[Stackpole Electronics Inc.](#)

RFQ



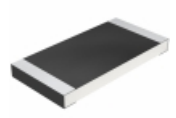
RNCF0402DKE8K06
RES SMD 8.06KOHM 0.5% 1/16W 0402
[Stackpole Electronics Inc.](#)

RFQ



RMCF2512FT6M04
RES SMD 6.04M OHM 1% 1W 2512
[Stackpole Electronics Inc.](#)

RFQ



CRCW25122R55FNEG
RES SMD 2.55 OHM 1% 1W 2512
[Vishay Dale](#)

RFQ