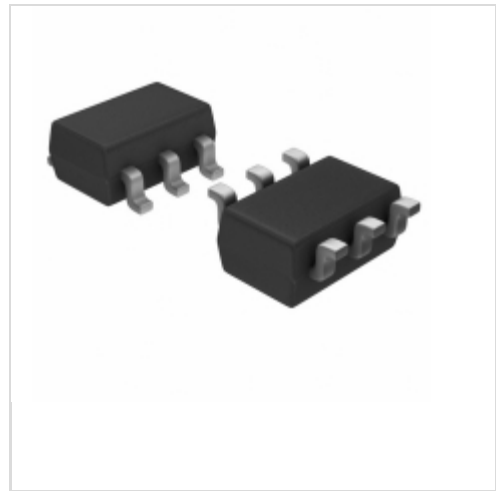


S-1011CA0-M6T1U4



SII Semiconductor Corporation

IC VOLT DETECTOR

Lead free / RoHS Compliant

Integrated Circuits (ICs)

[S-1011CA0-M6T1U4.pdf](#)

Buy Now

Out Stock

0 pcs

Minimum:1

Multiples:100

Manufacturer lead time 10 weeks

We can supply S-1011CA0-M6T1U4, use the request quote form to request S-1011CA0-M6T1U4 price and lead time. Zeano is a professional electronic components distributor. With 3+ Million line items of available electronic components can ship in short lead-time, over 250 thousand part numbers of electronic components in stock for immediately delivery, which may include part number S-1011CA0-M6T1U4. The price and lead time for S-1011CA0-M6T1U4 depending on the quantity required and warehouse location. Contact us and our sales representative will provide you price. We look forward to work with you.

Shopping Process

1

Confirm the product

2

submit the order

3

payment

4

wait for delivery

5

receive the goods

Specifications

Voltage - Threshold:	10V
Type:	Voltage Detector
Supplier Device Package:	SOT-23-6
Series:	S-1011
Reset Timeout:	-
Reset:	Active Low
Packaging:	Tape & Reel (TR)
Package / Case:	SOT-23-6
Output:	Open Drain or Open Collector
Operating Temperature:	-40°C ~ 85°C (TA)
Number of Voltages Monitored:	1
Mounting Type:	Surface Mount

Related products



S-1011C5H-M6T1U4

IC VOLT DETECTOR

[SII Semiconductor Corporation](#)

RFQ



S-1011E70-M6T1U4

IC VOLT DETECTOR

[SII Semiconductor Corporation](#)

RFQ

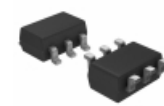


S-1011E90-M6T1U4

IC VOLT DETECTOR

[SII Semiconductor Corporation](#)

RFQ



S-1011E80-M6T1U4

IC VOLT DETECTOR

[SII Semiconductor Corporation](#)

RFQ



S-1011E50-M6T1U4

IC VOLT DETECTOR

[SII Semiconductor Corporation](#)

RFQ



S-1011C80-M6T1U4

IC VOLT DETECTOR

[SII Semiconductor Corporation](#)

RFQ



S-1011C70-M6T1U4

IC VOLT DETECTOR

[SII Semiconductor Corporation](#)

RFQ



S-1011C60-M6T1U4

IC VOLT DETECTOR

[SII Semiconductor Corporation](#)

RFQ



S-1011C90-M6T1U4

IC VOLT DETECTOR

[SII Semiconductor Corporation](#)

RFQ



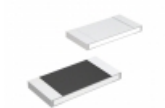
S-1011E60-M6T1U4

IC VOLT DETECTOR

[SII Semiconductor Corporation](#)

RFQ

Guess You May Looking For

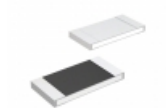


MCR03EZPFX4123

RES SMD 412K OHM 1% 1/10W 0603

[Rohm Semiconductor](#)

RFQ

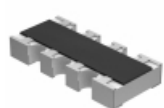


MCR50JZHF5901

RES SMD 5.9K OHM 1% 1/2W 2010

[Rohm Semiconductor](#)

RFQ

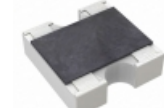


CRA06S08310K0JTA

RES ARRAY 4 RES 10K OHM 1206

[Vishay Dale](#)

RFQ



YC162-JR-0736KL

RES ARRAY 2 RES 36K OHM 0606

[Yageo](#)

RFQ

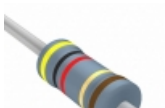


ALSR011R000FE12

RES 1 OHM 1W 1% AXIAL

[Vishay Dale](#)

RFQ

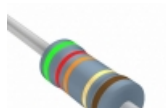


MFR-25FRF52-40R2

RES 40.2 OHM 1/4W 1% AXIAL

[Yageo](#)

RFQ



MFR-25FRF52-52R3

RES 52.3 OHM 1/4W 1% AXIAL

[Yageo](#)

RFQ

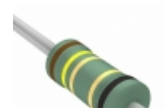


CF14JA16M0

RES 16M OHM 1/4W 5% AXIAL

[Stackpole Electronics Inc.](#)

RFQ



NKN1WSJR-52-1R4

RES 1.4 OHM 1W 5% AXIAL

[Yageo](#)

RFQ



RNF14BTE2K40

RES 2.4K OHM 1/4W .1% AXIAL

[Stackpole Electronics Inc.](#)

RFQ