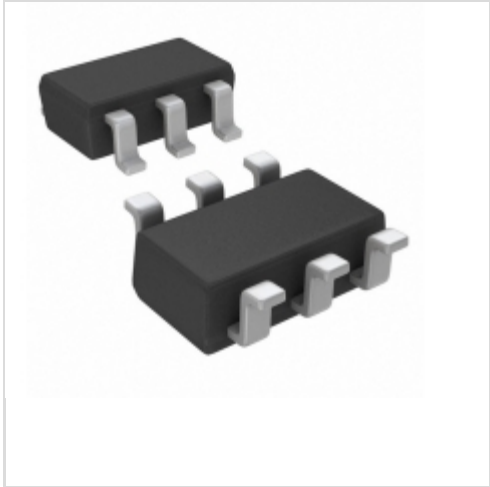


LT1790BCS6-5#TRPBF



Out Stock

0 pcs

Mininum:1

Multiples:100

Manufacturer lead time 10 weeks

Linear Technology / Analog Devices

IC VREF SERIES 5V SOT23-6

Lead free / RoHS Compliant

Integrated Circuits (ICs)

PDF

LT1790BCS6-5#TRPBF.pdf

Buy Now

Images are for reference only.

See Product Specifications for product details.

If you are interested to buy LT1790BCS6-5#TRPBF,Just Email us.

Sales@zeanoit.com

our sales team will reply you within 24 hours

Shopping Process

1

Confirm the product

2

submit the order

3

payment

4

wait for delivery

5

receive the goods

Specifications

Voltage - Output (Min/Fixed):	5V
Voltage - Output (Max):	-
Voltage - Input:	5.5 V ~ 18 V
Tolerance:	±0.1%
Temperature Coefficient:	25ppm/°C
Supplier Device Package:	TSOT-23-6
Series:	-
Reference Type:	Series
Packaging:	Tape & Reel (TR)
Package / Case:	SOT-23-6 Thin, TSOT-23-6
Output Type:	Fixed
Operating Temperature:	0°C ~ 70°C (TA)
Noise - 10Hz to 10kHz:	118µVrms
Noise - 0.1Hz to 10Hz:	80µVp-p
Mounting Type:	Surface Mount
Current - Supply:	80µA
Current - Output:	5mA
Current - Cathode:	-

Related products



LT1790BCS6-4.096#TRMPBF

IC VREF SERIES 4.096V SOT23-6

Linear Technology

RFQ



LT1790BCS6-5#TRMPBF

IC VREF SERIES 5V SOT23-6

Linear Technology

RFQ



LT1790BIS6-2.048#TRMPBF

IC VREF SERIES 2.048V SOT23-6

Linear Technology

RFQ



LT1790BCS6-4.096#TR

LINEAR

RFQ



LT1790BCS6-5

LINEAR

RFQ



LT1790BIS6-1.25#TRMPBF

IC VREF SERIES 1.25V SOT23-6

Linear Technology

RFQ



LT1790BIS6-2.5

in stock

LINEAR

RFQ



LT1790BIS6-1.25#TRPBF

IC VREF SERIES 1.25V SOT23-6

Linear Technology

RFQ



LT1790BIS6-2.048#TRPBF

IC VREF SERIES 2.048V SOT23-6

Linear Technology

RFQ



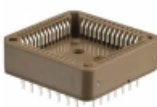
LT1790BCS6-4.096#TRPBF

IC VREF SERIES 4.096V SOT23-6

Linear Technology

RFQ

Guess You May Looking For



8452-11B1-RK-TP

CONN SOCKET PLCC 52POS TIN

3M

RFQ



0322-0-15-15-34-27-10-0

CONN PIN RCPT .032-.046 SOLDER

Mill-Max Manufacturing Corp.

RFQ



SIT1602BC-23-18N-40.500000E

-20 TO 70C, 3225, 50PPM, 1.8V, 4

SITIME

RFQ



SIT1602BC-33-18N-62.500000T

-20 TO 70C, 5032, 50PPM, 1.8V, 6

SITIME

RFQ



SIT1602BI-21-30E-33.333000D

-40 TO 85C, 3225, 20PPM, 3.0V, 3

SITIME

RFQ



SIT8008BI-11-33E-7.372800D

OSC MEMS 7.3728MHZ LVCMOS SMD

SITIME

RFQ



SIT1602BC-33-33N-12.000000X

-20 TO 70C, 5032, 50PPM, 3.3V, 1

SITIME

RFQ



SIT1602BC-81-18S-8.192000X

-20 TO 70C, 7050, 20PPM, 1.8V, 8

SITIME

RFQ



SIT9001AC-14-18E1-75.00000T

OSC MEMS 75.0000MHZ LVCMOS SMD

SITIME

RFQ



SIT8919BE-32-18E-125.003125Y

OSC MEMS 125.003125MHZ LVCMOS

SITIME

RFQ

