

MAX6315US44D1-T



Maxim Integrated

IC RESET CIRCUIT 4.39V SOT143-4
 Contains lead / RoHS non-compliant
 Integrated Circuits (ICs)

- [1.MAX6315US44D1-T.pdf](#)
- [2.MAX6315US44D1-T.pdf](#)

Buy Now

We can supply MAX6315US44D1-T, use the request quote form to request MAX6315US44D1-T price and lead time. Zeano is a professional electronic components distributor. With 3+ Million line items of available electronic components can ship in short lead-time, over 250 thousand part numbers of electronic components in stock for immediately delivery, which may include part number MAX6315US44D1-T. The price and lead time for MAX6315US44D1-T depending on the quantity required and warehouse location. Contact us and our sales representative will provide you price. We look forward to work with you.

Shopping Process



1
Confirm the product



2
submit the order



3
payment



4
wait for delivery



5
receive the goods

Specifications

Voltage - Threshold:	4.39V
Type:	Simple Reset/Power-On Reset
Supplier Device Package:	SOT-143-4
Series:	-
Reset Timeout:	1 ms Minimum
Reset:	Active Low
Packaging:	Tape & Reel (TR)
Package / Case:	TO-253-4, TO-253AA
Output:	Open Drain or Open Collector
Operating Temperature:	-40°C ~ 125°C (TA)
Number of Voltages Monitored:	1
Mounting Type:	Surface Mount

Related products



MAX6315US43D4-T
 in stock
[MAXIM](#)

RFQ



MAX6315US44D2+T
 IC RESET CIRCUIT 4.39V SOT143-4
[Maxim Integrated](#)

RFQ



MAX6315US43D3-T
 in stock
[MAXIM](#)

RFQ



MAX6315US43D2-T
 in stock
[MAXIM](#)

RFQ



MAX6315US43D3-T
 IC RESET CIRCUIT 4.30V SOT143-4
[Maxim Integrated](#)

RFQ



MAX6315US44D3-T
 in stock
[MAXIM](#)

RFQ



MAX6315US44D1
 in stock
[MAXIM](#)

RFQ



MAX6315US44D2-T
 in stock
[MAXIM](#)

RFQ



MAX6315US44D2
 in stock
[MAXIM](#)

RFQ



MAX6315US44D3+T
 IC RESET CIRCUIT 4.39V SOT143-4
[Maxim Integrated](#)

RFQ

Guess You May Looking For



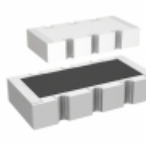
MCR18EZPF1472
 RES SMD 14.7K OHM 1% 1/4W 1206
[Rohm Semiconductor](#)

RFQ



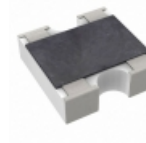
MCR25JZHJSR047
 RES SMD 0.047 OHM 5% 1/2W 1210
[Rohm Semiconductor](#)

RFQ



RAVF164DJT62K0
 RES ARRAY 4 RES 62K OHM 1206
[Stackpole Electronics Inc.](#)

RFQ



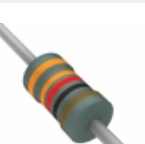
AF162-JR-0751KL
 RES ARRAY 2 RES 51K OHM 0606
[Yageo](#)

RFQ



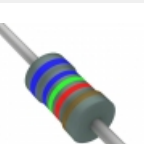
CAT16-333J8LF
 RES ARRAY 8 RES 33K OHM 2506
[Bourns Inc.](#)

RFQ



RNF14FTC332R
 RES 332 OHM 1/4W 1% AXIAL
[Stackpole Electronics Inc.](#)

RFQ



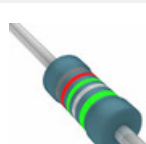
RNF14FAC66K5
 RES 66.5K OHM 1/4W 1% AXIAL
[Stackpole Electronics Inc.](#)

RFQ



MBA02040C9768FCT00
 RES 9.76 OHM 0.4W 1% AXIAL
[Vishay BC Components](#)

RFQ



MBB02070C8258DC100
 RES 8.25 OHM 0.6W 0.5% AXIAL
[Vishay BC Components](#)

RFQ



RN50C5361FRE6
 RES 5.36K OHM 1/20W 1% AXIAL
[Vishay Dale](#)

RFQ