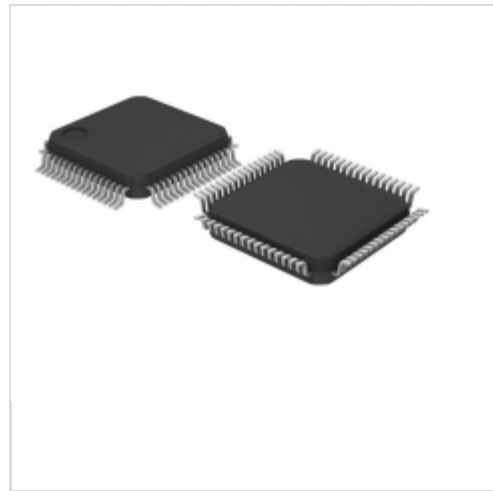


**ADE5166ASTZF62**



**ADI (Analog Devices, Inc.)**  
 IC METER/8052/RTC/LCD DRV 64LQFP  
 Lead free / RoHS Compliant  
 Integrated Circuits (ICs)

[ADE5166ASTZF62.pdf](#)

**Buy Now**

Images are for reference only.  
 See Product Specifications for product details.  
 If you are interested to buy ADE5166ASTZF62, Just Email us.  
 Sales@zeanoit.com  
 our sales team will reply you within 24 hours

Shopping Process

**1**

Confirm the product

**2**

submit the order

**3**

payment

**4**

wait for delivery

**5**

receive the goods

Specifications

|                                 |                 |
|---------------------------------|-----------------|
| <b>Voltage - Supply:</b>        | 2.4 V ~ 3.7 V   |
| <b>Voltage - I/O Low:</b>       | 0.4V, 0.8V      |
| <b>Voltage - I/O High:</b>      | 1.3V, 2V, 2.4V  |
| <b>Supplier Device Package:</b> | 64-LQFP (10x10) |
| <b>Series:</b>                  | -               |
| <b>Packaging:</b>               | Tray            |
| <b>Package / Case:</b>          | 64-LQFP         |
| <b>Operating Temperature:</b>   | -40°C ~ 85°C    |
| <b>Mounting Type:</b>           | Surface Mount   |
| <b>Meter Type:</b>              | Single Phase    |
| <b>Measurement Error:</b>       | 0.1%            |
| <b>Input Impedance:</b>         | 770 kOhm        |
| <b>Current - Supply:</b>        | 4.4mA           |

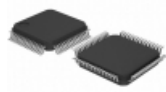
Related products



**ADE3700SX**

in stock  
ST

RFQ



**ADE5169ASTZF62**

IC METER/8052/RTC/LCD DR 64LQFP  
Analog Devices Inc.

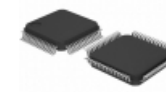
RFQ



**ADE3800SXL**

in stock  
ST

RFQ



**ADE5166ASTZF62-RL**

IC METER/8052/RTC/LCD DRV 64LQFP  
Analog Devices Inc.

RFQ



**ADE5166\_09**

in stock  
ADI

RFQ



**ADE5166**

in stock  
ADI

RFQ



**ADE3800XL**

in stock  
ST

RFQ



**ADE5166\_08**

in stock  
ADI

RFQ



**ADE3300**

in stock  
ST

RFQ

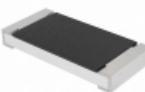


**ADE5169**

in stock  
ADI

RFQ

Guess You May Looking For



**CRCW201014R3FKEFHP**

RES SMD 14.3 OHM 1% 1W 2010  
Vishay Dale

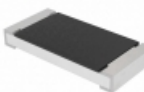
RFQ



**CRCW201097K6FKEFHP**

RES SMD 97.6K OHM 1% 1W 2010  
Vishay Dale

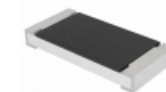
RFQ



**CRCW201043R2FKEFHP**

RES SMD 43.2 OHM 1% 1W 2010  
Vishay Dale

RFQ



**CRCW201044K2FKEFHP**

RES SMD 44.2K OHM 1% 1W 2010  
Vishay Dale

RFQ



**RG3216N-1601-D-T5**

RES SMD 1.6K OHM 0.5% 1/4W 1206  
Susumu

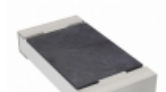
RFQ



**RNCF2512DKE4K22**

RES SMD 4.22K OHM 0.5% 1/2W 2512  
Stackpole Electronics Inc.

RFQ



**RT1206CRD072R21L**

RES SMD 2.21 OHM 0.25% 1/4W 1206  
Yageo

RFQ



**RG1005N-2261-D-T10**

RES SMD 2.26KOHM 0.5% 1/16W 0402  
Susumu

RFQ



**RG1005N-6981-D-T10**

RES SMD 6.98KOHM 0.5% 1/16W 0402  
Susumu

RFQ



**RNCF1210DTC32K4**

RES SMD 32.4K OHM 0.5% 1/3W 1210  
Stackpole Electronics Inc.

RFQ