

**MAX30033CTA+T**



[Maxim Integrated](#)

IC SURGE SUPPRESSION 10.3V 8UMAX

Lead free / RoHS Compliant

Circuit Protection

[MAX30033CTA+T.pdf](#)

**Buy Now**

We can supply MAX30033CTA+T, use the request quote form to request MAX30033CTA+T price and lead time. Zeano is a professional electronic components distributor. With 3+ Million line items of available electronic components can ship in short lead-time, over 250 thousand part numbers of electronic components in stock for immediately delivery, which may include part number MAX30033CTA+T. The price and lead time for MAX30033CTA+T depending on the quantity required and warehouse location. Contact us and our sales representative will provide you price. We look forward to work with you.

**Out Stock**

**0 pcs**

Minimum: 1

Multiples: 100

Manufacturer lead time 10 weeks

Shopping Process

**1**

**Confirm the product**

**2**

**submit the order**

**3**

**payment**

**4**

**wait for delivery**

**5**

**receive the goods**

Specifications

<b>Voltage - Clamping:</b>	10.3V
<b>Technology:</b>	Internal Switch
<b>Supplier Device Package:</b>	8-uMAX
<b>Series:</b>	-
<b>Packaging:</b>	Tape & Reel (TR)
<b>Package / Case:</b>	8-TSSOP, 8-MSOP (0.118", 3.00mm Width)
<b>Number of Circuits:</b>	3
<b>Mounting Type:</b>	Surface Mount
<b>Applications:</b>	General Purpose

Related products



**MAX30034CTA+T**

IC SURGE SUPPRESSION 10.3V 8UMAX

[Maxim Integrated](#)

RFQ



**MAX30032CTA+T**

IC SURGE SUPPRESSION 10.3V 8UMAX

[Maxim Integrated](#)

RFQ



**MAX3003EBP-T**

in stock

[MAXIM](#)

RFQ



**MAX30034CUA+T**

IC SURGE SUPPRESSION 10.3V 8UMAX

[Maxim Integrated](#)

RFQ



**MAX3003**

in stock

[MAXIM](#)

RFQ



**MAX30031CTA+T**

IC SURGE SUPPRESSION 10.3V 8UMAX

[Maxim Integrated](#)

RFQ



**MAX30034EVKIT#**

EVAL BOARD FOR MAX30034

[Maxim Integrated](#)

RFQ



**MAX30034CUA+**

IC SURGE SUPPRESSION 10.3V 8UMAX

[Maxim Integrated](#)

RFQ



**MAX3002EUP+**

IC TRANSLATOR LEVEL 8CH 20TSSOP

[Maxim Integrated](#)

RFQ



**MAX3002EUP+T**

IC TRANSLATOR LEVEL 8CH 20TSSOP

[Maxim Integrated](#)

RFQ

Guess You May Looking For



**VTVS17GSMF-M3-08**

TVS DIODE 16.9VWM 28VC SMF

[Vishay Semiconductor Diodes Division](#)

RFQ

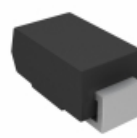


**P6SMB30C**

TVS DIODE 25.6VWM 43.47VC SMD

[Littelfuse Inc.](#)

RFQ



**SMA5J13AHE3/61**

TVS DIODE 13VWM 21.5VC SMA

[Vishay Semiconductor Diodes Division](#)

RFQ



**SMBG20A-M3/5B**

TVS DIODE 20VWM 32.4VC DO-215AA

[Vishay Semiconductor Diodes Division](#)

RFQ



**SM15T18A-M3/9AT**

TVS DIODE 15.3VWM 25.2VC DO-214A

[Vishay Semiconductor Diodes Division](#)

RFQ



**P6SMB20CA-M3/5B**

TVS DIODE 17.1VWM 27.7VC DO-214A

[Vishay Semiconductor Diodes Division](#)

RFQ



**SMBJ70AHE3/52**

TVS DIODE 70VWM 113VC SMB

[Vishay Semiconductor Diodes Division](#)

RFQ



**SMCJ17C**

TVS DIODE 17VWM 28.98VC SMC

[Littelfuse Inc.](#)

RFQ



**SMBG10A-M3/5B**

TVS DIODE 10VWM 17VC DO-215AA

[Vishay Semiconductor Diodes Division](#)

RFQ



**SMBJ350A**

TVS DIODE 350VWM 567VC DO214AA

[Bourns Inc.](#)

RFQ