

LA6586FA-BH



[AMI Semiconductor / ON Semiconductor](#)

IC MOTOR DRIVER ON/OFF 10MICRO

Lead free / RoHS Compliant

Integrated Circuits (ICs)

[PDF LA6586FA-BH.pdf](#)

Buy Now

We can supply AMI Semiconductor / ON Semiconductor LA6586FA-BH, use the request quote form to request LA6586FA-BH price, AMI Semiconductor / ON Semiconductor Datasheet PDF and lead time. Zeanoit.com is a professional electronic components distributor. With 3+ Million line items of available electronic components can ship in short lead-time, over 250 thousand part numbers of electronic components in stock for immediately delivery, which may include part number LA6586FA-BH. The price and lead time for LA6586FA-BH depending on the quantity required, availability and warehouse location.

Out Stock

0 pcs

Minimum:1

Multiples:100

Manufacturer lead time 10 weeks

Shopping Process

1

Confirm the product

2

submit the order

3

payment

4

wait for delivery

5

receive the goods

Specifications

Voltage - Supply:	2.2 V ~ 14 V
Voltage - Load:	2.2 V ~ 14 V
Technology:	Bipolar
Supplier Device Package:	10-Micro
Series:	-
Rds On (Typ):	-
Packaging:	Tape & Reel (TR)
Package / Case:	10-TFSOP, 10-MSOP (0.118", 3.00mm Width)
Output Configuration:	Half Bridge (2)
Operating Temperature:	-30°C ~ 90°C (TA)
Mounting Type:	Surface Mount
Load Type:	Inductive
Interface:	Logic
Features:	Auto Restart
Fault Protection:	Over Temperature
Current - Peak Output:	-
Current - Output / Channel:	600mA
Applications:	DC Motors, General Purpose

Related products



LA6588M-H

[SANYO](#)

RFQ



LA6585T-TLM-H

[SANYO](#)

RFQ



LA6586FA-AH

IC MOTOR DRIVER ON/OFF 10MICRO
[ON Semiconductor](#)

RFQ



LA6586T-TLM-E

[SANYOPb-f](#)

RFQ



LA6586CL-TLM-E

[SANYO](#)

RFQ



LA6587FA-BH

IC MOTOR DRIVER ON/OFF 10MICRO
[ON Semiconductor](#)

RFQ



LA6587T-TLM-E

[SANYO](#)

RFQ



LA6585TFA-BH

IC BRIDGE DRIVER ON/OFF 8MSOP
[ON Semiconductor](#)

RFQ



LA6588M

[SANYO](#)

RFQ



LA6585T-TLM-E

[SANYO](#)

RFQ

Guess You May Looking For



RNCF1210DTE1M54

RES SMD 1.54M OHM 0.5% 1/4W 1210
[Stackpole Electronics Inc.](#)

RFQ



RNCF1210DTE41K2

RES SMD 41.2K OHM 0.5% 1/3W 1210
[Stackpole Electronics Inc.](#)

RFQ



RG1005N-1740-D-T10

RES SMD 174 OHM 0.5% 1/16W 0402
[Susumu](#)

RFQ



RNCF2010BTC360R

RES SMD 360 OHM 0.1% 1/3W 2010
[Stackpole Electronics Inc.](#)

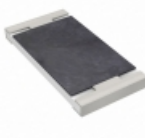
RFQ



CSRN2512FK82L0

RES SMD 0.082 OHM 1% 2W 2512
[Stackpole Electronics Inc.](#)

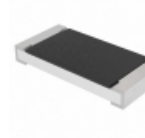
RFQ



RL2512FK-070R035L

RES SMD 0.035 OHM 1% 1W 2512
[Yageo](#)

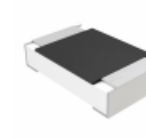
RFQ



CRCW2010464KFKEFHP

RES SMD 464K OHM 1% 1W 2010
[Vishay Dale](#)

RFQ



MCU08050D9310BP500

RES SMD 931 OHM 0.1% 1/8W 0805
[Vishay Beyschlag](#)

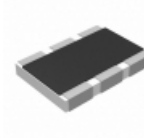
RFQ



RNCF1210DTE174R

RES SMD 174 OHM 0.5% 1/3W 1210
[Stackpole Electronics Inc.](#)

RFQ



AA1218FK-0795R3L

RES SMD 95.3 OHM 1W 1812 WIDE
[Yageo](#)

RFQ

