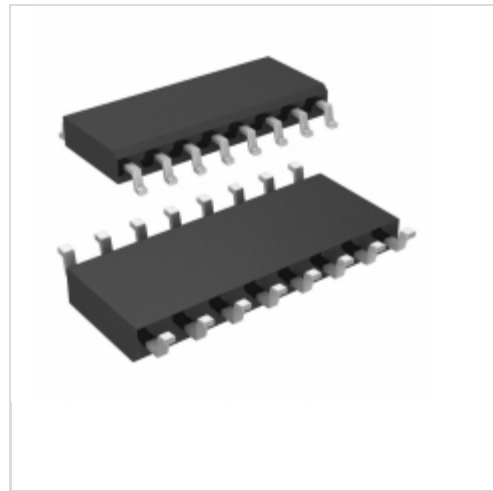


**LTC1472CS#PBF**



[Linear Technology / Analog Devices](#)

IC SWITCHNG MATRIX PCMCIA 16SOIC

Lead free / RoHS Compliant

Integrated Circuits (ICs)

[LTC1472CS#PBF.pdf](#)

**Buy Now**

Images are for reference only.

See Product Specifications for product details.

If you are interested to buy LTC1472CS#PBF,Just Email us.

Sales@zeanoit.com

our sales team will reply you within 24 hours

**In Stock**

**888 pcs**

Minimum:1

Multiples:100

Manufacturer lead time 10 weeks

**PRICE**

1 pcs	\$6.28
25 pcs	\$4.17
100 pcs	\$3.55

**Shopping Process**

**1**

**Confirm the product**

**2**

**submit the order**

**3**

**payment**

**4**

**wait for delivery**

**5**

**receive the goods**

**Specifications**

<b>Voltage - Supply (Vcc/Vdd):</b>	4.5 V ~ 5.5 V
<b>Voltage - Load:</b>	0 V ~ 12.6 V
<b>Switch Type:</b>	PCMCIA Switch
<b>Supplier Device Package:</b>	16-SOIC
<b>Series:</b>	-
<b>Rds On (Typ):</b>	140 mOhm
<b>Ratio - Input:Output:</b>	2:1
<b>Packaging:</b>	Tube
<b>Package / Case:</b>	16-SOIC (0.154", 3.90mm Width)
<b>Output Type:</b>	-
<b>Output Configuration:</b>	High Side
<b>Operating Temperature:</b>	0°C ~ 70°C (TA)
<b>Number of Outputs:</b>	2
<b>Interface:</b>	On/Off
<b>Input Type:</b>	-
<b>Features:</b>	Slew Rate Controlled
<b>Fault Protection:</b>	Current Limiting (Fixed), Over Temperature
<b>Current - Output (Max):</b>	1A

**Related products**



**LTC1471CS#TR**

[LT](#)

**RFQ**



**LTC1473CGN#TRPBF**

IC OR CTRLR SRC SELECT 16SSOP

[Linear Technology](#)

**RFQ**



**LTC1472SL**

in stock

[LINEAR](#)

**RFQ**



**LTC1473CGN#PBF**

IC OR CTRLR SRC SELECT 16SSOP

[Linear Technology](#)

**RFQ**



**LTC1471SL**

in stock

[LINEAR](#)

**RFQ**



**LTC1471CS#TRPBF**

IC SWITCH PCMCIA PROT DUAL16SOIC

[Linear Technology](#)

**RFQ**



**LTC1471CS#TR SOP16**

[LINEAR](#)

**RFQ**



**LTC1472CS**

in stock

[LINEAR](#)

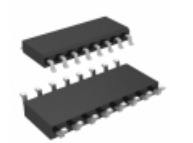
**RFQ**



**LTC1472CS#TR**

[LTC](#)

**RFQ**



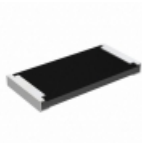
**LTC1472CS#TRPBF**

IC SWITCHNG MATRIX PCMCIA 16SOIC

[Linear Technology](#)

**RFQ**

**Guess You May Looking For**



**RCP2512B51R0JS2**

RES SMD 51 OHM 5% 22W 2512

[Vishay Dale](#)

**RFQ**

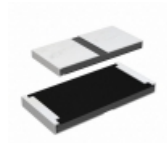


**Y14880R00630F9R**

RES SMD 0.0063 OHM 1% 3W 3637

[Vishay Foil Resistors \(Division of Vishay Precisio](#)

**RFQ**

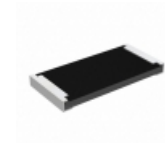


**RCP2512W430RGWB**

RES SMD 430 OHM 2% 22W 2512

[Vishay Dale](#)

**RFQ**

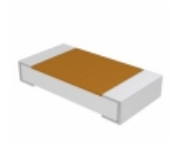


**RCP2512B220RGWB**

RES SMD 220 OHM 2% 22W 2512

[Vishay Dale](#)

**RFQ**

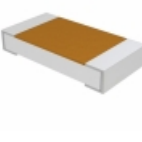


**D55342E07B1E62CWS**

RES SMD 1.62K OHM 1% 1/4W 1206

[Vishay Dale](#)

**RFQ**



**D55342H07B942BRWS**

RES SMD 942K OHM 0.1% 1/4W 1206

[Vishay Dale](#)

**RFQ**

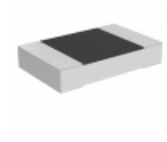


**M55342E12B11B5RWS**

RES SMD 11.5KOHM 0.1% 1/10W 0603

[Vishay Dale](#)

**RFQ**

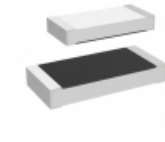


**PLTT0805Z7151QGT5**

RES SMD 7.15KOHM 0.02% 1/4W 0805

[Vishay Thin Film](#)

**RFQ**

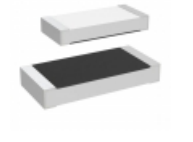


**M55342H08B2E74RWS**

RES SMD 2.74K OHM 1% 0.8W 2010

[Vishay Dale](#)

**RFQ**



**M55342K08B20D0PTSV**

RES SMD 20 OHM 1% 0.8W 2010

[Vishay Dale](#)

**RFQ**

