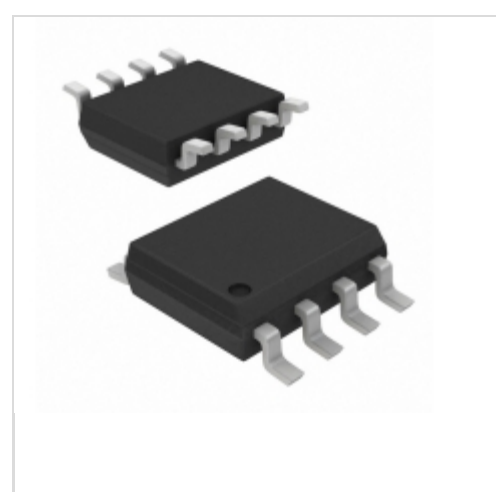


FAN7190MX_F085



Fairchild/ON Semiconductor

IC GATE DVR HI/LOW SIDE 8SOIC

Lead free / RoHS Compliant

Integrated Circuits (ICs)

[FAN7190MX_F085.pdf](#)

Buy Now

Images are for reference only.

See Product Specifications for product details.

If you are interested to buy FAN7190MX_F085, Just Email us.

Sales@zeanoit.com

our sales team will reply you within 24 hours

Out Stock

0 pcs

Minimum: 1

Multiples: 100

Manufacturer lead time 10 weeks

PRICE

2500 pcs	\$0.784
5000 pcs	\$0.755
12500 pcs	\$0.726

Shopping Process

1

Confirm the product

2

submit the order

3

payment

4

wait for delivery

5

receive the goods

Specifications

Voltage - Supply:	10 V ~ 22 V
Supplier Device Package:	8-SOIC
Series:	Automotive, AEC-Q100
Rise / Fall Time (Typ):	25ns, 20ns
Packaging:	Tape & Reel (TR)
Package / Case:	8-SOIC (0.154", 3.90mm Width)
Operating Temperature:	-40°C ~ 150°C (TJ)
Number of Drivers:	2
Mounting Type:	Surface Mount
Logic Voltage - VIL, VIH:	1.2V, 2.5V
Input Type:	Non-Inverting
High Side Voltage - Max (Bootstrap):	600V
Gate Type:	IGBT, N-Channel MOSFET
Driven Configuration:	Half-Bridge
Current - Peak Output (Source, Sink):	4.5A, 4.5A
Channel Type:	Independent

Related products



FAN7191

in stock

[FAIRCHILD](#)

RFQ



FAN7190MX

IC GATE DVR HI/LOW SIDE 8-SOIC

[Fairchild/ON Semiconductor](#)

RFQ



FAN7171M_F085

IC GATE DVR HIGH SIDE 8-SOIC

[Fairchild/ON Semiconductor](#)

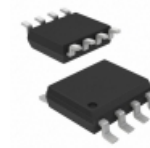
RFQ



FAN7191MX

[FAIRCHILD](#)

RFQ



FAN7190M_F085

IC GATE DVR HI/LOW SIDE 8-SOIC

[Fairchild/ON Semiconductor](#)

RFQ



FAN7190M

IC GATE DVR HI/LOW SIDE 8-SOIC

[Fairchild/ON Semiconductor](#)

RFQ



FAN7191MX.

[FAIRCHILD](#)

RFQ



FAN7171MX_F085

IC GATE DVR HIGH SIDE 8-SOIC

[Fairchild/ON Semiconductor](#)

RFQ



FAN7300G

IC CTRLR LCD BACK LT INV 20SSOP

[Fairchild/ON Semiconductor](#)

RFQ



FAN7171MX.

[FAIECHILD](#)

RFQ

Guess You May Looking For

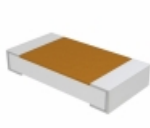


RT1206CRB077K68L

RES SMD 7.68KOHM 0.25% 1/4W 1206

[Yageo](#)

RFQ

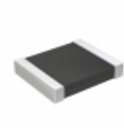


RCWE0402R820FKEA

RES SMD 0.82 OHM 1% 1/8W 0402

[Vishay Dale](#)

RFQ

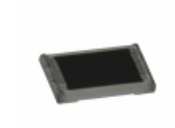


RT1210CRE07324KL

RES SMD 324K OHM 0.25% 1/4W 1210

[Yageo](#)

RFQ

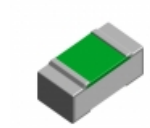


ERA-3ARB1241V

RES SMD 1.24KOHM 0.1% 1/10W 0603

[Panasonic Electronic Components](#)

RFQ

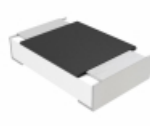


ERA-2HRC2700X

RES SMD 270 OHM 0.25% 1/16W 0402

[Panasonic Electronic Components](#)

RFQ

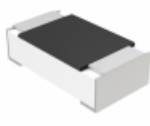


MCU08050D7872BP100

RES SMD 78.7K OHM 0.1% 1/8W 0805

[Vishay Beyschlag](#)

RFQ



MCT06030D2802BP100

RES SMD 28K OHM 0.1% 1/10W 0603

[Vishay Beyschlag](#)

RFQ

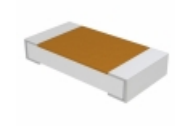


RG1608P-1403-W-T1

RES SMD 140KOHM 0.05% 1/10W 0603

[Susumu](#)

RFQ



RCWE080562L0FKEA

RES SMD 0.062 OHM 1% 1/4W 0805

[Vishay Dale](#)

RFQ



RT0805WRE07619RL

RES SMD 619 OHM 0.05% 1/8W 0805

[Yageo](#)

RFQ