

CDBFR0520L



[Comchip Technology](#)

DIODE SCHOTTKY 20V 500MA 1005
Lead free / RoHS Compliant
Discrete Semiconductor Products

[CDBFR0520L.pdf](#)

Buy Now

Out Stock

0 pcs

Minimum:1

Multiples:100

Manufacturer lead time 10 weeks

Images are for reference only.

See Product Specifications for product details.

If you are interested to buy CDBFR0520L,Just Email us.

Sales@zeanoit.com

our sales team will reply you within 24 hours

Shopping Process

1

Confirm the product

2

submit the order

3

payment

4

wait for delivery

5

receive the goods

Specifications

Voltage - Forward (Vf) (Max) @ If:	385mV @ 500mA
Voltage - DC Reverse (Vr) (Max):	20V
Supplier Device Package:	1005/SOD-323F
Speed:	Fast Recovery = 200mA (Io)
Series:	-
Reverse Recovery Time (trr):	22ns
Packaging:	Tape & Reel (TR)
Package / Case:	1005 (2512 Metric)
Operating Temperature - Junction:	125°C (Max)
Mounting Type:	Surface Mount
Diode Type:	Schottky
Current - Reverse Leakage @ Vr:	250µA @ 20V
Current - Average Rectified (Io):	500mA
Capacitance @ Vr, F:	170pF @ 0V, 1MHz

Related products



CDBFR03100-HF

DIODE SCHOTTKY 100V 300MA 1005

[Comchip Technology](#)

RFQ



CDBFR42

DIODE SCHOTTKY 30V 200MA 1005

[Comchip Technology](#)

RFQ



CDBFR0320

DIODE SCHOTTKY 20V 350MA 1005

[Comchip Technology](#)

RFQ



CDBFR0520

DIODE SCHOTTKY 20V 500MA 1005

[Comchip Technology](#)

RFQ



CDBFR0340

DIODE SCHOTTKY 40V 350MA 1005

[Comchip Technology](#)

RFQ



CDBFR0330

DIODE SCHOTTKY 30V 350MA 1005

[Comchip Technology](#)

RFQ



CDBFR0540

DIODE SCHOTTKY 40V 500MA 1005

[Comchip Technology](#)

RFQ



CDBFR54

DIODE SCHOTTKY 30V 200MA 1005

[Comchip Technology](#)

RFQ



CDBFR43

DIODE SCHOTTKY 30V 200MA 1005

[Comchip Technology](#)

RFQ



CDBFR40

DIODE SCHOTTKY 40V 200MA 1005

[Comchip Technology](#)

RFQ

Guess You May Looking For



SIT1602BC-83-33N-12.000000Y

-20 TO 70C, 7050, 50PPM, 3.3V, 1

[SITIME](#)

RFQ



SIT1602BI-23-XXS-7.372800E

-40 TO 85C, 3225, 50PPM, 2.25V-3

[SITIME](#)

RFQ



SIT1602BI-71-30S-27.000000D

-40 TO 85C, 2016, 20PPM, 3.0V, 2

[SITIME](#)

RFQ



SIT8008AC-33-33S-12.288000Y

OSC MEMS 12.2880MHZ LVCMS SMD

[SITIME](#)

RFQ



SIT1602BI-71-18S-25.000000E

-40 TO 85C, 2016, 20PPM, 1.8V, 2

[SITIME](#)

RFQ



SIT1602BC-81-18E-33.333330T

-20 TO 70C, 7050, 20PPM, 1.8V, 3

[SITIME](#)

RFQ



SIT1602BI-22-33N-65.000000D

-40 TO 85C, 3225, 25PPM, 3.3V, 6

[SITIME](#)

RFQ



SIT1602BI-22-33N-28.636300D

-40 TO 85C, 3225, 25PPM, 3.3V, 2

[SITIME](#)

RFQ

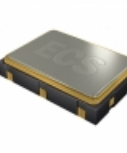


SIT1602BC-31-18E-27.000000Y

-20 TO 70C, 5032, 20PPM, 1.8V, 2

[SITIME](#)

RFQ



ECS-3225S30-250-FN-TR

OSC XO 25.0MHZ 3.0V HCMOS SMD

[ECS Inc.](#)

RFQ