

**UC2708DWG4**


N/A  
 IC DUAL NON-INV PWR DRVR 16SOIC  
 Lead free / RoHS Compliant  
 Integrated Circuits (ICs)

**Buy Now**

We can supply UC2708DWG4, use the request quote form to request UC2708DWG4 price and lead time. Zeano is a professional electronic components distributor. With 3+ Million line items of available electronic components can ship in short lead-time, over 250 thousand part numbers of electronic components in stock for immediately delivery, which may include part number UC2708DWG4. The price and lead time for UC2708DWG4 depending on the quantity required and warehouse location. Contact us and our sales representative will provide you price. We look forward to work with you.

**Out Stock**
**0 pcs**

Minimum:1

Multiples:1

Manufacturer lead time 10 weeks

## Shopping Process


**Confirm the product**

**submit the order**

**payment**

**wait for delivery**

**receive the goods**

## Specifications

<b>Voltage - Supply:</b>	5 V ~ 35 V
<b>Supplier Device Package:</b>	16-SOIC
<b>Series:</b>	-
<b>Rise / Fall Time (Typ):</b>	25ns, 25ns
<b>Packaging:</b>	Tube
<b>Package / Case:</b>	16-SOIC (0.295", 7.50mm Width)
<b>Operating Temperature:</b>	-25°C ~ 85°C (TA)
<b>Number of Drivers:</b>	2
<b>Mounting Type:</b>	Surface Mount
<b>Logic Voltage - VIL, VIH:</b>	0.8V, 2V
<b>Input Type:</b>	Non-Inverting
<b>Gate Type:</b>	N-Channel, P-Channel MOSFET
<b>Driven Configuration:</b>	Low-Side
<b>Current - Peak Output (Source, Sink):</b>	3A, 3A
<b>Channel Type:</b>	Independent

## Related products


**UC2707N**

IC COMPLEMENTARY PWR DRVR 16-DIP

N/A

RFQ


**UC2708DWTR**

IC DUAL NON-INV PWR DRVR 16SOIC

N/A

RFQ


**UC2708NEG4**

IC DUAL NON-INV PWR DRVR 16DIP

N/A

RFQ


**UC2707NG4**

IC COMPLEMENTARY PWR DRVR 16-DIP

N/A

RFQ


**UC2708DWTRG4**

IC DUAL NON-INV PWR DRVR 16SOIC

N/A

RFQ


**UC2707DWTRG4**

IC DUAL CHAN PWR DRIVER 16-SOIC

N/A

RFQ


**UC2708NE**

IC DUAL NON-INV PWR DRVR 16DIP

N/A

RFQ


**UC2708N**

IC DUAL NON-INV PWR DRVR 8DIP

N/A

RFQ


**UC2708DW**

IC DUAL NON-INV PWR DRVR 16-SOIC

N/A

RFQ

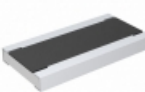

**UC2707Q**

IC DUAL CHAN POWER DRIVER 20PLCC

N/A

RFQ

## Guess You May Looking For


**RCWE0612R931FKEA**

RES SMD 0.931 OHM 1% 1W 0612

[Vishay Dale](#)

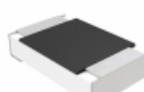
RFQ


**RG1608P-3401-W-T5**

RES SMD 3.4KOHM 0.05% 1/10W 0603

[Susumu](#)

RFQ


**MCU08050D1960BP100**

RES SMD 196 OHM 0.1% 1/8W 0805

[Vishay Beyschlag](#)

RFQ


**RG2012P-304-W-T5**

RES SMD 300K OHM 0.05% 1/8W 0805

[Susumu](#)

RFQ


**RNCF1210BKE475R**

RES SMD 475 OHM 0.1% 1/3W 1210

[Stackpole Electronics Inc.](#)

RFQ


**RNCF1210BKE100K**

RES SMD 100K OHM 0.1% 1/3W 1210

[Stackpole Electronics Inc.](#)

RFQ


**RT0805WRD07715RL**

RES SMD 715 OHM 0.05% 1/8W 0805

[Yageo](#)

RFQ


**RT0805WRD07604RL**

RES SMD 604 OHM 0.05% 1/8W 0805

[Yageo](#)

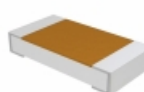
RFQ


**RNCF2512BTE910R**

RES SMD 910 OHM 0.1% 3/4W 2512

[Stackpole Electronics Inc.](#)

RFQ


**TNPW12064K87BETA**

RES SMD 4.87K OHM 0.1% 1/4W 1206

[Vishay Dale](#)

RFQ