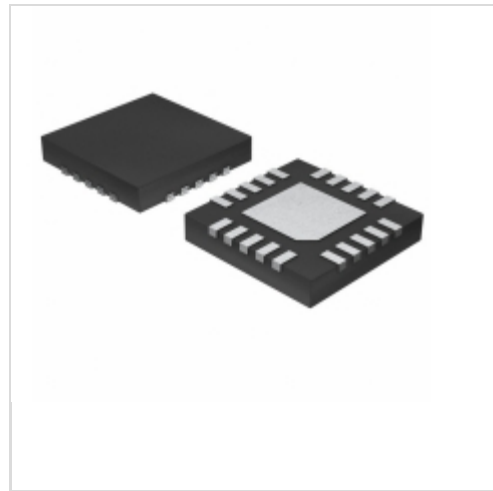


**MAX6792TPWD2+**



**Maxim Integrated**

IC REG LIN W/SPR VSR 20-TQFN  
Lead free / RoHS Compliant  
Integrated Circuits (ICs)

- [1.MAX6792TPWD2+.pdf](#)
- [2.MAX6792TPWD2+.pdf](#)

**Buy Now**

**Out Stock**

**0 pcs**

Minimum:1

Multiples:100

Manufacturer lead time 10 weeks

Images are for reference only.

See Product Specifications for product details.

If you are interested to buy MAX6792TPWD2+,Just Email us.

Sales@zeanoit.com

our sales team will reply you within 24 hours

Shopping Process

**1**

**Confirm the product**

**2**

**submit the order**

**3**

**payment**

**4**

**wait for delivery**

**5**

**receive the goods**

Specifications

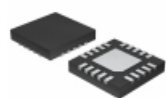
|                                      |                       |
|--------------------------------------|-----------------------|
| <b>Voltage - Threshold:</b>          | 1.665V, Adj           |
| <b>Type:</b>                         | Regulator/Supervisor  |
| <b>Supplier Device Package:</b>      | 20-TQFN-EP (5x5)      |
| <b>Series:</b>                       | -                     |
| <b>Reset Timeout:</b>                | 8.75 ms Minimum       |
| <b>Reset:</b>                        | Active Low            |
| <b>Packaging:</b>                    | Tube                  |
| <b>Package / Case:</b>               | 20-WQFN Exposed Pad   |
| <b>Output:</b>                       | Push-Pull, Totem Pole |
| <b>Operating Temperature:</b>        | -40°C ~ 125°C (TA)    |
| <b>Number of Voltages Monitored:</b> | 2                     |
| <b>Mounting Type:</b>                | Surface Mount         |

Related products



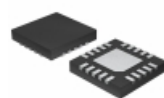
**MAX6793PLD3**  
[MAXIM](#)

**RFQ**



**MAX6792TPSD1+**  
IC REG LIN W/SPR VSR 20-TQFN  
[Maxim Integrated](#)

**RFQ**



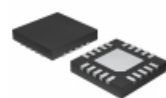
**MAX6792TPSD2+**  
IC REG LIN W/SPR VSR 20-TQFN  
[Maxim Integrated](#)

**RFQ**



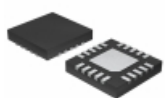
**MAX6793PSD+T**  
in stock  
[MAXIM](#)

**RFQ**



**MAX6792TPLD2+**  
IC REG LIN W/SPR VSR 20-TQFN  
[Maxim Integrated](#)

**RFQ**



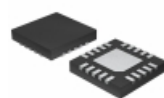
**MAX6792TPSD2+T**  
IC REG LINEAR DUAL 20-TQFN  
[Maxim Integrated](#)

**RFQ**



**MAX6793P**  
in stock  
[MAXIM](#)

**RFQ**



**MAX6792TPLD2+T**  
IC REG LINEAR DUAL 20-TQFN  
[Maxim Integrated](#)

**RFQ**



**MAX6793TP**  
in stock  
[MAXIM](#)

**RFQ**



**MAX6793PL**  
in stock  
[MAXIM](#)

**RFQ**

Guess You May Looking For



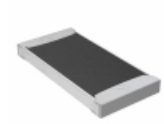
**9T08052A1272FBHFT**  
RES SMD 12.7K OHM 1% 1/8W 0805  
[Yageo](#)

**RFQ**



**RG1005P-8250-B-T1**  
RES SMD 825 OHM 0.1% 1/16W 0402  
[Susumu](#)

**RFQ**



**TNPW251247R5BEEY**  
RES SMD 47.5 OHM 0.1% 1/2W 2512  
[Vishay Dale](#)

**RFQ**



**MPMT1003CT1**  
RES NTWRK 2 RES 50K OHM T0236-3  
[Vishay Thin Film](#)

**RFQ**



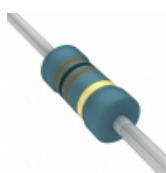
**CMF5556K200FHEB**  
RES 56.2K OHM 1/2W 1% AXIAL  
[Vishay Dale](#)

**RFQ**



**RNMF14FTD107K**  
RES 107K OHM 1/4W 1% AXIAL  
[Stackpole Electronics Inc.](#)

**RFQ**



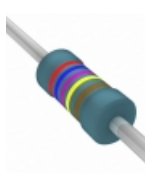
**SFR25H0001000JR500**  
RES 100 OHM 1/2W 5% AXIAL  
[Vishay BC Components](#)

**RFQ**



**RSMF12JB51R0**  
RES 510HM 1/2W 5% AXIAL  
[Stackpole Electronics Inc.](#)

**RFQ**



**MBB02070C2679FCT00**  
RES 26.7 OHM 0.6W 1% AXIAL  
[Vishay BC Components](#)

**RFQ**



**EP3WS1K0J**  
RES 1K OHM 3W 5% AXIAL  
[TE Connectivity Passive Product](#)

**RFQ**