

## LTC3900MPS8#TRPBF



Linear Technology / Analog Devices

IC DRIVER RECT SYNC CONV 8SOIC

Lead free / RoHS Compliant

Integrated Circuits (ICs)

[LTC3900MPS8#TRPBF.pdf](#)

**Buy Now**

**Out Stock**

**0 pcs**

Minimum:1

Multiples:100

Manufacturer lead time 10 weeks

part#LTC3900MPS8#TRPBF is available, see description of LTC3900MPS8#TRPBF as below .

use the request quote form to request LTC3900MPS8#TRPBF price and lead time.

Buy Electronic Components at zeanoit.com .we are an independent distributor of electronic components with extensive inventory in stock.

The price and lead time for LTC3900MPS8#TRPBF depending on the quantity required, availability and warehouse location.Contact us today and our sales team will send you quotation soon.

Email: sales@zeanoit.com

### Shopping Process

**1**

**Confirm the product**

**2**

**submit the order**

**3**

**payment**

**4**

**wait for delivery**

**5**

**receive the goods**

### Specifications

<b>Voltage - Supply:</b>	4.5 V ~ 11 V
<b>Supplier Device Package:</b>	8-SO
<b>Series:</b>	-
<b>Rise / Fall Time (Typ):</b>	15ns, 15ns
<b>Packaging:</b>	Tape & Reel (TR)
<b>Package / Case:</b>	8-SOIC (0.154", 3.90mm Width)
<b>Operating Temperature:</b>	-55°C ~ 150°C (TJ)
<b>Number of Drivers:</b>	2
<b>Mounting Type:</b>	Surface Mount
<b>Logic Voltage - VIL, VIH:</b>	-
<b>Input Type:</b>	Inverting, Non-Inverting
<b>Gate Type:</b>	N-Channel MOSFET
<b>Driven Configuration:</b>	Low-Side
<b>Current - Peak Output (Source, Sink):</b>	2A, 2A
<b>Channel Type:</b>	Synchronous

### Related products



**LTC3900IS8#TRPBF**

IC DRVR SYNC RECTIFIER 8-SOIC

[Linear Technology](#)

**RFQ**



**LTC3988EMSE#TRPBF**

[LINEAR](#)

**RFQ**



**LTC3988EMSE**

[LT](#)

**RFQ**



**LTC3901EGN#TRPBF**

IC DRIVER RECT SYNC CONV 16SSOP

[Linear Technology](#)

**RFQ**



**LTC3900MPS8#PBF**

IC DRIVER RECT SYNC CONV 8SOIC

[Linear Technology](#)

**RFQ**



**LTC3900IS8#PBF**

IC DRVR SYNC RECTIFIER 8-SOIC

[Linear Technology](#)

**RFQ**



**LTC3950CDDB-2#TRPBF**

in stock

[LINEAR](#)

**RFQ**



**LTC3901EGN#PBF**

IC DRIVER RECT SYNC CONV 16SSOP

[Linear Technology](#)

**RFQ**



**LTC3900HS8#TRPBF**

IC DRIVER RECT SYNC CONV 8SOIC

[Linear Technology](#)

**RFQ**



**LTC3900HS8#PBF**

IC DRIVER RECT SYNC CONV 8SOIC

[Linear Technology](#)

**RFQ**

### Guess You May Looking For

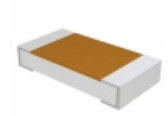


**RT1206CRB07825KL**

RES SMD 825K OHM 0.25% 1/4W 1206

[Yageo](#)

**RFQ**



**RCWE0805R562FKEA**

RES SMD 0.562 OHM 1% 1/4W 0805

[Vishay Dale](#)

**RFQ**

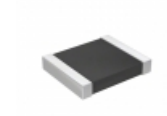


**RG1608P-1470-W-T5**

RES SMD 147 OHM 0.05% 1/10W 0603

[Susumu](#)

**RFQ**



**RT1210CRD0740K2L**

RES SMD 40.2KOHM 0.25% 1/4W 1210

[Yageo](#)

**RFQ**



**RNCF1210BKE22K0**

RES SMD 22K OHM 0.1% 1/3W 1210

[Stackpole Electronics Inc.](#)

**RFQ**

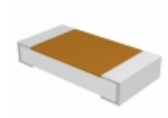


**RG2012P-8452-W-T5**

RES SMD 84.5KOHM 0.05% 1/8W 0805

[Susumu](#)

**RFQ**

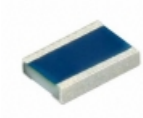


**TNPW1206499RBEEA**

RES SMD 499 OHM 0.1% 1/4W 1206

[Vishay Dale](#)

**RFQ**



**MCW0406MD4871BP100**

RES SMD 4.87K OHM 1/4W 0604 WIDE

[Vishay Beyschlag](#)

**RFQ**



**RNCF2512BKE28R7**

RES SMD 28.7 OHM 0.1% 1W 2512

[Stackpole Electronics Inc.](#)

**RFQ**



**RNCF2512BKE20K5**

RES SMD 20.5K OHM 0.1% 1/2W 2512

[Stackpole Electronics Inc.](#)

**RFQ**