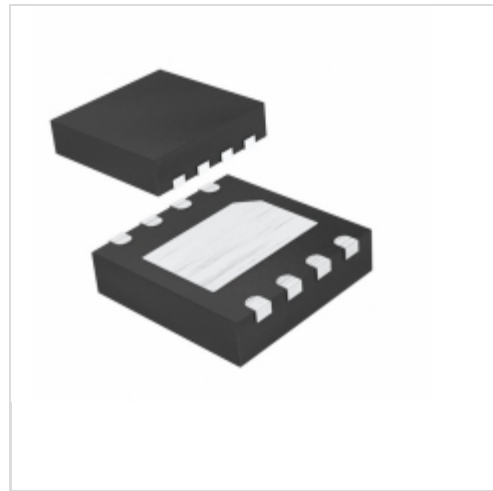


MAX8596ZETA+T



Maxim Integrated

IC LED DRVR RGLTR DIM 25MA 8TDFN

Lead free / RoHS Compliant

Integrated Circuits (ICs)

1.MAX8596ZETA+T.pdf

2.MAX8596ZETA+T.pdf

Buy Now

Out Stock

0 pcs

Minimum:1

Multiples:100

Manufacturer lead time 10 weeks

part#MAX8596ZETA+T is available, see description of MAX8596ZETA+T as below .

use the request quote form to request MAX8596ZETA+T price and lead time.

Buy Electronic Components at zeanoit.com .we are an independent distributor of electronic components with extensive inventory in stock.

The price and lead time for MAX8596ZETA+T depending on the quantity required, availability and warehouse location.Contact us today and our sales team will send you quotation soon.

Email: sales@zeanoit.com

Shopping Process

1

Confirm the product

2

submit the order

3

payment

4

wait for delivery

5

receive the goods

Specifications

Voltage - Supply (Min):	2.6V
Voltage - Supply (Max):	5.5V
Voltage - Output:	32V
Type:	DC DC Regulator
Topology:	Step-Up (Boost)
Supplier Device Package:	8-TDFN-EP (3x3)
Series:	-
Packaging:	Tape & Reel (TR)
Package / Case:	8-WDFN Exposed Pad
Operating Temperature:	-40°C ~ 85°C (TA)
Number of Outputs:	1
Mounting Type:	Surface Mount
Internal Switch(s):	Yes
Frequency:	1MHz
Dimming:	Analog, PWM
Current - Output / Channel:	25mA
Applications:	Backlight

Related products



MAX8596XETA

in stock

[MAXIM](#)

RFQ

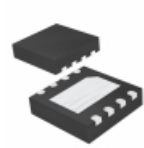


MAX8597

in stock

[MAXIM](#)

RFQ

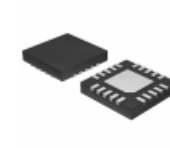


MAX8596XETA+

IC LED DRVR RGLTR DIM 25MA 8TDFN

[Maxim Integrated](#)

RFQ



MAX8597ETP+T

IC REG CTRLR BUCK 20-TQFN

[Maxim Integrated](#)

RFQ

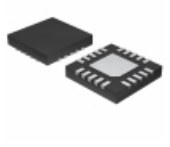


MAX8598ETE

in stock

[MAXIM](#)

RFQ



MAX8597ETP+

IC REG CTRLR BUCK 20-TQFN

[Maxim Integrated](#)

RFQ

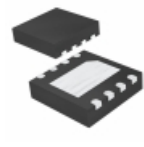


MAX8596ZETA

in stock

[MAXIM](#)

RFQ



MAX8596XETA+T

IC LED DRVR RGLTR DIM 25MA 8TDFN

[Maxim Integrated](#)

RFQ



MAX8597ETP

in stock

[MAXIM](#)

RFQ



MAX8596ZETA+

IC LED DRVR RGLTR DIM 25MA 8TDFN

[Maxim Integrated](#)

RFQ

Guess You May Looking For

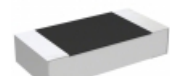


RHC2512FTR680

RES SMD 0.68 OHM 1% 2W 2512

[Stackpole Electronics Inc.](#)

RFQ



RP73D2B6R49BTDF

RES SMD 6.49 OHM 0.1% 1/4W 1206

[TE Connectivity Passive Product](#)

RFQ



TNPW080522K6BEEN

RES SMD 22.6K OHM 0.1% 1/8W 0805

[Vishay Dale](#)

RFQ



RN73C1E2K67BTDF

RES SMD 2.67KOHM 0.1% 1/16W 0402

[TE Connectivity Passive Product](#)

RFQ



RHC2512FT5K11

RES SMD 5.11K OHM 1% 2W 2512

[Stackpole Electronics Inc.](#)

RFQ



RHC2512FT38K3

RES SMD 38.3K OHM 1% 2W 2512

[Stackpole Electronics Inc.](#)

RFQ



HRG3216P-1542-B-T1

RES SMD 15.4K OHM 0.1% 1W 1206

[Susumu](#)

RFQ

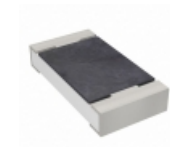


SM6227FT3R32

RES SMD 3.32 OHM 1% 3W 6227

[Stackpole Electronics Inc.](#)

RFQ

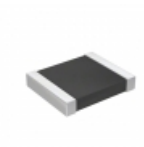


RT1206WRD0717K4L

RES SMD 17.4KOHM 0.05% 1/4W 1206

[Yageo](#)

RFQ



RT1210WRB0751KL

RES SMD 51K OHM 0.05% 1/4W 1210

[Yageo](#)

RFQ

