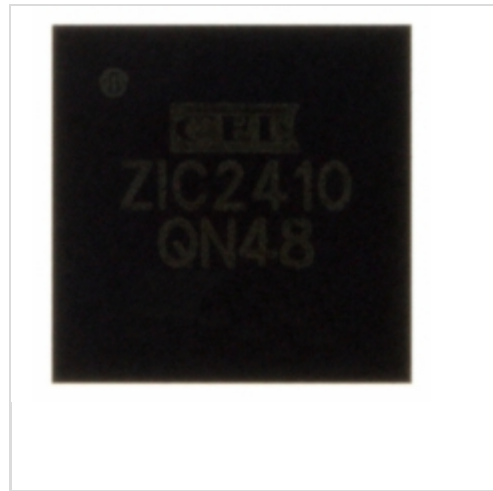


ZIC2410QN48



CEL (California Eastern Laboratories)

IC RF TXRX+MCU 802.15.4 48-VFQFN

Lead free / RoHS Compliant

RF/IF and RFID

[1.ZIC2410QN48.pdf](#)

[2.ZIC2410QN48.pdf](#)

[3.ZIC2410QN48.pdf](#)

[4.ZIC2410QN48.pdf](#)

Buy Now

part#ZIC2410QN48 is available, see description of ZIC2410QN48 as below . use the request quote form to request ZIC2410QN48 price and lead time. Buy Electronic Components at zeanoit.com .we are an independent distributor of electronic components with extensive inventory in stock. The price and lead time for ZIC2410QN48 depending on the quantity required, availability and warehouse location.Contact us today and our sales team will send you quotation soon. Email: sales@zeanoit.com

Shopping Process

1

Confirm the product

2

submit the order

3

payment

4

wait for delivery

5

receive the goods

Specifications

Voltage - Supply:	1.35 V ~ 3.3 V
Type:	TxRx + MCU
Series:	-
Serial Interfaces:	I ² S, SPI, UART
Sensitivity:	-98dBm
RF Family/Standard:	802.15.4
Protocol:	Zigbee®
Power - Output:	8dBm
Packaging:	Bulk
Package / Case:	48-VFQFN Exposed Pad
Operating Temperature:	-40°C ~ 85°C
Modulation:	O-QPSK
Memory Size:	96kB Flash, 1kB ROM, 8kB RAM
GPIO:	22
Frequency:	2.4GHz
Data Rate (Max):	1Mbps
Current - Transmitting:	33.8mA ~ 46.3mA
Current - Receiving:	4.6mA

Related products



ZICM0868P0-1CU
RF TXRX MODULE ISM<1GHZ U.FL ANT
[CEL](#)

RFQ



ZIC2410FG72
IC RF TXRX+MCU 802.15.4 72-VFBGA
[CEL](#)

RFQ



ZIC2410QN48R
IC RF TXRX+MCU 802.15.4 48-VFQFN
[CEL](#)

RFQ



ZICM-EM35X-DEV-KIT-3
RF EVAL EMBER COMPANION KIT
[CEL](#)

RFQ



ZIC2410FG72R
IC RF TXRX+MCU 802.15.4 72-VFBGA
[CEL](#)

RFQ



ZICM0900P2-1C
RF TXRX MODULE ISM<1GHZ WIRE ANT
[CEL](#)

RFQ



ZIC2411
[CEL](#)

RFQ



ZIC2410FG72T
IC RF TXRX+MCU 802.15.4 72-VFBGA
[CEL](#)

RFQ



ZIC2411QN48
IC TXRX 2.4GHZ 802.15.4 48QFN
[CEL](#)

RFQ



ZIC2410QN48T
IC RF TXRX+MCU 802.15.4 48-VFQFN
[CEL](#)

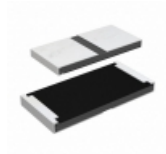
RFQ

Guess You May Looking For



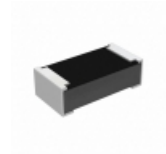
RCP0505W1K00JWB
RES SMD 1K OHM 5% 5W 0505
[Vishay Dale](#)

RFQ



RCP2512W12R0GS6
RES SMD 12 OHM 2% 22W 2512
[Vishay Dale](#)

RFQ



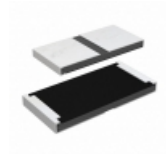
RCP0603B1K20GS6
RES SMD 1.2K OHM 2% 3.9W 0603
[Vishay Dale](#)

RFQ



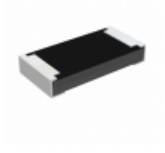
RCP0603W50R0JS6
RES SMD 50 OHM 5% 3.9W 0603
[Vishay Dale](#)

RFQ



RCP2512W470RJED
RES SMD 470 OHM 5% 22W 2512
[Vishay Dale](#)

RFQ



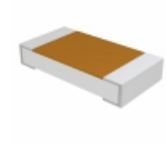
RCP1206B36R0GET
RES SMD 36 OHM 2% 11W 1206
[Vishay Dale](#)

RFQ



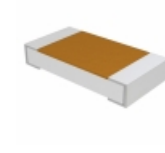
Y40454K64000B0W
RES SMD 4.64KOHM 0.1% 1/20W 0505
[Vishay Foil Resistors \(Division of Vishay Precision\)](#)

RFQ



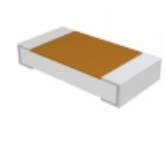
D55342E07B2E50RWS
RES SMD 2.5K OHM 1% 1/4W 1206
[Vishay Dale](#)

RFQ



D55342E07B4B42MWS
RES SMD 4.42K OHM 0.1% 1/4W 1206
[Vishay Dale](#)

RFQ



D55342H07B10B2RWS
RES SMD 10.2K OHM 0.1% 1/4W 1206
[Vishay Dale](#)

RFQ