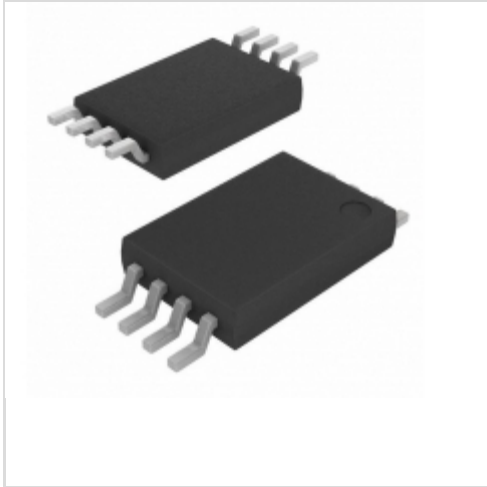


AT34C02-10TI

Microchip Technology

IC EEPROM 2KBIT 400KHZ 8TSSOP
 Contains lead / RoHS non-compliant
 Integrated Circuits (ICs)

[AT34C02-10TI.pdf](#)

Buy Now

part#AT34C02-10TI is available, see description of AT34C02-10TI as below .
 use the request quote form to request AT34C02-10TI price and lead time.
 Buy Electronic Components at zeanoit.com .we are an independent distributor of
 electronic components with extensive inventory in stock.
 The price and lead time for AT34C02-10TI depending on the quantity required,
 availability and warehouse location.Contact us today and our sales team will send you
 quotation soon.
 Email: sales@zeanoit.com

Shopping Process

1

Confirm the product

2

submit the order

3

payment

4

wait for delivery

5

receive the goods

Specifications

Voltage - Supply:	4.5 V ~ 5.5 V
Supplier Device Package:	8-TSSOP
Speed:	400kHz
Series:	-
Packaging:	Tube
Package / Case:	8-TSSOP (0.173", 4.40mm Width)
Operating Temperature:	-40°C ~ 85°C (TA)
Memory Type:	Non-Volatile
Memory Size:	2Kb (256 x 8)
Memory Format:	EEPROM
Interface:	I ² C, 2-Wire Serial

Related products


AT34C02-10TC-1.8
 IC EEPROM 2KBIT 400KHZ 8TSSOP
[Microchip Technology](#)

RFQ



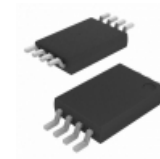
AT34C02-10TC-2.7 TSSOP8
[ATMEL](#)

RFQ



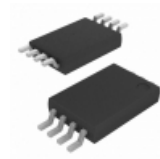
AT34C02-10TQ-2.7
 Two-wire Serial EEPROM with
 Permanent Software Write Protect
[ATMEL](#)

RFQ



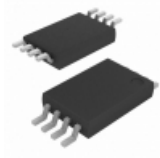
AT34C02-10TI-2.7
 IC EEPROM 2KBIT 400KHZ 8TSSOP
[Microchip Technology](#)

RFQ



AT34C02-10TI-1.8
 IC EEPROM 2KBIT 400KHZ 8TSSOP
[Microchip Technology](#)

RFQ



AT34C02-10TI-1.8-T
 IC EEPROM 2KBIT 400KHZ 8TSSOP
[Microchip Technology](#)

RFQ



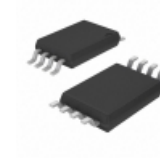
AT34C02-10TI-2.7 TSSOP8
[ATMEL](#)

RFQ



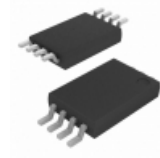
AT34C02-10TE-2.7
 Two-wire Serial EEPROM with
 Permanent Software Write Protect
[ATMEL](#)

RFQ



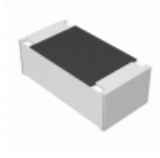
AT34C02-10TC-2.7
 in stock
[ATMEL](#)

RFQ



AT34C02-10TC-2.7
 IC EEPROM 2KBIT 400KHZ 8TSSOP
[Microchip Technology](#)

RFQ

Guess You May Looking For


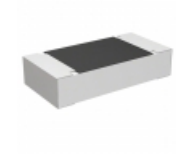
ERA-2AEB4990X
 RES SMD 499 OHM 0.1% 1/16W 0402
[Panasonic Electronic Components](#)

RFQ



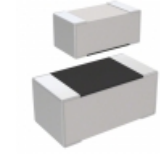
KTR03EZPF1504
 RES SMD 1.5M OHM 1% 1/10W 0603
[Rohm Semiconductor](#)

RFQ



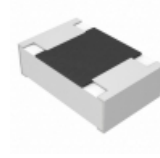
ERA-8APB4990V
 RES SMD 499 OHM 0.1% 1/4W 1206
[Panasonic Electronic Components](#)

RFQ



RC0201DR-073K01L
 RES SMD 3.01KOHM 0.5% 1/20W 0201
[Yageo](#)

RFQ



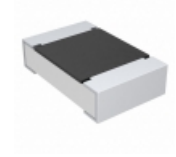
ERJ-P6WF1432V
 RES SMD 14.3K OHM 1% 1/2W 0805
[Panasonic Electronic Components](#)

RFQ



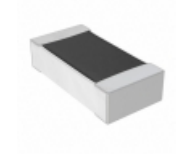
RT0402FRE0711RL
 RES SMD 11 OHM 1% 1/16W 0402
[Yageo](#)

RFQ



CRCW080542K2FKTB
 RES SMD 42.2K OHM 1% 1/8W 0805
[Vishay Dale](#)

RFQ



RNCF0603DKE681K
 RES SMD 681K OHM 0.5% 1/10W 0603
[Stackpole Electronics Inc.](#)

RFQ



RT0402CRD07634RL
 RES SMD 634 OHM 0.25% 1/16W 0402
[Yageo](#)

RFQ



RNCF1206DTE24R0
 RES SMD 24 OHM 0.5% 1/4W 1206
[Stackpole Electronics Inc.](#)

RFQ