

SL1021B300R



[Hamlin / Littelfuse](#)

GDT 300V 20KA THROUGH HOLE

Lead free / RoHS Compliant

Circuit Protection

[SL1021B300R.pdf](#)

Buy Now

We can supply Hamlin / Littelfuse SL1021B300R, use the request quote form to request SL1021B300R price, Hamlin / Littelfuse Datasheet PDF and lead time. Zeanoit.com is a professional electronic components distributor. With 3+ Million line items of available electronic components can ship in short lead-time, over 250 thousand part numbers of electronic components in stock for immediately delivery, which may include part number SL1021B300R. The price and lead time for SL1021B300R depending on the quantity required, availability and warehouse location.

In Stock
475 pcs
Minimum:1
Multiples:100
Manufacturer lead time 10 weeks

PRICE	
1 pcs	\$5.12
5 pcs	\$4.944
10 pcs	\$4.768
50 pcs	\$3.709
100 pcs	\$3.091
250 pcs	\$3.002
500 pcs	\$2.561
1000 pcs	\$2.428

Shopping Process

1

Confirm the product

2

submit the order

3

payment

4

wait for delivery

5

receive the goods

Specifications

Voltage - DC Spark Over (Nom):	300V
Tolerance:	-
Series:	SL1021B
Packaging:	Tray
Package / Case:	Axial Cylinder, 3 Lead (Radial Bend)
Number of Poles:	3
Mounting Type:	Through Hole
Impulse Discharge Current (8/20µs):	20000A (20kA)
Fail Short:	No

Related products



SL1021B350C

GDT 350V 20KA
[Littelfuse Inc.](#)

RFQ



SL1021B350PF

GDT 350V 20KA T/H FAIL SHORT
[Littelfuse Inc.](#)

RFQ



SL1021B260R

GDT 260V 20KA THROUGH HOLE
[Littelfuse Inc.](#)

RFQ



SL1021B300RF

GDT 300V 20KA T/H FAIL SHORT
[Littelfuse Inc.](#)

RFQ



SL1021B260RF

GDT 260V 20KA T/H FAIL SHORT
[Littelfuse Inc.](#)

RFQ



SL1021B260RG

GDT 260V 20KA T/H FAIL SHORT
[Littelfuse Inc.](#)

RFQ



SL1021B260C

GDT 260V 20KA
[Littelfuse Inc.](#)

RFQ



SL1021B250X

GDT 250V 20KA THROUGH HOLE
[Littelfuse Inc.](#)

RFQ



SL1021B300RG

GDT 300V 20KA T/H FAIL SHORT
[Littelfuse Inc.](#)

RFQ



SL1021B300RS

GDT 300V 20KA THROUGH HOLE
[Littelfuse Inc.](#)

RFQ

Guess You May Looking For



DF3D29FU,LF

TVS DIODE 24VWM 47VC
[Toshiba Semiconductor and Storage](#)

RFQ



MSMLJ78CA

TVS DIODE 78VWM 126VC DO214AB
[Microsemi Corporation](#)

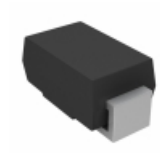
RFQ



SMBJP6KE91A-TP

TVS DIODE 77.8VWM 125VC SMBJ
[Micro Commercial Co](#)

RFQ



SMAJ70CA-E3/61

TVS DIODE 70VWM 113VC SMA
[Vishay Semiconductor Diodes Division](#)

RFQ



TPSMB18A

TVS DIODE 15.3VWM 25.5VC SMB AEQ
[Littelfuse Inc.](#)

RFQ



SMCJ160CA

TVS DIODE 160VWM 259VC SMC
[Littelfuse Inc.](#)

RFQ



TPSMA6L64A

TVS DIODE 64VWM 103VC SMA
[Littelfuse Inc.](#)

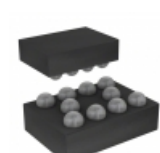
RFQ



UCLAMP0502T.TCT

TVS DIODE 5VWM 12.5VC SLP
[Semtech Corporation](#)

RFQ



HDMIULC6-4F3

TVS DIODE 3VWM 10-FLIPCHIP
[STMicroelectronics](#)

RFQ



P6KE160CA

TVS DIODE 136VWM 219VC DO15
[Fairchild/ON Semiconductor](#)

RFQ