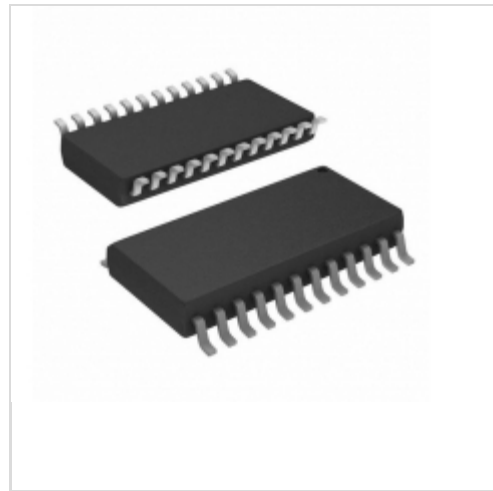


## CAT28C16AXI12



[AMI Semiconductor / ON Semiconductor](#)

IC EEPROM 16KBIT 120NS 24SOIC

Lead free / RoHS Compliant

Integrated Circuits (ICs)

[CAT28C16AXI12.pdf](#)

[Buy Now](#)

Images are for reference only.

See Product Specifications for product details.

If you are interested to buy CAT28C16AXI12, Just Email us.

Sales@zeanoit.com

our sales team will reply you within 24 hours

### Shopping Process

1

Confirm the product

2

submit the order

3

payment

4

wait for delivery

5

receive the goods

### Specifications

|                                 |                                |
|---------------------------------|--------------------------------|
| <b>Voltage - Supply:</b>        | 4.5 V ~ 5.5 V                  |
| <b>Supplier Device Package:</b> | 24-SOIC                        |
| <b>Speed:</b>                   | 120ns                          |
| <b>Series:</b>                  | -                              |
| <b>Packaging:</b>               | Tube                           |
| <b>Package / Case:</b>          | 24-SOIC (0.295", 7.50mm Width) |
| <b>Operating Temperature:</b>   | -40°C ~ 85°C (TA)              |
| <b>Memory Type:</b>             | Non-Volatile                   |
| <b>Memory Size:</b>             | 16Kb (2K x 8)                  |
| <b>Memory Format:</b>           | EEPROM                         |
| <b>Interface:</b>               | Parallel                       |

### Related products



**CAT28C16AXI90**

IC EEPROM 16KBIT 90NS 24SOIC

[ON Semiconductor](#)

RFQ



**CAT28C16AXI-90T**

IC EEPROM 16KBIT 90NS 24SOIC

[ON Semiconductor](#)

RFQ



**CAT28C16AXI-12T**

IC EEPROM 16KBIT 120NS 24SOIC

[ON Semiconductor](#)

RFQ



**CAT28C17AWI-20**

[CATALYST](#)

RFQ



**CAT28C16AX20**

IC EEPROM 16KBIT 200NS 24SOIC

[ON Semiconductor](#)

RFQ



**CAT28C16AXI20**

IC EEPROM 16KBIT 200NS 24SOIC

[ON Semiconductor](#)

RFQ



**CAT28C16AXI-20T**

IC EEPROM 16KBIT 200NS 24SOIC

[ON Semiconductor](#)

RFQ



**CAT28C17AW-20**

[CATALYST](#)

RFQ



**CAT28C16AX-20**

[CSI](#)

RFQ

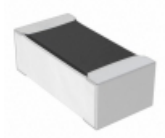


**CAT28C17AP**

[CSI](#)

RFQ

### Guess You May Looking For



**RN73C1E9K53BTD**

RES SMD 9.53KOHM 0.1% 1/16W 0402

[TE Connectivity Passive Product](#)

RFQ



**KTR18EZPF2803**

RES SMD 280K OHM 1% 1/4W 1206

[Rohm Semiconductor](#)

RFQ

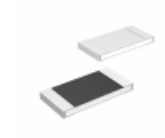


**CSR0402FKR300**

RES SMD 0.3 OHM 1% 1/8W 0402

[Stackpole Electronics Inc.](#)

RFQ

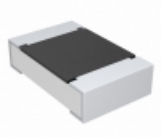


**MCR18ERTFL3R90**

RES SMD 3.9 OHM 1% 1/4W 1206

[Rohm Semiconductor](#)

RFQ

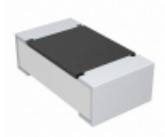


**CRCW0805127KFKEB**

RES SMD 127K OHM 1% 1/8W 0805

[Vishay Dale](#)

RFQ

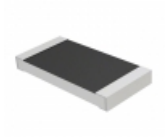


**CRCW0603147RFKTA**

RES SMD 147 OHM 1% 1/10W 0603

[Vishay Dale](#)

RFQ

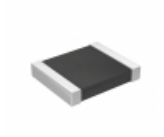


**RMCF2010FT130K**

RES SMD 130K OHM 1% 3/4W 2010

[Stackpole Electronics Inc.](#)

RFQ



**AA1210FR-073R6L**

RES SMD 3.6 OHM 1% 1/2W 1210

[Yageo](#)

RFQ



**AT0603BRD071K5L**

RES SMD 1.5K OHM 0.1% 1/10W 0603

[Yageo](#)

RFQ



**CRGV2512J4M3**

RES SMD 4.3M OHM 5% 1W 2512

[TE Connectivity Passive Product](#)

RFQ