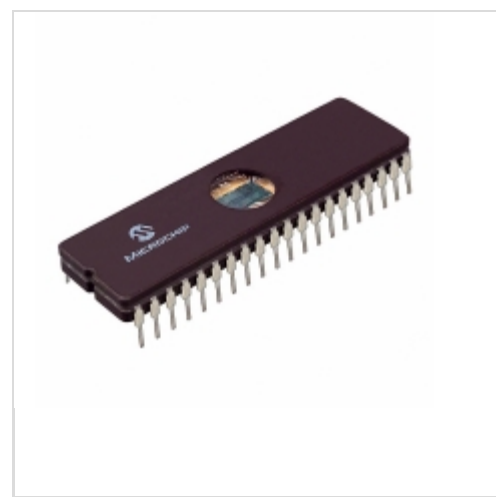


PIC18C442/JW



Microchip Technology

IC MCU 8BIT 16KB EPROM 40CDIP
 Contains lead / RoHS non-compliant
 Integrated Circuits (ICs)

- [1.PIC18C442/JW.pdf](#)
- [2.PIC18C442/JW.pdf](#)
- [3.PIC18C442/JW.pdf](#)
- [4.PIC18C442/JW.pdf](#)
- [5.PIC18C442/JW.pdf](#)

[Buy Now](#)

We can supply PIC18C442/JW, use the request quote form to request PIC18C442/JW price and lead time. Zeano is a professional electronic components distributor. With 3+ Million line items of available electronic components can ship in short lead-time, over 250 thousand part numbers of electronic components in stock for immediately delivery, which may include part number PIC18C442/JW. The price and lead time for PIC18C442/JW depending on the quantity required and warehouse location. Contact us and our sales representative will provide you price. We look forward to work with you.

Shopping Process

1

Confirm the product

2

submit the order

3

payment

4

wait for delivery

5

receive the goods

Specifications

Voltage - Supply (Vcc/Vdd):	4.2 V ~ 5.5 V
Supplier Device Package:	14-CERDIP
Speed:	40MHz
Series:	PIC® 18C
RAM Size:	512 x 8
Program Memory Type:	EPROM, UV
Program Memory Size:	16KB (8K x 16)
Peripherals:	Brown-out Detect/Reset, LVD, POR, PWM, WDT
Packaging:	Tube
Package / Case:	40-CDIP (0.600", 15.24mm) Window
Oscillator Type:	External
Operating Temperature:	0°C ~ 70°C (TA)
Number of I/O:	33
EEPROM Size:	-
Data Converters:	A/D 8x10b
Core Size:	8-Bit
Core Processor:	PIC
Connectivity:	I ² C, SPI, UART/USART

Related products



PIC18C442-E/P
 IC MCU 8BIT 16KB OTP 40DIP
[Microchip Technology](#)

RFQ



PIC18C442T-I/L
 IC MCU 8BIT 16KB OTP 44PLCC
[Microchip Technology](#)

RFQ



PIC18C442-I/PT
 IC MCU 8BIT 16KB OTP 44TQFP
[Microchip Technology](#)

RFQ



PIC18C442T-I/PT
 IC MCU 8BIT 16KB OTP 44TQFP
[Microchip Technology](#)

RFQ



PIC18C442-I/L
 IC MCU 8BIT 16KB OTP 44PLCC
[Microchip Technology](#)

RFQ



PIC18C442-I/P
 IC MCU 8BIT 16KB OTP 40DIP
[Microchip Technology](#)

RFQ



PIC18C452-E/L
 IC MCU 8BIT 32KB OTP 44PLCC
[Microchip Technology](#)

RFQ



PIC18C442T-E/L
 IC MCU 8BIT 16KB OTP 44PLCC
[Microchip Technology](#)

RFQ



PIC18C442T-E/PT
 IC MCU 8BIT 16KB OTP 44TQFP
[Microchip Technology](#)

RFQ



PIC18C442-E/PT
 IC MCU 8BIT 16KB OTP 44TQFP
[Microchip Technology](#)

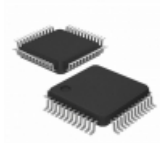
RFQ

Guess You May Looking For



MIC2004-0.8YM5-TR
 IC DISTRIBUTION SW 0.8A SOT23-5
[Microchip Technology](#)

RFQ



TPS2383BPMR
 IC OCTAL POWER MANAGER 64LQFP
[Texas Instruments](#)

RFQ



MAX6333UR20D3+T
 IC MPU/RESET CIRC 2.00V SOT23-5
[Maxim Integrated](#)

RFQ



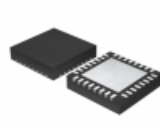
XC6123D642ER-G
 IC WATCHDOG TIMER 6-USP
[Torex Semiconductor Ltd](#)

RFQ



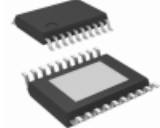
SP6330EK1-L-X-J-C/TR
 IC SUPERVISOR WATCHDOG 8TSOT
[Exar Corporation](#)

RFQ



LTC3890IUH#PBF
 IC REG CTRLR BUCK/SEPIC 32QFN
[Linear Technology](#)

RFQ



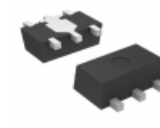
TPS71H01QPWPR
 IC REG LDO ADJ 0.5A 20HTSSOP
[Texas Instruments](#)

RFQ



S-817B57AMC-CXUT2G
 IC REG LDO 5.7V 75MA SOT23-5
[SII Semiconductor Corporation](#)

RFQ



S-13A1A16-U5T1U3
 IC REG LINEAR 1.6V 1A SOT89-5
[SII Semiconductor Corporation](#)

RFQ



MIC37252BR
 IC REG LDO ADJ 2.5A SPAK-5
[Microchip Technology](#)

RFQ

