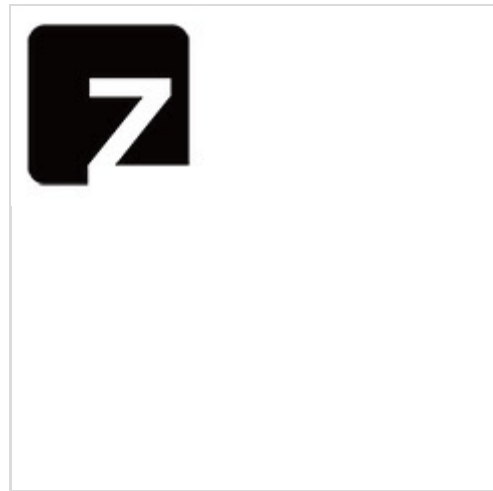


UC2710NG4


N/A
 IC HIGH CURRENT FET DRIVER 8-DIP
 Lead free / RoHS Compliant
 Integrated Circuits (ICs)

Buy Now

Part No. UC2710NG4 Is this a common-used part? : Yes
 Shipped from : HK or Singapore warehouse
 Same model may have multiple batches, images only for reference.
 ECAD Models : Contact us to get
 Email:sales@zeanoit.com

Out Stock
0 pcs

Minimum:1

Multiples:1

Manufacturer lead time 10 weeks

Shopping Process


Confirm the product

submit the order

payment

wait for delivery

receive the goods

Specifications

Voltage - Supply:	4.7 V ~ 18 V
Supplier Device Package:	8-PDIP
Series:	-
Rise / Fall Time (Typ):	85ns, 85ns
Packaging:	Tube
Package / Case:	8-DIP (0.300", 7.62mm)
Operating Temperature:	-55°C ~ 150°C (TJ)
Number of Drivers:	1
Mounting Type:	Through Hole
Logic Voltage - VIL, VIH:	0.8V, 2V
Input Type:	Inverting, Non-Inverting
Gate Type:	IGBT, N-Channel MOSFET
Driven Configuration:	Low-Side
Current - Peak Output (Source, Sink):	6A, 6A
Channel Type:	Single

Related products


UC27131DRG4

in stock

[N/A](#)
[RFQ](#)

UC27131DG4

IC LOW SIDE SMART PWR-SW 8SOIC

[N/A](#)
[RFQ](#)

UC2710TG3

IC HIGH CURRENT FET DRVR TO220-5

[N/A](#)
[RFQ](#)

UC2710
[TI](#)
[RFQ](#)

UC2709DW

IC DUAL HS FET DRIVER 16-SOIC

[N/A](#)
[RFQ](#)

UC2710T

IC HIGH CURRENT FET DRVR TO220-5

[N/A](#)
[RFQ](#)

UC27131D

IC LOW SIDE SMART PWR-SW 8SOIC

[N/A](#)
[RFQ](#)

UC2709NG4

IC DUAL HIGH SID FET DRIVER 8DIP

[N/A](#)
[RFQ](#)

UC2710N

IC HIGH CURRENT FET DRIVER 8-DIP

[N/A](#)
[RFQ](#)

UC2709N

IC DUAL HIGH SID FET DRIVER 8DIP

[N/A](#)
[RFQ](#)

Guess You May Looking For


RT1206CRB07634KL

RES SMD 634K OHM 0.25% 1/4W 1206

[Yageo](#)
[RFQ](#)

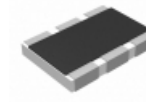
RNCF2010BTE499R

RES SMD 499 OHM 0.1% 1/3W 2010

[Stackpole Electronics Inc.](#)
[RFQ](#)

RT1210CRE0734K8L

RES SMD 34.8KOHM 0.25% 1/4W 1210

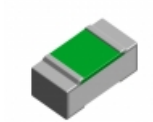
[Yageo](#)
[RFQ](#)

AA1218FK-075R23L

RES SMD 5.23 OHM 1W 1812 WIDE

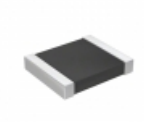
[Yageo](#)
[RFQ](#)

MCS04020D6201BE100

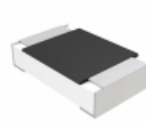
RES SMD 6.2K OHM 0.1% 1/16W 0402

[Vishay Beyschlag](#)
[RFQ](#)

ERA-2HRC2000X

RES SMD 200 OHM 0.25% 1/16W 0402

[Panasonic Electronic Components](#)
[RFQ](#)

RT1210CRD07249KL

RES SMD 249K OHM 0.25% 1/4W 1210

[Yageo](#)
[RFQ](#)

MCU08050D2611BP100

RES SMD 2.61K OHM 0.1% 1/8W 0805

[Vishay Beyschlag](#)
[RFQ](#)

RG1608N-4530-B-T5

RES SMD 453 OHM 0.1% 1/10W 0603

[Susumu](#)
[RFQ](#)

RT0805WRD072K32L

RES SMD 2.32KOHM 0.05% 1/8W 0805

[Yageo](#)
[RFQ](#)