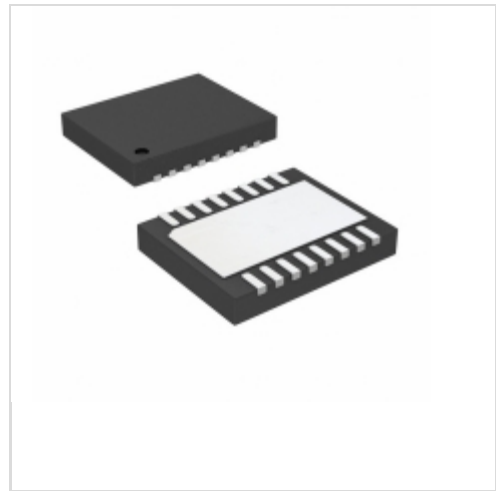


LTC4223IDHD-2#TRPBF



[Linear Technology / Analog Devices](#)

IC CNTRLR HOT SWAP DUAL 16-DFN

Lead free / RoHS Compliant

Integrated Circuits (ICs)

[LTC4223IDHD-2#TRPBF.pdf](#)

Buy Now

We can supply LTC4223IDHD-2#TRPBF, use the request quote form to request LTC4223IDHD-2#TRPBF price and lead time. Zeano is a professional electronic components distributor. With 3+ Million line items of available electronic components can ship in short lead-time, over 250 thousand part numbers of electronic components in stock for immediately delivery, which may include part number LTC4223IDHD-2#TRPBF. The price and lead time for LTC4223IDHD-2#TRPBF depending on the quantity required and warehouse location. Contact us and our sales representative will provide you price. We look forward to work with you.

Out Stock

0 pcs

Minimum:1

Multiples:100

Manufacturer lead time 10 weeks

Shopping Process

1

Confirm the product

2

submit the order

3

payment

4

wait for delivery

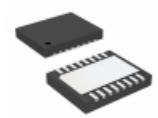
5

receive the goods

Specifications

Voltage - Supply:	2.7 V ~ 14 V
Type:	Hot Swap Controller
Supplier Device Package:	16-DFN (5x4)
Series:	-
Programmable Features:	Current Limit, Fault Timeout
Packaging:	Tape & Reel (TR)
Package / Case:	16-WFDFN Exposed Pad
Operating Temperature:	-40°C ~ 85°C
Number of Channels:	2
Mounting Type:	Surface Mount
Internal Switch(s):	Both
Features:	Auto Retry, Thermal Limit, UVLO
Feature Pins:	12IMON, 12ON, /12PGOOD, AUXON, /AUXPGOOD, /EN, /FAULT, TIMER
Current - Supply:	800µA
Current - Output (Max):	-
Applications:	ATCA, MicroTCA™

Related products



LTC4223IDHD-1#PBF

IC CNTRLR HOT SWAP DUAL 16-DFN

[Linear Technology](#)

RFQ



LTC4223IGN-2#TRPBF

IC CNTRLR HOT SWAP DUAL 16-SSOP

[Linear Technology](#)

RFQ

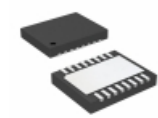


LTC4223CGN-2#TRPBF

IC CNTRLR HOT SWAP DUAL 16-SSOP

[Linear Technology](#)

RFQ

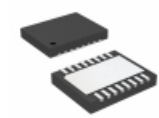


LTC4223IDHD-1#TRPBF

IC CNTRLR HOT SWAP DUAL 16-DFN

[Linear Technology](#)

RFQ

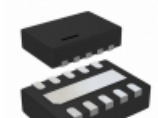


LTC4223IDHD-2#PBF

IC CNTRLR HOT SWAP DUAL 16-DFN

[Linear Technology](#)

RFQ



LTC4224CDD-1#TRMPBF

IC CNTRLR HOT SWAP DUAL 10-DFN

[Linear Technology](#)

RFQ



LTC4223IGN-1#PBF

IC CNTRLR HOT SWAP DUAL 16-SSOP

[Linear Technology](#)

RFQ



LTC4223CGN-2#PBF

IC CNTRLR HOT SWAP DUAL 16-SSOP

[Linear Technology](#)

RFQ



LTC4223IGN-1#TRPBF

IC CNTRLR HOT SWAP DUAL 16-SSOP

[Linear Technology](#)

RFQ



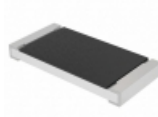
LTC4223IGN-2#PBF

IC CNTRLR HOT SWAP DUAL 16-SSOP

[Linear Technology](#)

RFQ

Guess You May Looking For

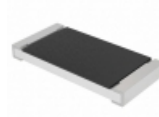


CRCW2512130KFKEGHP

RES SMD 130K OHM 1% 1.5W 2512

[Vishay Dale](#)

RFQ



CRCW2512274RFKEGHP

RES SMD 274 OHM 1% 1.5W 2512

[Vishay Dale](#)

RFQ

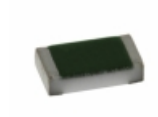


RT1206BRC07150KL

RES SMD 150K OHM 0.1% 1/4W 1206

[Yageo](#)

RFQ

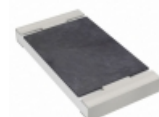


TNPW060345R3BETA

RES SMD 45.3 OHM 0.1% 1/10W 0603

[Vishay Dale](#)

RFQ

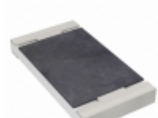


RT2010DKE07180RL

RES SMD 180 OHM 0.5% 1/2W 2010

[Yageo](#)

RFQ

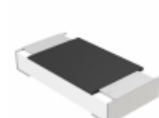


RT2010DKE07332RL

RES SMD 332 OHM 0.5% 1/2W 2010

[Yageo](#)

RFQ

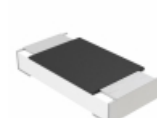


MCA12060D1802BP100

RES SMD 18K OHM 0.1% 1/4W 1206

[Vishay Beyschlag](#)

RFQ



MCA12060D1781BP100

RES SMD 1.78K OHM 0.1% 1/4W 1206

[Vishay Beyschlag](#)

RFQ



RT0805BRB0791RL

RES SMD 91 OHM 0.1% 1/8W 0805

[Yageo](#)

RFQ



HRG3216P-93R1-D-T5

RES SMD 93.1 OHM 0.5% 1W 1206

[Susumu](#)

RFQ