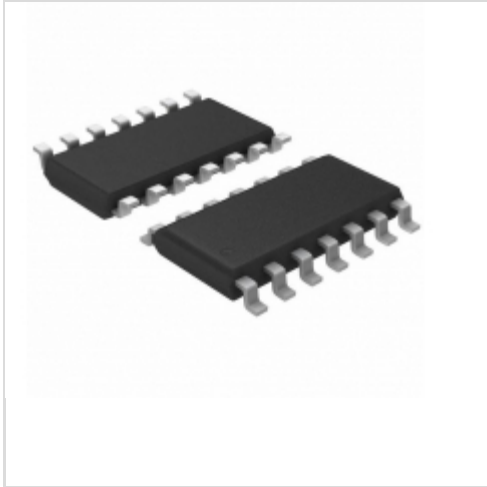


X40021S14IZ-B



[Intersil](#)

IC VOLTAGE MONITOR DUAL 14-SOIC

Lead free / RoHS Compliant

Integrated Circuits (ICs)

[X40021S14IZ-B.pdf](#)

[Buy Now](#)

Images are for reference only.

See Product Specifications for product details.

If you are interested to buy X40021S14IZ-B, Just Email us.

Sales@zeanoit.com

our sales team will reply you within 24 hours

Shopping Process

1

Confirm the product

2

submit the order

3

payment

4

wait for delivery

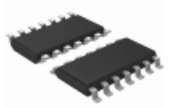
5

receive the goods

Specifications

Voltage - Threshold:	2.6V, 4.6V
Type:	Multi-Voltage Supervisor
Supplier Device Package:	14-SOIC
Series:	-
Reset Timeout:	Adjustable/Selectable
Reset:	Active Low
Packaging:	Tube
Package / Case:	14-SOIC (0.154", 3.90mm Width)
Output:	Open Drain or Open Collector
Operating Temperature:	-40°C ~ 85°C (TA)
Number of Voltages Monitored:	2
Mounting Type:	Surface Mount

Related products



X40021S14IZ-AT1
IC VOLTAGE MONITOR DUAL 14-SOIC
[Intersil](#)

RFQ



X40021S14Z-B
IC VOLTAGE MONITOR DUAL 14-SOIC
[Intersil](#)

RFQ



X40021S14I-CT1
IC VOLTAGE MONITOR DUAL 14-SOIC
[Intersil](#)

RFQ



X40021S14IZ-BT1
IC VOLTAGE MONITOR DUAL 14-SOIC
[Intersil](#)

RFQ



X40021S14Z-BT1
IC VOLTAGE MONITOR DUAL 14-SOIC
[Intersil](#)

RFQ



X40021S14IZ-A
IC VOLTAGE MONITOR DUAL 14-SOIC
[Intersil](#)

RFQ



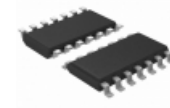
X40021S14Z-A
IC VOLTAGE MONITOR DUAL 14-SOIC
[Intersil](#)

RFQ



X40021S14I-BT1
IC VOLTAGE MONITOR DUAL 14-SOIC
[Intersil](#)

RFQ



X40021S14Z-AT1
IC VOLTAGE MONITOR DUAL 14-SOIC
[Intersil](#)

RFQ



X40021S14I-C
IC VOLTAGE MONITOR DUAL 14-SOIC
[Intersil](#)

RFQ

Guess You May Looking For



RG1608P-4320-B-T1
RES SMD 432 OHM 0.1% 1/10W 0603
[Susumu](#)

RFQ



RG2012P-1473-C-T5
RES SMD 147K OHM 0.25% 1/8W 0805
[Susumu](#)

RFQ



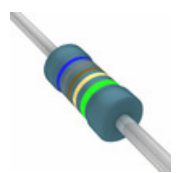
RAVF104DFT100K
RES ARRAY 4 RES 100K OHM 0804
[Stackpole Electronics Inc.](#)

RFQ



ALSR103K300FE12
RES 3.3K OHM 7W 1% AXIAL
[Vishay Dale](#)

RFQ



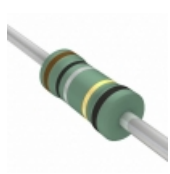
MBB02070C6819DRP00
RES 68.1 OHM 0.6W 0.5% AXIAL
[Vishay BC Components](#)

RFQ



CMF554K7000JKEA
RES 4.7K OHM 1/2W 5% AXIAL
[Vishay Dale](#)

RFQ



NKN200JR-73-16R
RES 16 OHM 2W 5% AXIAL
[Yageo](#)

RFQ



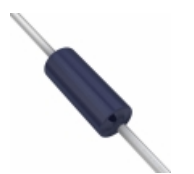
CMF605K6200FHEA
RES 5.62K OHM 1W 1% AXIAL
[Vishay Dale](#)

RFQ



RN60D12R4FRE6
RES 12.4 OHM 1/4W 1% AXIAL
[Vishay Dale](#)

RFQ



CMF502K0500FKEB
RES 2.05K OHM 1/4W 1% AXIAL
[Vishay Dale](#)

RFQ