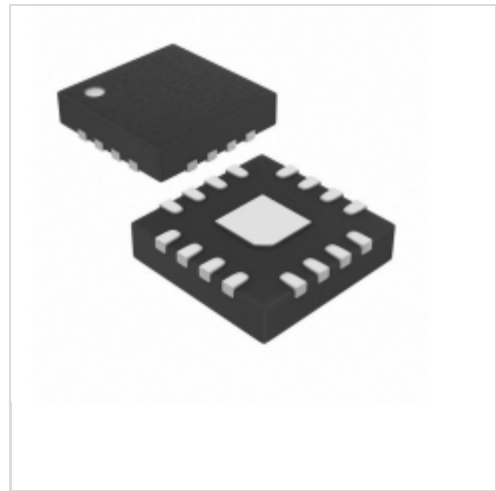


MAX16021PTEZ+



Maxim Integrated

IC SUPERVISOR OD 2.323V 16TQFN

Lead free / RoHS Compliant

Integrated Circuits (ICs)

[1.MAX16021PTEZ+.pdf](#)

[2.MAX16021PTEZ+.pdf](#)

Buy Now

Out Stock

0 pcs

Minimum:1

Multiples:100

Manufacturer lead time 10 weeks

PRICE

1 pcs	\$20.48
10 pcs	\$19.46
25 pcs	\$14.18
50 pcs	\$13.47
100 pcs	\$9.45
250 pcs	\$9.37

We can supply Maxim Integrated MAX16021PTEZ+, use the request quote form to request MAX16021PTEZ+ price, Maxim Integrated Datasheet PDF and lead time. Zeanoit.com is a professional electronic components distributor. With 3+ Million line items of available electronic components can ship in short lead-time, over 250 thousand part numbers of electronic components in stock for immediately delivery, which may include part number MAX16021PTEZ+. The price and lead time for MAX16021PTEZ+ depending on the quantity required, availability and warehouse location.

Shopping Process

1

Confirm the product

2

submit the order

3

payment

4

wait for delivery

5

receive the goods

Specifications

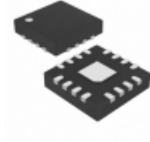
Voltage - Threshold:	2.323V
Type:	Simple Reset/Power-On Reset
Supplier Device Package:	16-TQFN (4x4)
Series:	-
Reset Timeout:	145 ms Minimum
Reset:	Active High/Active Low
Packaging:	Tube
Package / Case:	16-WQFN Exposed Pad
Output:	Open Drain or Open Collector
Operating Temperature:	-40°C ~ 85°C (TA)
Number of Voltages Monitored:	1
Mounting Type:	Surface Mount

Related products



MAX16023LTAY18+T
IC BATTERY BACKUP 1.8V 8TDFN
[Maxim Integrated](#)

RFQ



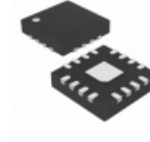
MAX16021PTEV+
IC SUPERVISOR OD 1.571V 16TQFN
[Maxim Integrated](#)

RFQ



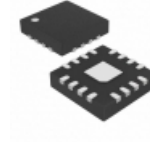
MAX16023LTAM33+T
IC BATTERY BACKUP 3.3V 8TDFN
[Maxim Integrated](#)

RFQ



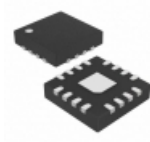
MAX16021PTEV+T
IC SUPERVISOR OD 1.571V 16TQFN
[Maxim Integrated](#)

RFQ



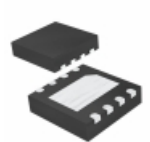
MAX16021PTEZ+T
IC SUPERVISOR OD 2.323V 16TQFN
[Maxim Integrated](#)

RFQ



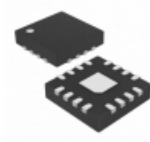
MAX16021PTEW+
IC SUPERVISOR OD 1.661V 16TQFN
[Maxim Integrated](#)

RFQ



MAX16023LTAL18+T
IC BATTERY BACKUP 1.8V 8TDFN
[Maxim Integrated](#)

RFQ



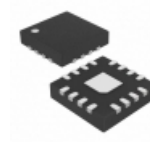
MAX16021PTEY+
IC SUPERVISOR OD 2.192V 16TQFN
[Maxim Integrated](#)

RFQ



MAX16021_TE_+T
in stock
[MAXIM](#)

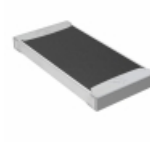
RFQ



MAX16021PTET+
IC SUPERVISOR OD 3.100V 16TQFN
[Maxim Integrated](#)

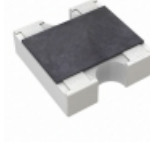
RFQ

Guess You May Looking For



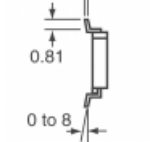
TNPW2512562KBEEG
RES SMD 562K OHM 0.1% 1/2W 2512
[Vishay Dale](#)

RFQ



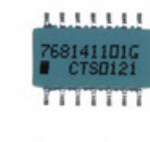
YC162-JR-07820KL
RES ARRAY 2 RES 820K OHM 0606
[Yageo](#)

RFQ



768143474GP
RES ARRAY 7 RES 470K OHM 14SOIC
[CTS Resistor Products](#)

RFQ



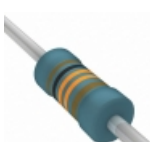
768141101G
RES ARRAY 13 RES 100 OHM 14SOIC
[CTS Resistor Products](#)

RFQ



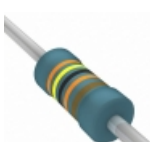
CRB2A4E392JT
RES ARRAY 4 RES 3.9K OHM 0804
[AVX Corporation](#)

RFQ



MBA02040C1133FCT00
RES 113K OHM 0.4W 1% AXIAL
[Vishay BC Components](#)

RFQ



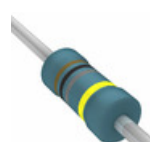
MBA02040C3403FCT00
RES 340K OHM 0.4W 1% AXIAL
[Vishay BC Components](#)

RFQ



RN60D3403FRE6
RES 340K OHM 1/4W 1% AXIAL
[Vishay Dale](#)

RFQ



HVA08JA1G00
RES 1G OHM 0.8W 5% AXIAL
[Stackpole Electronics Inc.](#)

RFQ



RNF14BAE2K64
RES 2.64K OHM 1/4W .1% AXIAL
[Stackpole Electronics Inc.](#)

RFQ