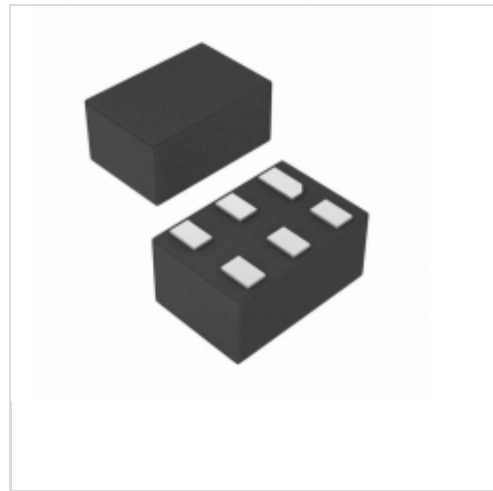


MAX4915BELT+T

Maxim Integrated

IC SWITCH 1X1 6UTDFN

Lead free / RoHS Compliant

Integrated Circuits (ICs)

1.MAX4915BELT+T.pdf

2.MAX4915BELT+T.pdf

We can supply MAX4915BELT+T, use the request quote form to request MAX4915BELT+T price and lead time. Zeano is a professional electronic components distributor. With 3+ Million line items of available electronic components can ship in short lead-time, over 250 thousand part numbers of electronic components in stock for immediately delivery, which may include part number MAX4915BELT+T. The price and lead time for MAX4915BELT+T depending on the quantity required and warehouse location. Contact us and our sales representative will provide you price. We look forward to work with you.

In Stock
971 pcs

Minimum:1

Multiples:100

Manufacturer lead time 10 weeks

PRICE

| | |
|---------|--------|
| 1 pcs | \$3.76 |
| 10 pcs | \$3.54 |
| 25 pcs | \$2.84 |
| 50 pcs | \$2.69 |
| 100 pcs | \$2.48 |
| 250 pcs | \$2.35 |
| 500 pcs | \$1.77 |

Shopping Process

1
Confirm the product
2
submit the order
3
payment
4
wait for delivery
5
receive the goods

Specifications

| | |
|---------------------------------|------------------|
| Voltage - Input: | 2.3 V ~ 5.5 V |
| Supplier Device Package: | 6-UDFN (2x2) |
| Series: | - |
| Sensing Method: | - |
| Packaging: | Cut Tape (CT) |
| Package / Case: | 6-WDFN |
| Operating Temperature: | -40°C ~ 85°C |
| Mounting Type: | Surface Mount |
| Function: | Current Limiting |
| Current - Output: | 200mA |
| Accuracy: | - |

Related products


MAX4915AEUK+T
 IC SWITCH 1X1 SOT23-5
[Maxim Integrated](#)

RFQ


MAX4915AELT+TG05
 in stock
[MAXIM](#)

RFQ


MAX4916AELT+T
 IC CURR LIMIT SWITCH 200MA 6UDFN
[Maxim Integrated](#)

RFQ


MAX4915AELT+T
 IC SWITCH 1X1 6UTDFN
[Maxim Integrated](#)

RFQ


MAX4916BELT+T
 IC CURR LIMIT SWITCH 200MA 6UDFN
[Maxim Integrated](#)

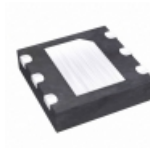
RFQ


MAX4917AELT+T
 IC SWITCH 1X1 6UTDFN
[Maxim Integrated](#)

RFQ


MAX4917AELT+TG05
 in stock
[MAXIM](#)

RFQ


MAX4915AETT+T
 IC SWITCH 1X1 6TDFN
[Maxim Integrated](#)

RFQ


MAX4915BEUK+T
 IC SWITCH 200MA LATCHOFF SOT23-5
[Maxim Integrated](#)

RFQ

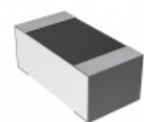

MAX4915AEUK
[MAXIM](#)

RFQ

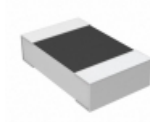
Guess You May Looking For


RT0805CRB07215KL
 RES SMD 215K OHM 0.25% 1/8W 0805
[Yageo](#)

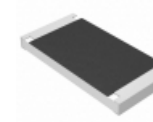
RFQ


CPF0603B59RE1
 RES SMD 59 OHM 0.1% 1/16W 0603
[TE Connectivity Passive Product](#)

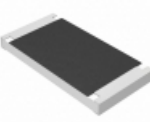
RFQ


CPF0805B301KE1
 RES SMD 301K OHM 0.1% 1/10W 0805
[TE Connectivity Passive Product](#)

RFQ


ERJ-S1TF8200U
 RES SMD 820 OHM 1% 1W 2512
[Panasonic Electronic Components](#)

RFQ


ERJ-S1TF4530U
 RES SMD 453 OHM 1% 1W 2512
[Panasonic Electronic Components](#)

RFQ


AT1206CRD0743RL
 RES SMD 43 OHM 0.25% 1/4W 1206
[Yageo](#)

RFQ


RG3216P-7681-B-T1
 RES SMD 7.68K OHM 0.1% 1/4W 1206
[Susumu](#)

RFQ


RG3216P-1073-B-T1
 RES SMD 107K OHM 0.1% 1/4W 1206
[Susumu](#)

RFQ


RT1206CRC073K6L
 RES SMD 3.6K OHM 0.25% 1/4W 1206
[Yageo](#)

RFQ


RT1206CRC075K11L
 RES SMD 5.11KOHM 0.25% 1/4W 1206
[Yageo](#)

RFQ