

**LYT4227E3**



**Power Integrations**

IC LED DRIVER OFFL 7.33A ESIP-7C

Lead free / RoHS Compliant

Integrated Circuits (ICs)

[LYT4227E3.pdf](#)

**Buy Now**

We can supply Power Integrations LYT4227E3, use the request quote form to request LYT4227E3 price, Power Integrations Datasheet PDF and lead time. Zeanoit.com is a professional electronic components distributor. With 3+ Million line items of available electronic components can ship in short lead-time, over 250 thousand part numbers of electronic components in stock for immediately delivery, which may include part number LYT4227E3. The price and lead time for LYT4227E3 depending on the quantity required, availability and warehouse location.

**Out Stock**

**0 pcs**

Minimum:1

Multiples:100

Manufacturer lead time 10 weeks

Shopping Process

**1**

Confirm the product

**2**

submit the order

**3**

payment

**4**

wait for delivery

**5**

receive the goods

Specifications

<b>Voltage - Supply (Min):</b>	160VAC
<b>Voltage - Supply (Max):</b>	300VAC
<b>Voltage - Output:</b>	-
<b>Type:</b>	AC DC Offline Switcher
<b>Topology:</b>	Flyback, Step-Down (Buck), Step-Up (Boost)
<b>Supplier Device Package:</b>	eSIP-7C
<b>Series:</b>	LYTSwitch™-4
<b>Packaging:</b>	Tube
<b>Package / Case:</b>	7-SIP, 6 Leads, Exposed Pad, Formed Leads
<b>Operating Temperature:</b>	-40°C ~ 150°C (TJ)
<b>Number of Outputs:</b>	1
<b>Mounting Type:</b>	Through Hole
<b>Internal Switch(s):</b>	Yes
<b>Frequency:</b>	132kHz
<b>Dimming:</b>	-
<b>Current - Output / Channel:</b>	7.33A (Switch)
<b>Applications:</b>	-

Related products



**LYT4227E**

IC LED DRIVER OFFL 7.33A ESIP-7C

[Power Integrations](#)

RFQ



**LYT4311E**

POWER

[Power Integrations](#)

RFQ



**LYT4228E**

IC LED DRIVER OFFLINE 9A ESIP-7C

[Power Integrations](#)

RFQ



**LYT4225E**

IC LED DRIVER OFFL 5.44A ESIP-7C

[Power Integrations](#)

RFQ



**LYT4226E3**

IC LED DRIVER OFFL 6.88A ESIP-7C

[Power Integrations](#)

RFQ

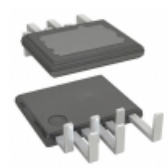


**LYT4228E3**

IC LED DRIVER OFFLINE 9A ESIP-7C

[Power Integrations](#)

RFQ



**LYT4311L**

IC LED DRIVER OFFL DIM ESIP-7F

[Power Integrations](#)

RFQ



**LYT4311E2**

IC LED DRIVER OFFL DIM ESIP-7C

[Power Integrations](#)

RFQ



**LYT4226E**

IC LED DRIVER OFFL 6.88A ESIP-7C

[Power Integrations](#)

RFQ



**LYT4225E3**

IC LED DRIVER OFFL 5.44A ESIP-7C

[Power Integrations](#)

RFQ

Guess You May Looking For



**RG1005N-2492-B-T5**

RES SMD 24.9KOHM 0.1% 1/16W 0402

[Susumu](#)

RFQ



**RG2012N-912-W-T5**

RES SMD 9.1K OHM 0.05% 1/8W 0805

[Susumu](#)

RFQ



**TNPW0603150RBEEN**

RES SMD 150 OHM 0.1% 1/10W 0603

[Vishay Dale](#)

RFQ



**TNPW0805806KBEEN**

RES SMD 806K OHM 0.1% 1/8W 0805

[Vishay Dale](#)

RFQ

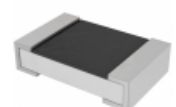


**MLF14BTE220K**

RES SMD 220K OHM 0.1% 1/4W 0204

[Stackpole Electronics Inc.](#)

RFQ



**PE0805FRM470R05L**

RES SMD 0.05 OHM 1% 1/2W 0805

[Yageo](#)

RFQ



**RG1005N-203-W-T5**

RES SMD 20K OHM 0.05% 1/16W 0402

[Susumu](#)

RFQ



**RT1210CRB0771R5L**

RES SMD 71.5 OHM 0.25% 1/4W 1210

[Yageo](#)

RFQ



**RT1210WRB077K5L**

RES SMD 7.5K OHM 0.05% 1/4W 1210

[Yageo](#)

RFQ



**PTN1206E74R1BST1**

RES SMD 74.1 OHM 0.1% 0.4W 1206

[Vishay Thin Film](#)

RFQ

