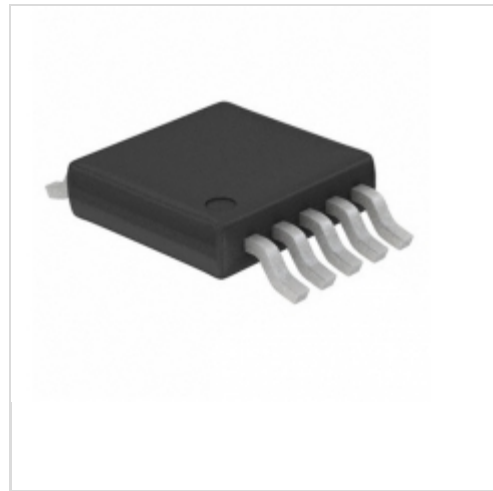


## MAX16915AUB/V+T



**Maxim Integrated**

IC CTRLR IDEAL DIODE 10UMAX

Lead free / RoHS Compliant

Integrated Circuits (ICs)

[1.MAX16915AUB/V+T.pdf](#)

[2.MAX16915AUB/V+T.pdf](#)

**Buy Now**

part#MAX16915AUB/V+T is available, see description of MAX16915AUB/V+T as below

use the request quote form to request MAX16915AUB/V+T price and lead time.

Buy Electronic Components at zeanoit.com .we are an independent distributor of electronic components with extensive inventory in stock.

The price and lead time for MAX16915AUB/V+T depending on the quantity required, availability and warehouse location.Contact us today and our sales team will send you quotation soon.

Email: sales@zeanoit.com

### Shopping Process

**1**

Confirm the product

**2**

submit the order

**3**

payment

**4**

wait for delivery

**5**

receive the goods

### Specifications

<b>Supplier Device Package:</b>	10-uMAX
<b>Series:</b>	-
<b>Packaging:</b>	Tape & Reel (TR)
<b>Package / Case:</b>	10-TFSOP, 10-MSOP (0.118", 3.00mm Width)
<b>Operating Temperature:</b>	-40°C ~ 125°C (TA)
<b>Number of Cells:</b>	-
<b>Interface:</b>	-
<b>Function:</b>	Battery Protection
<b>Fault Protection:</b>	Over Voltage, Reverse Battery
<b>Battery Chemistry:</b>	-

### Related products



**MAX16917BGEE/V+**  
IC PROT USB2.0 VBUS QSOP  
[Maxim Integrated](#)

RFQ



**MAX16915AUB/V+**  
IC CTRLR IDEAL DIODE 10UMAX  
[Maxim Integrated](#)

RFQ



**MAX16915AUB/V+**  
in stock  
[MAXIM](#)

RFQ



**MAX16917BGEE/ V+**  
in stock  
[MAXIM](#)

RFQ



**MAX16915AUB+T**  
IC LED DVR HBRIGHT 4CH UMAX  
[Maxim Integrated](#)

RFQ



**MAX16916GUB/V+**  
[MAXIM](#)

RFQ



**MAX16917BGEE/V+T**  
IC PROT USB2.0 VBUS QSOP  
[Maxim Integrated](#)

RFQ



**MAX16917BGEE/V+CAT**  
[MAXIM](#)

RFQ



**MAX16915AUB+**  
IC IDEAL DIODE CONTROLLER 10UMAX  
[Maxim Integrated](#)

RFQ



**MAX16915**  
in stock  
[MAXIM](#)

RFQ

### Guess You May Looking For



**RNCF1206BKE11K8**  
RES SMD 11.8K OHM 0.1% 1/3W 1206  
[Stackpole Electronics Inc.](#)

RFQ



**RT0603BRC07390RL**  
RES SMD 390 OHM 0.1% 1/10W 0603  
[Yageo](#)

RFQ



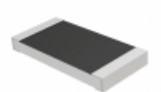
**RG2012N-224-D-T5**  
RES SMD 220K OHM 0.5% 1/8W 0805  
[Susumu](#)

RFQ



**RG2012N-2210-D-T5**  
RES SMD 221 OHM 0.5% 1/8W 0805  
[Susumu](#)

RFQ



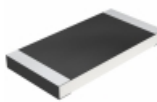
**RMCP2010FT3R90**  
RES SMD 3.9 OHM 1% 1W 2010  
[Stackpole Electronics Inc.](#)

RFQ



**RNCF2512DTC46K4**  
RES SMD 46.4K OHM 0.5% 1/2W 2512  
[Stackpole Electronics Inc.](#)

RFQ



**CRCW251286K6FKTG**  
RES SMD 86.6K OHM 1% 1W 2512  
[Vishay Dale](#)

RFQ



**RPC1210FT120R**  
RES SMD 120 OHM 1% 1/2W 1210  
[Stackpole Electronics Inc.](#)

RFQ



**RG3216P-3902-B-T5**  
RES SMD 39K OHM 0.1% 1/4W 1206  
[Susumu](#)

RFQ



**RNCF2512DTE2K70**  
RES SMD 2.7K OHM 0.5% 1/2W 2512  
[Stackpole Electronics Inc.](#)

RFQ