

XC6121F745ER-G



Torex Semiconductor Ltd.

IC WATCHDOG TIMER 6-USP

Lead free / RoHS Compliant

Integrated Circuits (ICs)

[XC6121F745ER-G.pdf](#)

Buy Now

Out Stock

0 pcs

Minimum:1

Multiples:100

Manufacturer lead time 10 weeks

Images are for reference only.

See Product Specifications for product details.

If you are interested to buy XC6121F745ER-G,Just Email us.

Sales@zeanoit.com

our sales team will reply you within 24 hours

Shopping Process

1

Confirm the product

2

submit the order

3

payment

4

wait for delivery

5

receive the goods

Specifications

| | |
|--------------------------------------|------------------------------|
| Voltage - Threshold: | 4.5V |
| Type: | Watchdog Circuit |
| Supplier Device Package: | 6-USPC (1.8x2) |
| Series: | - |
| Reset Timeout: | 800 ms Typical |
| Reset: | Active Low |
| Packaging: | Tape & Reel (TR) |
| Package / Case: | 6-UFDFN Exposed Pad |
| Output: | Open Drain or Open Collector |
| Operating Temperature: | -40°C ~ 85°C (TA) |
| Number of Voltages Monitored: | 1 |
| Mounting Type: | Surface Mount |

Related products



XC6121F744ER-G
IC WATCHDOG TIMER 6-USP
[Torex Semiconductor Ltd](#)

RFQ



XC6121F747MR-G
IC WATCHDOG TIMER SOT-25
[Torex Semiconductor Ltd](#)

RFQ



XC6121F745MR-G
IC WATCHDOG TIMER SOT-25
[Torex Semiconductor Ltd](#)

RFQ



XC6121F746ER-G
IC WATCHDOG TIMER 6-USP
[Torex Semiconductor Ltd](#)

RFQ



XC6121F743MR-G
IC WATCHDOG TIMER SOT-25
[Torex Semiconductor Ltd](#)

RFQ



XC6121F742MR-G
IC WATCHDOG TIMER SOT-25
[Torex Semiconductor Ltd](#)

RFQ



XC6121F743ER-G
IC WATCHDOG TIMER 6-USP
[Torex Semiconductor Ltd](#)

RFQ



XC6121F746MR-G
IC WATCHDOG TIMER SOT-25
[Torex Semiconductor Ltd](#)

RFQ



XC6121F747ER-G
IC WATCHDOG TIMER 6-USP
[Torex Semiconductor Ltd](#)

RFQ



XC6121F744MR-G
IC WATCHDOG TIMER SOT-25
[Torex Semiconductor Ltd](#)

RFQ

Guess You May Looking For



MCR10EZH2370
RES SMD 237 OHM 1% 1/8W 0805
[Rohm Semiconductor](#)

RFQ



RG1608P-6651-B-T1
RES SMD 6.65KOHM 0.1% 1/10W 0603
[Susumu](#)

RFQ



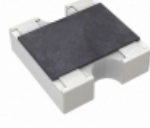
RG3216V-1211-B-T1
RES SMD 1.21K OHM 0.1% 1/4W 1206
[Susumu](#)

RFQ



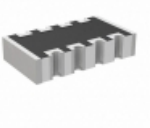
RG3216V-1470-C-T5
RES SMD 147 OHM 0.25% 1/4W 1206
[Susumu](#)

RFQ



YC162-FR-07100KL
RES ARRAY 2 RES 100K OHM 0606
[Yageo](#)

RFQ



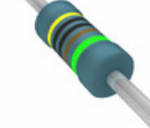
TC164-FR-07412KL
RES ARRAY 4 RES 412K OHM 1206
[Yageo](#)

RFQ



YC164-FR-07150KL
RES ARRAY 4 RES 150K OHM 1206
[Yageo](#)

RFQ



MBB02070C5001DC100
RES 5K OHM 0.6W 0.5% AXIAL
[Vishay BC Components](#)

RFQ



CMF5582R000FERE
RES 82 OHM 1/2W 1% AXIAL
[Vishay Dale](#)

RFQ



CMF552K6700FEEB
RES 2.67K OHM 1/2W 1% AXIAL
[Vishay Dale](#)

RFQ