

**RF 1B**



**Sanken Electric Co., Ltd.**  
 DIODE GEN PURP 800V 600MA AXIAL  
 Lead free / RoHS Compliant  
 Discrete Semiconductor Products

- [1.RF 1B.pdf](#)
- [2.RF 1B.pdf](#)

**Buy Now**

**Out Stock**  
**0 pcs**  
 Minimum:1  
 Multiples:100  
 Manufacturer lead time 10 weeks

Images are for reference only.  
 See Product Specifications for product details.  
 If you are interested to buy RF 1B,Just Email us.  
 Sales@zeanoit.com  
 our sales team will reply you within 24 hours

Shopping Process



**1**  
Confirm the product



**2**  
submit the order



**3**  
payment



**4**  
wait for delivery



**5**  
receive the goods

Specifications

<b>Voltage - Forward (Vf) (Max) @ If:</b>	2V @ 1A
<b>Voltage - DC Reverse (Vr) (Max):</b>	800V
<b>Supplier Device Package:</b>	-
<b>Speed:</b>	Fast Recovery = 200mA (Io)
<b>Series:</b>	-
<b>Reverse Recovery Time (trr):</b>	400ns
<b>Packaging:</b>	Bulk
<b>Package / Case:</b>	Axial
<b>Operating Temperature - Junction:</b>	-40°C ~ 150°C
<b>Mounting Type:</b>	Through Hole
<b>Diode Type:</b>	Standard
<b>Current - Reverse Leakage @ Vr:</b>	10µA @ 800V
<b>Current - Average Rectified (Io):</b>	600mA
<b>Capacitance @ Vr, F:</b>	-

Related products



**SD101CWS-G3-18**  
 DIODE SCHOTTKY 50V 30MA SOD323  
[Vishay Semiconductor Diodes Division](#)

RFQ



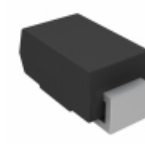
**RF 1BV**  
 DIODE GEN PURP 800V 600MA AXIAL  
[Sanken](#)

RFQ



**R9G22809AS00**  
 DIODE FAST REC R9G 900A 2800V  
[Powerex Inc.](#)

RFQ



**BYG10J-E3/TR3**  
 DIODE AVALANCHE 600V 1.5A  
[Vishay Semiconductor Diodes Division](#)

RFQ



**RF 1BV1**  
 DIODE GEN PURP 800V 600MA AXIAL  
[Sanken](#)

RFQ



**SRP100D-E3/73**  
 DIODE GEN PURP 200V 1A DO204AL  
[Vishay Semiconductor Diodes Division](#)

RFQ



**RF 1AV**  
 DIODE GEN PURP 600V 600MA AXIAL  
[Sanken](#)

RFQ



**RF 1AV1**  
 DIODE GEN PURP 600V 600MA AXIAL  
[Sanken](#)

RFQ



**1N4007L-T**  
 DIODE GEN PURP 1KV 1A DO41  
[Diodes Incorporated](#)

RFQ



**RF 1A**  
 DIODE GEN PURP 600V 600MA AXIAL  
[Sanken](#)

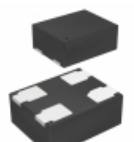
RFQ

Guess You May Looking For



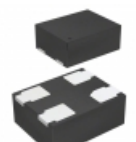
**SIT1602BC-73-18S-74.176000E**  
 -20 TO 70C, 2016, 50PPM, 1.8V, 7  
[SITIME](#)

RFQ



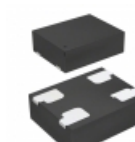
**SIT1602BC-71-18N-40.500000E**  
 -20 TO 70C, 2016, 20PPM, 1.8V, 4  
[SITIME](#)

RFQ



**SIT1602BC-72-28S-32.768000E**  
 -20 TO 70C, 2016, 25PPM, 2.8V, 3  
[SITIME](#)

RFQ



**SIT1602AC-12-18S-33.333330D**  
 OSC XO 1.8V 33.33333MHZ ST  
[SITIME](#)

RFQ



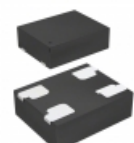
**SIT1602BI-71-28E-65.000000D**  
 -40 TO 85C, 2016, 20PPM, 2.8V, 6  
[SITIME](#)

RFQ



**SIT1602BC-32-33S-66.660000T**  
 -20 TO 70C, 5032, 25PPM, 3.3V, 6  
[SITIME](#)

RFQ



**SIT1602BI-12-33S-54.000000D**  
 -40 TO 85C, 2520, 25PPM, 3.3V, 5  
[SITIME](#)

RFQ



**SIT1602BI-31-28N-62.500000Y**  
 -40 TO 85C, 5032, 20PPM, 2.8V, 6  
[SITIME](#)

RFQ



**SIT1602BI-32-33S-26.000000Y**  
 -40 TO 85C, 5032, 25PPM, 3.3V, 2  
[SITIME](#)

RFQ



**SIT1602BC-73-30E-30.000000G**  
 -20 TO 70C, 2016, 50PPM, 3.0V, 3  
[SITIME](#)

RFQ