

## TOP222GN-TL



### Power Integrations

IC OFFLINE SWIT PWM OCP HV 8SMD

Lead free / RoHS Compliant

Integrated Circuits (ICs)

[TOP222GN-TL.pdf](#)

**Buy Now**

**Out Stock**

**0 pcs**

Minimum:1

Multiples:100

Manufacturer lead time 10 weeks

We can supply Power Integrations TOP222GN-TL, use the request quote form to request TOP222GN-TL price, Power Integrations Datasheet PDF and lead time. Zeanoit.com is a professional electronic components distributor. With 3+ Million line items of available electronic components can ship in short lead-time, over 250 thousand part numbers of electronic components in stock for immediately delivery, which may include part number TOP222GN-TL. The price and lead time for TOP222GN-TL depending on the quantity required, availability and warehouse location.

## Shopping Process

**1**

**Confirm the product**

**2**

**submit the order**

**3**

**payment**

**4**

**wait for delivery**

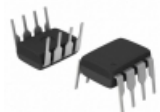
**5**

**receive the goods**

## Specifications

<b>Voltage - Supply (Vcc/Vdd):</b>	-
<b>Voltage - Breakdown:</b>	700V
<b>Topology:</b>	Boost, Buck, Flyback, Forward
<b>Supplier Device Package:</b>	8-SMD
<b>Series:</b>	TOPSwitch®-II
<b>Power (Watts):</b>	15W
<b>Packaging:</b>	Tape & Reel (TR)
<b>Package / Case:</b>	8-SMD, Gull Wing
<b>Output Isolation:</b>	Isolated
<b>Operating Temperature:</b>	-40°C ~ 150°C (TJ)
<b>Mounting Type:</b>	Surface Mount
<b>Internal Switch(s):</b>	Yes
<b>Frequency - Switching:</b>	100kHz
<b>Fault Protection:</b>	Current Limiting, Over Temperature
<b>Duty Cycle:</b>	67%
<b>Control Features:</b>	-

## Related products



**TOP222PN**  
IC OFFLINE SWIT PWM OCP HV 8DIP  
[Power Integrations](#)

RFQ



**TOP222GN**  
IC OFFLINE SWIT PWM OCP HV 8SMD  
[Power Integrations](#)

RFQ



**TOP222NY**  
[POWER](#)

RFQ



**TOP222G-TL**  
IC OFFLINE SWIT PWM OCP HV 8SMD  
[Power Integrations](#)

RFQ



**TOP221YN**  
IC OFFLINE SWIT PWM OCP HV TO220  
[Power Integrations](#)

RFQ



**TOP222YN**  
IC OFFLINE SWIT PWM OCP HV TO220  
[Power Integrations](#)

RFQ



**TOP222G**  
IC OFFLINE SWIT PWM OCP HV 8SMD  
[Power Integrations](#)

RFQ



**TOP222Y**  
IC OFFLINE SWIT PWM OCP HV TO220  
[Power Integrations](#)

RFQ



**TOP222P**  
IC OFFLINE SWIT PWM OCP HV 8DIP  
[Power Integrations](#)

RFQ



**TOP221Y**  
IC OFFLINE SWIT PWM OCP HV TO220  
[Power Integrations](#)

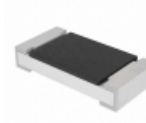
RFQ

## Guess You May Looking For



**KTR25JZPJ115**  
RES SMD 1.1M OHM 5% 1/3W 1210  
[Rohm Semiconductor](#)

RFQ



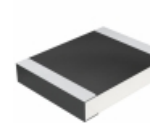
**CRCW12062R80FKEAHP**  
RES SMD 2.8 OHM 1% 3/4W 1206  
[Vishay Dale](#)

RFQ



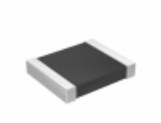
**RNCF1206DKE5K36**  
RES SMD 5.36K OHM 0.5% 1/4W 1206  
[Stackpole Electronics Inc.](#)

RFQ



**CRCW12101K13FKEAHP**  
RES SMD 1.13K OHM 1% 3/4W 1210  
[Vishay Dale](#)

RFQ



**RT1210DRD07348RL**  
RES SMD 348 OHM 0.5% 1/4W 1210  
[Yageo](#)

RFQ



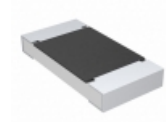
**RNCF0402BKE75R0**  
RES SMD 75 OHM 0.1% 1/16W 0402  
[Stackpole Electronics Inc.](#)

RFQ



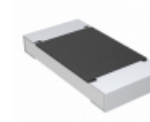
**RNCF0402BKE432R**  
RES SMD 432 OHM 0.1% 1/16W 0402  
[Stackpole Electronics Inc.](#)

RFQ



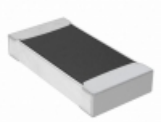
**CRCW20101K10FKTF**  
RES SMD 1.1K OHM 1% 3/4W 2010  
[Vishay Dale](#)

RFQ



**CRCW201021R5FKTF**  
RES SMD 21.5 OHM 1% 3/4W 2010  
[Vishay Dale](#)

RFQ



**RNCF1206CKC42K2**  
RES SMD 42.2KOHM 0.25% 1/4W 1206  
[Stackpole Electronics Inc.](#)

RFQ