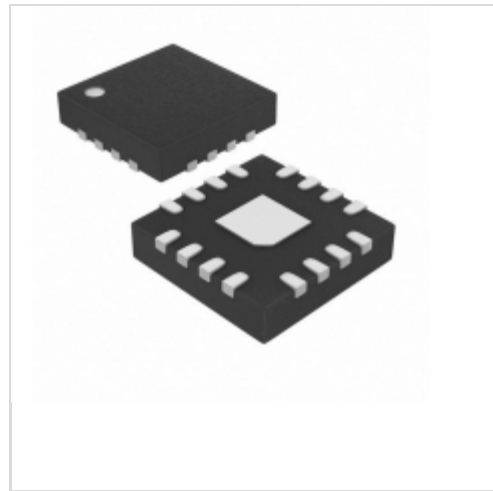


**MAX6887KETE+**



**Maxim Integrated**  
IC SUPERVISOR HEX 16-TQFN  
Lead free / RoHS Compliant  
Integrated Circuits (ICs)

- 1.MAX6887KETE+.pdf
- 2.MAX6887KETE+.pdf

**Buy Now**

**Out Stock**  
**0 pcs**  
Minimum:1  
Multiples:100  
Manufacturer lead time 10 weeks

part#MAX6887KETE+ is available, see description of MAX6887KETE+ as below .  
use the request quote form to request MAX6887KETE+ price and lead time.  
Buy Electronic Components at zeanoit.com .we are an independent distributor of electronic components with extensive inventory in stock.  
The price and lead time for MAX6887KETE+ depending on the quantity required, availability and warehouse location.Contact us today and our sales team will send you quotation soon.  
Email: sales@zeanoit.com

Shopping Process

**1**

**Confirm the product**

**2**

**submit the order**

**3**

**payment**

**4**

**wait for delivery**

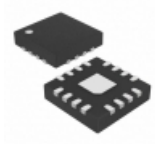
**5**

**receive the goods**

Specifications

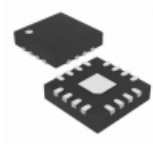
<b>Voltage - Threshold:</b>	6 Selectable Threshold Combinations
<b>Type:</b>	Multi-Voltage Supervisor
<b>Supplier Device Package:</b>	16-TQFN (5x5)
<b>Series:</b>	-
<b>Reset Timeout:</b>	180 ms Minimum
<b>Reset:</b>	Active Low
<b>Packaging:</b>	Tube
<b>Package / Case:</b>	16-WQFN Exposed Pad
<b>Output:</b>	Open Drain or Open Collector
<b>Operating Temperature:</b>	-40°C ~ 85°C (TA)
<b>Number of Voltages Monitored:</b>	6
<b>Mounting Type:</b>	Surface Mount

Related products



**MAX6887IETE+**  
IC SUPERVISOR HEX 16-TQFN  
[Maxim Integrated](#)

RFQ



**MAX6887JETE+**  
IC SUPERVISOR HEX 16-TQFN  
[Maxim Integrated](#)

RFQ



**MAX6887LETE**  
in stock  
[MAXIM](#)

RFQ



**MAX6887OETE**  
in stock  
[MAXIM](#)

RFQ



**MAX6887JETE**  
in stock  
[MAXIM](#)

RFQ



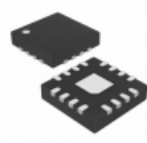
**MAX6887NETE**  
in stock  
[MAXIM](#)

RFQ



**MAX6887KETE**  
in stock  
[MAXIM](#)

RFQ



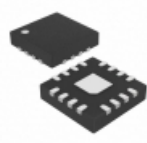
**MAX6887IETE+T**  
IC SUPERVISOR HEX 16-TQFN  
[Maxim Integrated](#)

RFQ



**MAX6887METE**  
in stock  
[MAXIM](#)

RFQ



**MAX6887METE+**  
IC SUPERVISOR HEX 16-TQFN  
[Maxim Integrated](#)

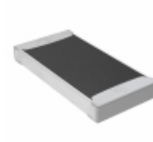
RFQ

Guess You May Looking For



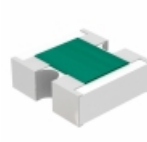
**9T04021A1373FBHF3**  
RES SMD 137K OHM 1% 1/16W 0402  
[Yageo](#)

RFQ



**TNPW201097R6BETF**  
RES SMD 97.6 OHM 0.1% 0.4W 2010  
[Vishay Dale](#)

RFQ



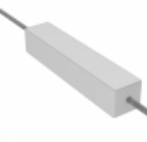
**MNR02MRAPJ100**  
RES ARRAY 2 RES 10 OHM 0404  
[Rohm Semiconductor](#)

RFQ



**WSBM8518L5000JT**  
RESISTOR SHUNT 0.0005 OHM 25W  
[Vishay Dale](#)

RFQ



**SQP10AJB-390R**  
RES 390 OHM 10W 5% AXIAL  
[Yageo](#)

RFQ



**23JR30E**  
RES 0.3 OHM 3W 5% AXIAL  
[Ohmite](#)

RFQ



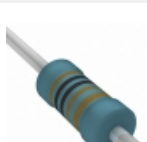
**CMF5571R500FHEB**  
RES 71.5 OHM 1/2W 1% AXIAL  
[Vishay Dale](#)

RFQ



**MBA02040C8250FCT00**  
RES 825 OHM 0.4W 1% AXIAL  
[Vishay BC Components](#)

RFQ



**MBB02070C1001FRP00**  
RES 1K OHM 0.6W 1% AXIAL  
[Vishay BC Components](#)

RFQ



**RN55C4122DRE6**  
RES 41.2K OHM 1/8W .5% AXIAL  
[Vishay Dale](#)

RFQ