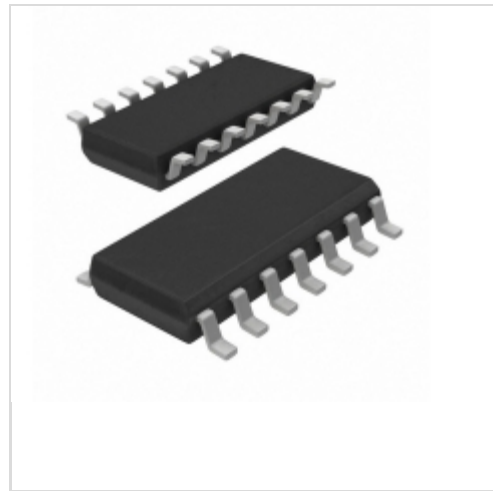


LB1836M-TLM-E



[AMI Semiconductor / ON Semiconductor](#)

IC MOTOR DRIVER PAR MFP14S

Lead free / RoHS Compliant

Integrated Circuits (ICs)

[1.LB1836M-TLM-E.pdf](#)

[2.LB1836M-TLM-E.pdf](#)

Buy Now

In Stock

779 pcs

Minimum:1

Multiples:100

Manufacturer lead time 10 weeks

PRICE

1 pcs	\$2.99
10 pcs	\$2.686
100 pcs	\$2.159
500 pcs	\$1.774

We can supply AMI Semiconductor / ON Semiconductor LB1836M-TLM-E, use the request quote form to request LB1836M-TLM-E price, AMI Semiconductor / ON Semiconductor Datasheet PDF and lead time. Zeanoit.com is a professional electronic components distributor. With 3+ Million line items of available electronic components can ship in short lead-time, over 250 thousand part numbers of electronic components in stock for immediately delivery, which may include part number LB1836M-TLM-E. The price and lead time for LB1836M-TLM-E depending on the quantity required, availability and warehouse location.

Shopping Process



Confirm the product



submit the order



payment



wait for delivery



receive the goods

Specifications

Voltage - Supply:	2.5 V ~ 9 V
Voltage - Load:	1.8 V ~ 9 V
Technology:	Bipolar
Supplier Device Package:	14-MFPS
Series:	-
Rds On (Typ):	-
Packaging:	Original-Reel®
Package / Case:	14-LSOP (0.173", 4.40mm Width)
Output Configuration:	Half Bridge (4)
Operating Temperature:	-40°C ~ 85°C (TA)
Mounting Type:	Surface Mount
Load Type:	Inductive
Interface:	Logic
Features:	-
Fault Protection:	Over Temperature
Current - Peak Output:	-
Current - Output / Channel:	1A
Applications:	DC Motors, General Purpose

Related products



LB1836M-TE-L

in stock

[SANYO](#)

RFQ



LB1836

[SANYO](#)

RFQ



LB1836M-MPB-E

IC MOTOR DRIVER PAR MFP14S

[ON Semiconductor](#)

RFQ



LB1836M-TRM-E

[SANYO](#)

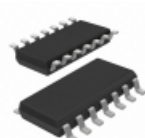
RFQ



LB1836ML

[SANYO](#)

RFQ

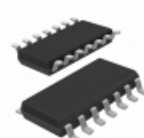


LB1836ML-MPB-E

IC MOTOR DRIVER

[ON Semiconductor](#)

RFQ



LB1836ML-TLM-E

IC MOTOR DRIVER 14SOIC

[ON Semiconductor](#)

RFQ



LB1834

[SANYO](#)

RFQ



LB1836MEVB

BOARD EVAL FOR LB1836M

[ON Semiconductor](#)

RFQ

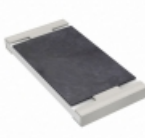


LB1833M-TRM-E

[SANYO](#)

RFQ

Guess You May Looking For

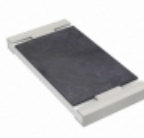


PE2512JKE070R047L

RES SMD 0.047 OHM 5% 1W 2512

[Yageo](#)

RFQ



PE2512JKF070R007L

RES SMD 0.007 OHM 5% 1W 2512

[Yageo](#)

RFQ

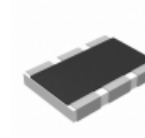


RNCF2010BTC23K7

RES SMD 23.7K OHM 0.1% 1/3W 2010

[Stackpole Electronics Inc.](#)

RFQ

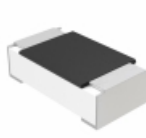


AA1218JK-071R3L

RES SMD 1.3 OHM 1W 1812 WIDE

[Yageo](#)

RFQ

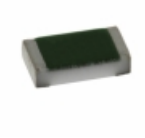


MCT06030D1501BP500

RES SMD 1.5K OHM 0.1% 1/10W 0603

[Vishay Beyschlag](#)

RFQ



TNPW060376R8BEEA

RES SMD 76.8 OHM 0.1% 1/10W 0603

[Vishay Dale](#)

RFQ



RT1206CRB0714R3L

RES SMD 14.3 OHM 0.25% 1/4W 1206

[Yageo](#)

RFQ



RNCF1210DTE2K10

RES SMD 2.1K OHM 0.5% 1/3W 1210

[Stackpole Electronics Inc.](#)

RFQ

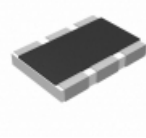


RT1206CRB0727K4L

RES SMD 27.4KOHM 0.25% 1/4W 1206

[Yageo](#)

RFQ



AA1218FK-0764R9L

RES SMD 64.9 OHM 1W 1812 WIDE

[Yageo](#)

RFQ

