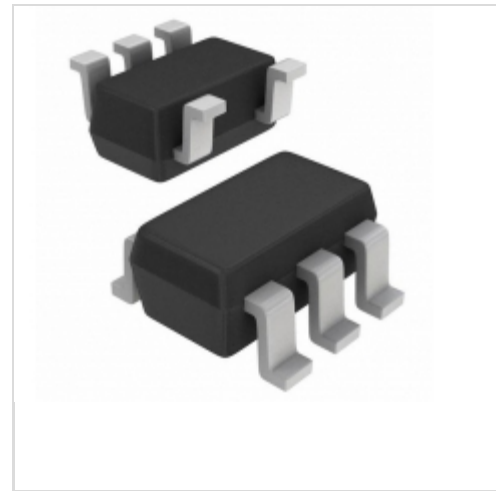


**ISL88012IH522Z-TK**

**Intersil**

IC VOLTAGE MONITOR DUAL SOT23-5

Lead free / RoHS Compliant

Integrated Circuits (ICs)

[ISL88012IH522Z-TK.pdf](#)
**Buy Now**

part#ISL88012IH522Z-TK is available, see description of ISL88012IH522Z-TK as below .

use the request quote form to request ISL88012IH522Z-TK price and lead time. Buy Electronic Components at zeanoit.com .we are an independent distributor of electronic components with extensive inventory in stock.

The price and lead time for ISL88012IH522Z-TK depending on the quantity required, availability and warehouse location.Contact us today and our sales team will send you quotation soon.

Email: sales@zeanoit.com

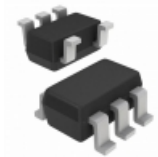
## Shopping Process

**1**
**Confirm the product**
**2**
**submit the order**
**3**
**payment**
**4**
**wait for delivery**
**5**
**receive the goods**

## Specifications

<b>Voltage - Threshold:</b>	2.19V, Adj
<b>Type:</b>	Multi-Voltage Supervisor
<b>Supplier Device Package:</b>	SOT-23-5
<b>Series:</b>	-
<b>Reset Timeout:</b>	140 ms Minimum
<b>Reset:</b>	Active High/Active Low
<b>Packaging:</b>	Tape & Reel (TR)
<b>Package / Case:</b>	SC-74A, SOT-753
<b>Output:</b>	Open Drain, Push-Pull
<b>Operating Temperature:</b>	-40°C ~ 85°C (TA)
<b>Number of Voltages Monitored:</b>	2
<b>Mounting Type:</b>	Surface Mount

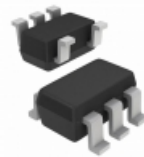
## Related products


**ISL88011IH546Z-TK**  
 IC VOLTAGE MONITOR DUAL SOT23-5  
[Intersil](#)

RFQ


**ISL88012EVAL1Z**  
 EVALUATION BOARD FOR ISL88012  
[Intersil](#)

RFQ


**ISL88012IH526Z-TK**  
 IC VOLTAGE MONITOR DUAL SOT23-5  
[Intersil](#)

RFQ

**ISL88011PI**  
[INTERSIL](#)

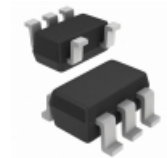
RFQ


**ISL88012IH523Z-TK**  
 IC VOLTAGE MONITOR DUAL SOT23-5  
[Intersil](#)

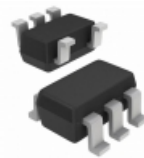
RFQ


**ISL88012IH523Z-T7A**  
 IC VOLTAGE MONITOR DUAL SOT23-5  
[Intersil](#)

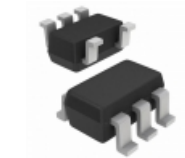
RFQ


**ISL88012IH526Z-T7A**  
 IC VOLTAGE MONITOR DUAL SOT23-5  
[Intersil](#)

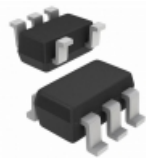
RFQ


**ISL88012IH529Z-T7A**  
 IC VOLTAGE MONITOR DUAL SOT23-5  
[Intersil](#)

RFQ


**ISL88011IH546Z-T7A**  
 IC VOLT MONITR SGL 4.64V SOT23-5  
[Intersil](#)

RFQ

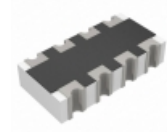

**ISL88012IH522Z-T7A**  
 IC VOLTAGE MONITOR DUAL SOT23-5  
[Intersil](#)

RFQ

## Guess You May Looking For


**9T04021A9091FBHF3**  
 RES SMD 9.09K OHM 1% 1/16W 0402  
[Yageo](#)

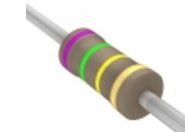
RFQ


**TC124-FR-072K32L**  
 RES ARRAY 4 RES 2.32K OHM 0804  
[Yageo](#)

RFQ


**PR01000101500JR500**  
 RES 150 OHM 1W 5% AXIAL  
[Vishay BC Components](#)

RFQ


**CFR-25JB-52-750K**  
 RES 750K OHM 1/4W 5% AXIAL  
[Yageo](#)

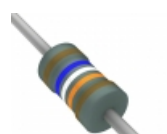
RFQ


**ERG-3SJ153**  
 RES 15K OHM 3W 5% AXIAL  
[Panasonic Electronic Components](#)

RFQ


**RLR07C1502GSB14**  
 RES 15K OHM 2% 1/4W AXIAL  
[Vishay Dale](#)

RFQ


**RNF14FTC169K**  
 RES 169K OHM 1/4W 1% AXIAL  
[Stackpole Electronics Inc.](#)

RFQ


**CMF0739R000GNR6**  
 RES 39 OHM 1/2W 2% AXIAL  
[Vishay Dale](#)

RFQ


**CMF60715R00FKEB70**  
 RES 715 OHM 1W 1% AXIAL  
[Vishay Dale](#)

RFQ


**MBA02040C1001DC100**  
 RES 1K OHM 0.4W 0.5% AXIAL  
[Vishay BC Components](#)

RFQ