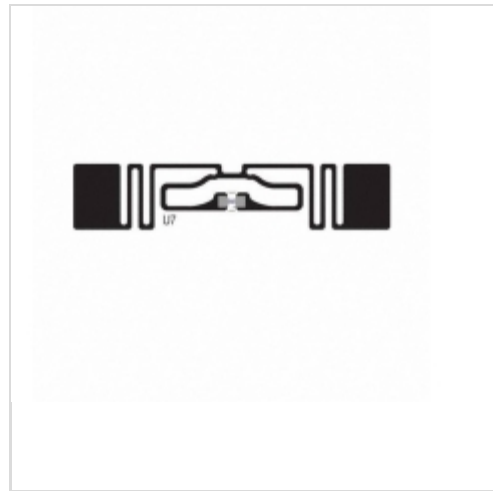


**100306**



**Avery Dennison**

RFID UHF LABEL AD-236U7  
Lead free / RoHS Compliant  
RF/IF and RFID

[100306.pdf](#)

**Buy Now**

Images are for reference only.

See Product Specifications for product details.

If you are interested to buy 100306,Just Email us.

Sales@zeanoit.com

our sales team will reply you within 24 hours

**Out Stock**

**0 pcs**

Minimum:1

Multiples:100

Manufacturer lead time 10 weeks

**PRICE**

1 pcs	\$0.61
25 pcs	\$0.404
100 pcs	\$0.328
500 pcs	\$0.225
1000 pcs	\$0.169
6250 pcs	\$0.145
12500 pcs	\$0.136

**Shopping Process**

**1**

**Confirm the product**

**2**

**submit the order**

**3**

**payment**

**4**

**wait for delivery**

**5**

**receive the goods**

**Specifications**

<b>Writable Memory:</b>	128b (EPC)
<b>Technology:</b>	Passive
<b>Style:</b>	Inlay
<b>Standards:</b>	EPC, ISO 18000-6
<b>Size / Dimension:</b>	70.00mm x 14.50mm
<b>Series:</b>	NXP UCODE 7
<b>Operating Temperature:</b>	-40°C ~ 85°C
<b>Memory Type:</b>	Read/Write
<b>Frequency:</b>	860MHz ~ 960MHz

**Related products**



**10030581-100LF**  
CONN EXPRESSCARD/54 MODULE TOP  
[Amphenol FCI](#)

**RFQ**



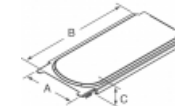
**10030581-200LF**  
CONN EXPRESSCARD/54 MODULE TOP  
[Amphenol FCI](#)

**RFQ**



**1003060000**  
CONN BASE SIDE ENTRY SZHQ  
[Weidmuller](#)

**RFQ**



**10030574-3101RLF**  
CONN EXPRESSCARD/34 MODULE  
BOTTM  
[Amphenol FCI](#)

**RFQ**



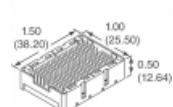
**10030626-001**  
ARRAY MALE 200POS 1.3MM GOLD  
[Amphenol FCI](#)

**RFQ**



**10030582-0000LF**  
CONN EXPRESSCARD/54 MODULE  
BOTTM  
[Amphenol FCI](#)

**RFQ**



**10030626-201**  
ARRAY MALE 200POS 1.3MM GOLD  
[Amphenol FCI](#)

**RFQ**



**100307**  
RFID INLAY LABEL UHF AD-320U7  
[Avery Dennison RFID](#)

**RFQ**



**10030582-2100LF**  
CONN EXPRESSCARD/54 MODULE  
BOTTM  
[Amphenol FCI](#)

**RFQ**



**10030626-001LF**  
ARRAY MALE 200POS 1.3MM GOLD  
[Amphenol FCI](#)

**RFQ**

**Guess You May Looking For**



**9T12062A7500BAHFT**  
RES SMD 750 OHM 0.1% 1/8W 1206  
[Yageo](#)

**RFQ**



**9T12062A5360BAHFT**  
RES SMD 536 OHM 0.1% 1/8W 1206  
[Yageo](#)

**RFQ**



**9T12062A2702BAHFT**  
RES SMD 27K OHM 0.1% 1/8W 1206  
[Yageo](#)

**RFQ**



**9T12062A28R7DBHFT**  
RES SMD 28.7 OHM 0.5% 1/8W 1206  
[Yageo](#)

**RFQ**



**9T12062A63R4DBHFT**  
RES SMD 63.4 OHM 0.5% 1/8W 1206  
[Yageo](#)

**RFQ**



**9T08052A4752CAHFT**  
RES SMD 47.5KOHM 0.25% 1/8W 0805  
[Yageo](#)

**RFQ**



**9T12062A34R8DBHFT**  
RES SMD 34.8 OHM 0.5% 1/8W 1206  
[Yageo](#)

**RFQ**



**9T08052A12R7BAHFT**  
RES SMD 12.7 OHM 0.1% 1/8W 0805  
[Yageo](#)

**RFQ**



**9T08052A5361CBHFT**  
RES SMD 5.36KOHM 0.25% 1/8W 0805  
[Yageo](#)

**RFQ**



**9T08052A3160CBHFT**  
RES SMD 316 OHM 0.25% 1/8W 0805  
[Yageo](#)

**RFQ**