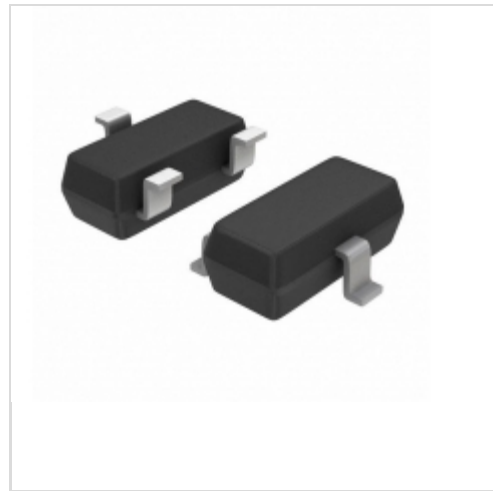


MAX809SN160T1

[AMI Semiconductor / ON Semiconductor](#)

IC MPU SUPERVISORY 1.6V SOT23
 Contains lead / RoHS non-compliant
 Integrated Circuits (ICs)

[MAX809SN160T1.pdf](#)
Buy Now

part#MAX809SN160T1 is available, see description of MAX809SN160T1 as below .
 use the request quote form to request MAX809SN160T1 price and lead time.
 Buy Electronic Components at zeanoit.com .we are an independent distributor of
 electronic components with extensive inventory in stock.
 The price and lead time for MAX809SN160T1 depending on the quantity required,
 availability and warehouse location.Contact us today and our sales team will send you
 quotation soon.
 Email: sales@zeanoit.com

Shopping Process

1

Confirm the product

2

submit the order

3

payment

4

wait for delivery

5

receive the goods

Specifications

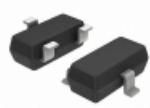
Voltage - Threshold:	1.6V
Type:	Simple Reset/Power-On Reset
Supplier Device Package:	SOT-23-3 (TO-236)
Series:	-
Reset Timeout:	140 ms Minimum
Reset:	Active Low
Packaging:	Tape & Reel (TR)
Package / Case:	TO-236-3, SC-59, SOT-23-3
Output:	Push-Pull, Totem Pole
Operating Temperature:	-40°C ~ 105°C (TJ)
Number of Voltages Monitored:	1
Mounting Type:	Surface Mount

Related products


MAX809SEUR-TG24

 in stock
[MAXIM](#)

RFQ


MAX809SN232T1

 IC MPU SUPERVISORY 2.32V SOT23
[ON Semiconductor](#)

RFQ


MAX809SN293D1T1G

 IC MPU RESET MON 2.93V SOT-23
[ON Semiconductor](#)

RFQ


MAX809SEXR+T

 IC RESET CIRC MPU SC70-3
[Maxim Integrated](#)

RFQ


MAX809SN293D2T1G

 IC MPU RESET MON 2.93V SOT-23
[ON Semiconductor](#)

RFQ


MAX809SN160T1G

 IC MPU SUPERVISORY 1.6V SOT23
[ON Semiconductor](#)

RFQ


MAX809SEXR-T10

 in stock
[MAXIM](#)

RFQ


MAX809SEXR-T

 in stock
[MAXIM](#)

RFQ


MAX809SN120T1G

 IC MPU RESET MON 1.20V SOT-23
[ON Semiconductor](#)

RFQ


MAX809SN232T1G

 IC MPU SUPERVISORY 2.32V SOT23
[ON Semiconductor](#)

RFQ

Guess You May Looking For


RG2012V-272-B-T1

 RES SMD 2.7K OHM 0.1% 1/8W 0805
[Susumu](#)

RFQ


9T04021A5760FBHF3

 RES SMD 576 OHM 1% 1/16W 0402
[Yageo](#)

RFQ


RG2012V-2051-B-T1

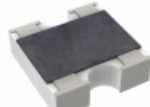
 RES SMD 2.05K OHM 0.1% 1/8W 0805
[Susumu](#)

RFQ


RG3216N-4120-B-T1

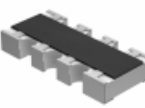
 RES SMD 412 OHM 0.1% 1/4W 1206
[Susumu](#)

RFQ


YC122-JR-07240KL

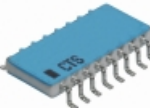
 RES ARRAY 2 RES 240K OHM 0404
[Yageo](#)

RFQ


CRA06S0833K90JTA

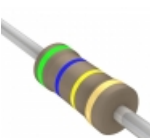
 RES ARRAY 4 RES 3.9K OHM 1206
[Vishay Dale](#)

RFQ


767163152GPTR13

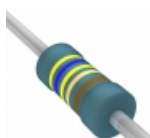
 RES ARRAY 8 RES 1.5K OHM 16SOIC
[CTS Resistor Products](#)

RFQ


CFR-12JR-52-560K

 RES 560K OHM 1/6W 5% AXIAL
[Yageo](#)

RFQ


MBB02070C4649FRP00

 RES 46.4 OHM 0.6W 1% AXIAL
[Vishay BC Components](#)

RFQ


MGM2JT470K

 RES 470K OHM 2W 5% AXIAL
[Stackpole Electronics Inc.](#)

RFQ