

UC2625DW


N/A
 IC MOTOR CONTROLLER PAR 28SOIC
 Lead free / RoHS Compliant
 Integrated Circuits (ICs)

Buy Now

- 1.Please confirm the Detail which include the part no.and the manufacturer of the products when ordering.
- 2.If you have bill of material(BOM) list require to quote.you could send to our email.
- 3.You can email us to change the order details before shipment.
- 4.Orders cannot be canceled after shipping the packages.

In Stock
40 pcs

Minimum:1

Multiples:1

Manufacturer lead time 10 weeks

PRICE

1 pcs	\$13.40
10 pcs	\$12.311
100 pcs	\$10.398
500 pcs	\$9.25
1000 pcs	\$8.484

Shopping Process

1
Confirm the product
2
submit the order
3
payment
4
wait for delivery
5
receive the goods

Specifications

Voltage - Supply:	10 V ~ 18 V
Voltage - Load:	-
Technology:	Power MOSFET, Power Darlington
Supplier Device Package:	28-SOIC
Step Resolution:	-
Series:	-
Packaging:	Tube
Package / Case:	28-SOIC (0.295", 7.50mm Width)
Output Configuration:	Pre-Driver - Half Bridge (3)
Operating Temperature:	-40°C ~ 105°C (TJ)
Mounting Type:	Surface Mount
Motor Type - Stepper:	-
Motor Type - AC, DC:	Brushless DC (BLDC)
Interface:	Parallel
Function:	Controller - Commutation, Direction Management
Current - Output:	-
Applications:	General Purpose

Related products



UC2610N
 IC SCHOTTKY DIODE BRIDGE 8-DIP
[N/A](#)

RFQ



UC2578N
 IC REG CTRLR BUCK 16DIP
[N/A](#)

RFQ



UC2625DWG4
 IC MOTOR CONTROLLER PAR 28SOIC
[N/A](#)

RFQ



UC2625MNEP
 IC MOTOR CONTROLLER PAR 28DIP
[N/A](#)

RFQ



UC2625EP
[TI](#)

RFQ



UC2610NG4
 IC SCHOTTKY DIODE BRIDGE 8-DIP
[N/A](#)

RFQ



UC2625DWTR
 IC MOTOR CONTROLLER PAR 28SOIC
[N/A](#)

RFQ



UC2625MDWREP
 IC MOTOR CONTROLLER PAR 28SOIC
[N/A](#)

RFQ



UC26
 CABLE CUTTER BLADE (CRIMP TOOLS)
[Panduit Corp](#)

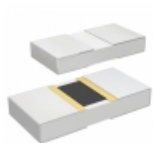
RFQ



UC2578NG4
 IC REG CTRLR BUCK 16DIP
[N/A](#)

RFQ

Guess You May Looking For



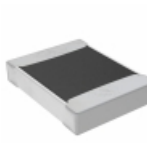
PHP00805H4320BST1
 RES SMD 432 OHM 0.1% 5/8W 0805
[Vishay Thin Film](#)

RFQ



PWR2615WR290JE
 RES SMD 0.29 OHM 5% 1W 2615
[Bourns Inc.](#)

RFQ



TNPW1210499RBEEN
 RES SMD 499 OHM 0.1% 1/3W 1210
[Vishay Dale](#)

RFQ



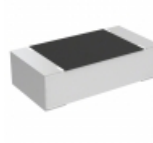
RP73D1J422RBTG
 RES SMD 422 OHM 0.1% 1/10W 0603
[TE Connectivity Passive Product](#)

RFQ



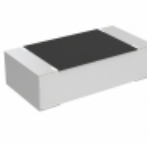
RG1608V-2211-W-T5
 RES SMD 2.21K OHM 1/10W 0603
[Susumu](#)

RFQ



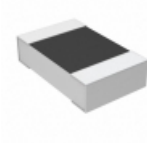
TNP0603158RBZEN00
 RES SMD 158 OHM 0.1% 1/10W 0603
[Vishay Dale](#)

RFQ



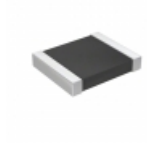
TNP06033K32BZEN00
 RES SMD 3.32KOHM 0.1% 1/10W 0603
[Vishay Dale](#)

RFQ



RN73C2A165KBTG
 RES SMD 165K OHM 0.1% 1/10W 0805
[TE Connectivity Passive Product](#)

RFQ



RT1210WRD0790K9L
 RES SMD 90.9KOHM 0.05% 1/4W 1210
[Yageo](#)

RFQ



RG1608V-391-P-T1
 RES SMD 390 OHM 0.02% 1/10W 0603
[Susumu](#)

RFQ

