

1600BL15B050E



Johanson Technology

BALUN WIMAX1600MHZ

Lead free by exemption / RoHS Compliant

RF/IF and RFID

[1600BL15B050E.pdf](#)

Buy Now

Out Stock

0 pcs

Minimum:1

Multiples:100

Manufacturer lead time 10 weeks

PRICE

4000 pcs	\$0.255
8000 pcs	\$0.225
12000 pcs	\$0.218

We can supply Johanson Technology 1600BL15B050E, use the request quote form to request 1600BL15B050E pirce, Johanson Technology Datasheet PDF and lead time.Zeanoit.com is a professional electronic components distributor. With 3+ Million line items of available electronic components can ship in short lead-time, over 250 thousand part numbers of electronic components in stock for immediately delivery, which may include part number 1600BL15B050E.The price and lead time for 1600BL15B050E depending on the quantity required, availability and warehouse location.

Shopping Process

1

Confirm the product

2

submit the order

3

payment

4

wait for delivery

5

receive the goods

Specifications

Series:	1600
Return Loss (Min):	9.5dB
Phase Difference:	180° ±10
Packaging:	Tape & Reel (TR)
Package / Case:	0805 (2012 Metric)
Mounting Type:	Surface Mount
Insertion Loss (Max):	1.0dB
Impedance - Unbalanced/Balanced:	50 / 50 Ohm
Frequency Range:	1.5GHz ~ 1.7GHz

Related products



1600BW

KNOB KNURL STRAIGHT 0.250" PHEN

[Davies Molding, LLC](#)

RFQ



1600BL15B100E

BALUN WIMAX1600MHZ

[Johanson Technology Inc.](#)

RFQ



1600APS12L

LINE FILTER 520VAC 1.6KA CHASS

[TE Connectivity Corcom Filters](#)

RFQ



1600BH

KNOB KNURL STRAIGHT 0.250" PHEN

[Davies Molding, LLC](#)

RFQ



1600APH12P

LINE FILTER 690VAC 1.6KA CHASS

[TE Connectivity Corcom Filters](#)

RFQ



1600BM

KNOB KNURL STRAIGHT 0.250" PHEN

[Davies Molding, LLC](#)

RFQ



1600AT45A0040E

ANTENNA OMNI DIREC 1.6GHZ SMD

[Johanson Technology Inc.](#)

RFQ



1600DC55

F

RFQ



1600APS12P

LINE FILTER 690VAC 1.6KA CHASS

[TE Connectivity Corcom Filters](#)

RFQ



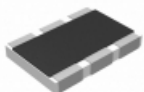
1600C

FIXED IND

[Murata Power Solutions Inc.](#)

RFQ

Guess You May Looking For

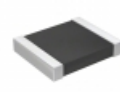


AA1218FK-072R05L

RES SMD 2.05 OHM 1W 1812 WIDE

[Yageo](#)

RFQ



RT1210CRE0768KL

RES SMD 68K OHM 0.25% 1/4W 1210

[Yageo](#)

RFQ



RG3216N-1402-D-T5

RES SMD 14K OHM 0.5% 1/4W 1206

[Susumu](#)

RFQ



RG3216N-1541-D-T5

RES SMD 1.54K OHM 0.5% 1/4W 1206

[Susumu](#)

RFQ



RG3216N-1693-D-T5

RES SMD 169K OHM 0.5% 1/4W 1206

[Susumu](#)

RFQ

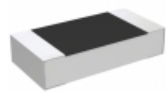


RNCF0805BTT6K81

RES SMD 6.81K OHM 0.1% 1/8W 0805

[Stackpole Electronics Inc.](#)

RFQ

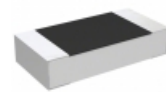


CPF1206B47RE1

RES SMD 47 OHM 0.1% 1/8W 1206

[TE Connectivity Passive Product](#)

RFQ

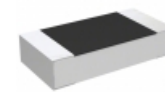


CPF1206B15R4E1

RES SMD 15.4 OHM 0.1% 1/8W 1206

[TE Connectivity Passive Product](#)

RFQ



CPF1206B422RE1

RES SMD 422 OHM 0.1% 1/8W 1206

[TE Connectivity Passive Product](#)

RFQ



RNCF2010BTE11K5

RES SMD 11.5K OHM 0.1% 1/3W 2010

[Stackpole Electronics Inc.](#)

RFQ