

AT17C128-10CI

Microchip Technology

IC SRL CONFIG EEPROM 128K 8LAP
 Contains lead / RoHS non-compliant
 Integrated Circuits (ICs)

We can supply AT17C128-10CI, use the request quote form to request AT17C128-10CI price and lead time. Zeano is a professional electronic components distributor. With 3+ Million line items of available electronic components can ship in short lead-time, over 250 thousand part numbers of electronic components in stock for immediately delivery, which may include part number AT17C128-10CI. The price and lead time for AT17C128-10CI depending on the quantity required and warehouse location. Contact us and our sales representative will provide you price. We look forward to work with you.

Shopping Process
1
Confirm the product
2
submit the order
3
payment
4
wait for delivery
5
receive the goods
Specifications

Voltage - Supply:	4.5 V ~ 5.5 V
Supplier Device Package:	8-LAP (6x6)
Series:	-
Programmable Type:	Serial EEPROM
Packaging:	Tube
Package / Case:	8-TDFN
Operating Temperature:	-40°C ~ 85°C
Memory Size:	128kb

Related products

AT17C020A-10JI

IC SERIAL CONFIG PROM 2M 20PLCC
[Microchip Technology](#)

RFQ

AT17C128-10CC

IC SRL CONFIG EEPROM 128K 8LAP
[Microchip Technology](#)

RFQ

AT17C128-10JI

in stock
[ATMEL](#)

RFQ

AT17C128-10JC

in stock
[ATMEL](#)

RFQ

AT17C020A-10JC

IC SERIAL CONFIG PROM 2M 20PLCC
[Microchip Technology](#)

RFQ

AT17C128-10JI

IC SER CONFIG PROM 128K 20PLCC
[Microchip Technology](#)

RFQ

AT17C128

in stock
[ATMEL](#)

RFQ

AT17C020A

in stock
[ATMEL](#)

RFQ

AT17C128-10NC

IC EEPROM FPGA 128KB 8-SOIC
[Microchip Technology](#)

RFQ

AT17C128-10JC

IC SER CONFIG PROM 128K 20PLCC
[Microchip Technology](#)

RFQ
Guess You May Looking For

AT1206DRE07162RL

RES SMD 162 OHM 0.5% 1/4W 1206
[Yageo](#)

RFQ

AT1206DRE0736K5L

RES SMD 36.5K OHM 0.5% 1/4W 1206
[Yageo](#)

RFQ

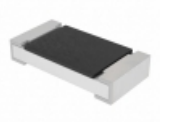
AT1206DRE07412RL

RES SMD 412 OHM 0.5% 1/4W 1206
[Yageo](#)

RFQ

CRGH2010F23R7

RES SMD 23.7 OHM 1% 1W 2010
[TE Connectivity Passive Product](#)

RFQ

CRCW12061R00FKECHP

RES SMD 1 OHM 1% 3/4W 1206
[Vishay Dale](#)

RFQ

RG1608P-1653-B-T5

RES SMD 165K OHM 0.1% 1/10W 0603
[Susumu](#)

RFQ

RG1608P-2103-B-T5

RES SMD 210K OHM 0.1% 1/10W 0603
[Susumu](#)

RFQ

RG1608P-2370-B-T5

RES SMD 237 OHM 0.1% 1/10W 0603
[Susumu](#)

RFQ

CAR0805-100RB1

RES SMD 100 OHM 0.1% 1/10W 0805
[Riedon](#)

RFQ

RT1210FRD0727R4L

RES SMD 27.4 OHM 1% 1/4W 1210
[Yageo](#)

RFQ