

AT27LV256A-90JC

Microchip Technology

IC OTP 256KBIT 90NS 32PLCC
 Contains lead / RoHS non-compliant
 Integrated Circuits (ICs)

[AT27LV256A-90JC.pdf](#)

Buy Now

We can supply Microchip Technology AT27LV256A-90JC, use the request quote form to request AT27LV256A-90JC price, Microchip Technology Datasheet PDF and lead time. Zeanoit.com is a professional electronic components distributor. With 3+ Million line items of available electronic components can ship in short lead-time, over 250 thousand part numbers of electronic components in stock for immediately delivery, which may include part number AT27LV256A-90JC. The price and lead time for AT27LV256A-90JC depending on the quantity required, availability and warehouse location.

Shopping Process

1

Confirm the product

2

submit the order

3

payment

4

wait for delivery

5

receive the goods

Specifications

Voltage - Supply:	3 V ~ 3.6 V, 4.5 V ~ 5.5 V
Supplier Device Package:	32-PLCC
Speed:	90ns
Series:	-
Packaging:	Tube
Package / Case:	32-LCC (J-Lead)
Operating Temperature:	0°C ~ 70°C (TC)
Memory Type:	Non-Volatile
Memory Size:	256Kb (32K x 8)
Memory Format:	EPROM
Interface:	Parallel

Related products


AT27LV256A-70TC
 IC OTP 256KBIT 70NS 28TSOP
[Microchip Technology](#)

RFQ



AT27LV256A-70RI
 in stock
[ATMEL](#)

RFQ



AT27LV256A-90
 in stock
[ATMEL](#)

RFQ



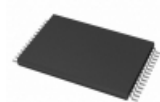
AT27LV256A-90RI
 IC OTP 256KBIT 90NS 28SOIC
[Microchip Technology](#)

RFQ



AT27LV256A-70RC
 IC OTP 256KBIT 70NS 28SOIC
[Microchip Technology](#)

RFQ



AT27LV256A-70TI
 IC OTP 256KBIT 70NS 28TSOP
[Microchip Technology](#)

RFQ



AT27LV256A-90JU
 IC OTP 256KBIT 90NS 32PLCC
[Microchip Technology](#)

RFQ



AT27LV256A-90JI
 in stock
[ATMEL](#)

RFQ



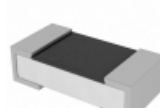
AT27LV256A-90RC
 IC OTP 256KBIT 90NS 28SOIC
[Microchip Technology](#)

RFQ



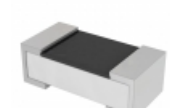
AT27LV256A-90JU-T
 90NS, PLCC, IND TEMP, GREEN
[Microchip Technology](#)

RFQ

Guess You May Looking For


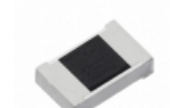
RC0100JR-070RL
 RES SMD 0.0 OHM JUMP 1/32W 01005
[Yageo](#)

RFQ



RC0402J330CS
 RES SMD 33 OHM 5% 1/32W 01005
[Samsung Electro-Mechanics America, Inc.](#)

RFQ



ERJ-PA3F6203V
 RES SMD 620K OHM 1% 1/4W 0603
[Panasonic Electronic Components](#)

RFQ



RE0805FRE07475KL
 RES SMD 475K OHM 1% 1/8W 0805
[Yageo](#)

RFQ



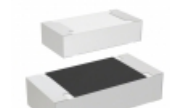
SR1206MR-0720KL
 RES SMD 20K OHM 20% 1/4W 1206
[Yageo](#)

RFQ



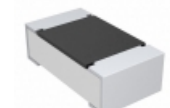
CRCW12061K21FKEB
 RES SMD 1.21K OHM 1% 1/4W 1206
[Vishay Dale](#)

RFQ



CRM1206-FX-5620ELF
 RES SMD 562 OHM 1% 1/2W 1206
[Bourns Inc.](#)

RFQ



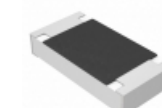
CRCW06031R37FNFTA
 RES SMD 1.37 OHM 1% 1/10W 0603
[Vishay Dale](#)

RFQ



CRCW080575R0JNEAHP
 RES SMD 75 OHM 5% 1/2W 0805
[Vishay Dale](#)

RFQ



ERJ-S08F12R1V
 RES SMD 12.1 OHM 1% 1/4W 1206
[Panasonic Electronic Components](#)

RFQ