

XC17S15AVO8I



Xilinx

IC PROM SER 5K 8-SOIC

Contains lead / RoHS non-compliant

Integrated Circuits (ICs)

[XC17S15AVO8I.pdf](#)

Buy Now

part#XC17S15AVO8I is available, see description of XC17S15AVO8I as below . use the request quote form to request XC17S15AVO8I price and lead time. Buy Electronic Components at zeanoit.com .we are an independent distributor of electronic components with extensive inventory in stock. The price and lead time for XC17S15AVO8I depending on the quantity required, availability and warehouse location.Contact us today and our sales team will send you quotation soon. Email: sales@zeanoit.com

Shopping Process

1

Confirm the product

2

submit the order

3

payment

4

wait for delivery

5

receive the goods

Specifications

Voltage - Supply:	3 V ~ 3.6 V
Supplier Device Package:	8-TSOP
Series:	-
Programmable Type:	OTP
Packaging:	Tube
Package / Case:	8-SOIC (0.154", 3.90mm Width)
Operating Temperature:	-40°C ~ 85°C
Memory Size:	150kb

Related products



XC17S20

Spartan and Spartan-XL Families Field Programmable Gate Arrays

[XILINX](#)

RFQ



XC17S15ASO20C

IC PROM SER 5000 C-TEMP 20-SOIC

[Xilinx Inc.](#)

RFQ



XC17S15APD8I

IC PROM SER 5000 I-TEMP 8-DIP

[Xilinx Inc.](#)

RFQ



XC17S15APD8C

IC PROM SER 5000 C-TEMP 8-DIP

[Xilinx Inc.](#)

RFQ



XC17S15ASO20I

IC PROM SER 5000 I-TEMP 20-SOIC

[Xilinx Inc.](#)

RFQ



XC17S200APC

[XILINX](#)

RFQ



XC17S15AVO8C

IC PROM SER 5K 8-SOIC

[Xilinx Inc.](#)

RFQ



XC17S15AVOG8C

IC PROM SERIAL 15K 8-SOIC

[Xilinx Inc.](#)

RFQ



XC17S15AVQ44I

Spartan-II/Spartan-IIIE Family OTP Configuration PROMs

[XILINX](#)

RFQ



XC17S15AVQ44C

Spartan-II/Spartan-IIIE Family OTP Configuration PROMs

[XILINX](#)

RFQ

Guess You May Looking For



AT1206DRE0768R1L

RES SMD 68.1 OHM 0.5% 1/4W 1206

[Yageo](#)

RFQ



RT0603CRD07324RL

RES SMD 324 OHM 0.25% 1/10W 0603

[Yageo](#)

RFQ



RT0603CRD07845RL

RES SMD 845 OHM 0.25% 1/10W 0603

[Yageo](#)

RFQ

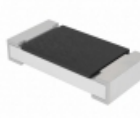


CRGH2010F20R5

RES SMD 20.5 OHM 1% 1W 2010

[TE Connectivity Passive Product](#)

RFQ



CRCW12064R99FKECHP

RES SMD 4.99 OHM 1% 3/4W 1206

[Vishay Dale](#)

RFQ



AT1206DRE07887KL

RES SMD 887K OHM 0.5% 1/4W 1206

[Yageo](#)

RFQ



AT1206DRE0788R7L

RES SMD 88.7 OHM 0.5% 1/4W 1206

[Yageo](#)

RFQ



RG1608P-1961-B-T5

RES SMD 1.96KOHM 0.1% 1/10W 0603

[Susumu](#)

RFQ



RG2012P-60R4-B-T5

RES SMD 60.4 OHM 0.1% 1/8W 0805

[Susumu](#)

RFQ



CAR0603-470KB1

RES SMD 470K OHM 0.1% 1/16W 0603

[Riedon](#)

RFQ