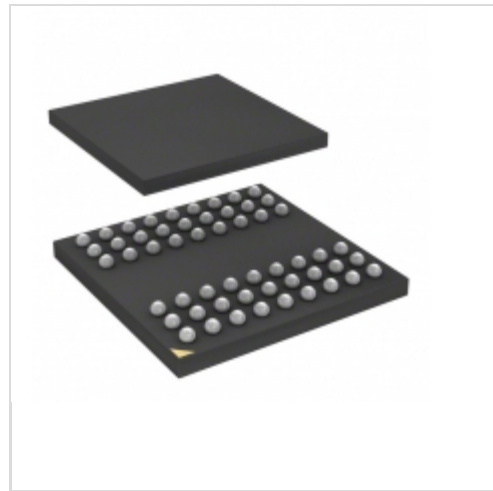


## IS42RM16160K-75BLI-TR



**ISSI (Integrated Silicon Solution, Inc.)**

IC SDRAM 256MBIT 133MHZ 54BGA

Lead free / RoHS Compliant

Integrated Circuits (ICs)

[IS42RM16160K-75BLI-TR.pdf](#)

**Buy Now**

**Out Stock**

**0 pcs**

Minimum:1

Multiples:100

Manufacturer lead time 10 weeks

We can supply ISSI (Integrated Silicon Solution, Inc.) IS42RM16160K-75BLI-TR, use the request quote form to request IS42RM16160K-75BLI-TR price, ISSI (Integrated Silicon Solution, Inc.) Datasheet PDF and lead time. Zeanoit.com is a professional electronic components distributor. With 3+ Million line items of available electronic components can ship in short lead-time, over 250 thousand part numbers of electronic components in stock for immediately delivery, which may include part number IS42RM16160K-75BLI-TR. The price and lead time for IS42RM16160K-75BLI-TR depending on the quantity required, availability and warehouse location.

### Shopping Process

**1**

**Confirm the product**

**2**

**submit the order**

**3**

**payment**

**4**

**wait for delivery**

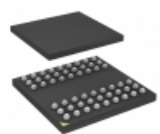
**5**

**receive the goods**

### Specifications

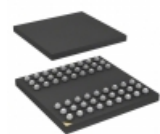
<b>Voltage - Supply:</b>	2.3 V ~ 3 V
<b>Supplier Device Package:</b>	54-TFBGA (8x8)
<b>Speed:</b>	133MHz
<b>Series:</b>	-
<b>Packaging:</b>	Tape & Reel (TR)
<b>Package / Case:</b>	54-TFBGA
<b>Operating Temperature:</b>	-40°C ~ 85°C (TA)
<b>Memory Type:</b>	Volatile
<b>Memory Size:</b>	256Mb (16M x 16)
<b>Memory Format:</b>	DRAM
<b>Interface:</b>	Parallel

### Related products



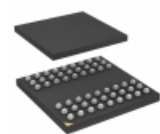
**IS42RM16160K-6BLI**  
IC SDRAM 256MBIT 166MHZ 54BGA  
[ISSI, Integrated Silicon Solution Inc](#)

**RFQ**



**IS42RM16200C-75BLI**  
IC SDRAM 32MBIT 133MHZ 54BGA  
[ISSI, Integrated Silicon Solution Inc](#)

**RFQ**



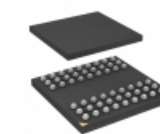
**IS42RM16160K-75BLI**  
IC SDRAM 256MBIT 133MHZ 54BGA  
[ISSI, Integrated Silicon Solution Inc](#)

**RFQ**



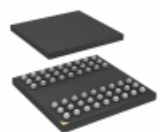
**IS42RM16160E-75BLI**  
IC SDRAM 256MBIT 133MHZ 54BGA  
[ISSI, Integrated Silicon Solution Inc](#)

**RFQ**



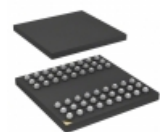
**IS42RM16160K-6BLI-TR**  
IC SDRAM 256MBIT 166MHZ 54BGA  
[ISSI, Integrated Silicon Solution Inc](#)

**RFQ**



**IS42RM16160E-75BLI-TR**  
IC SDRAM 256MBIT 133MHZ 54BGA  
[ISSI, Integrated Silicon Solution Inc](#)

**RFQ**



**IS42RM16800G-6BLI**  
IC SDRAM 128MBIT 166MHZ 54BGA  
[ISSI, Integrated Silicon Solution Inc](#)

**RFQ**



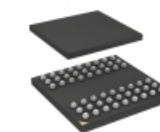
**IS42RM16200D-75BLI-TR**  
IC SDRAM 32MBIT 133MHZ 54BGA  
[ISSI, Integrated Silicon Solution Inc](#)

**RFQ**



**IS42RM16200D-75BLI**  
IC SDRAM 32MBIT 133MHZ 54BGA  
[ISSI, Integrated Silicon Solution Inc](#)

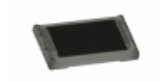
**RFQ**



**IS42RM16200C-75BLI-TR**  
IC SDRAM 32MBIT 133MHZ 54BGA  
[ISSI, Integrated Silicon Solution Inc](#)

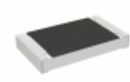
**RFQ**

### Guess You May Looking For



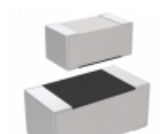
**ERJ-2RKf2203X**  
RES SMD 220K OHM 1% 1/10W 0402  
[Panasonic Electronic Components](#)

**RFQ**



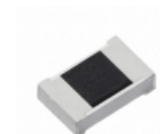
**RCS080547K0JNEA**  
RES SMD 47K OHM 5% 0.4W 0805  
[Vishay Dale](#)

**RFQ**



**RC0201JR-071R3L**  
RES SMD 1.3 OHM 5% 1/20W 0201  
[Yageo](#)

**RFQ**



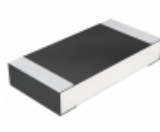
**ERJ-3BQf1R2V**  
RES SMD 1.2 OHM 1% 1/4W 0603  
[Panasonic Electronic Components](#)

**RFQ**



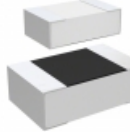
**CR0603-FX-61R9ELF**  
RES SMD 61.9 OHM 1% 1/10W 0603  
[Bourns Inc.](#)

**RFQ**



**CRCW1206402RFKEB**  
RES SMD 402 OHM 1% 1/4W 1206  
[Vishay Dale](#)

**RFQ**



**CRGV0805F174K**  
RES SMD 174K OHM 1% 1/8W 0805  
[TE Connectivity Passive Product](#)

**RFQ**



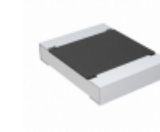
**RT0603DRE071K13L**  
RES SMD 1.13KOHM 0.5% 1/10W 0603  
[Yageo](#)

**RFQ**



**RT1206FRE0714K3L**  
RES SMD 14.3K OHM 1% 1/4W 1206  
[Yageo](#)

**RFQ**



**CRCW12101R37FKTA**  
RES SMD 1.37 OHM 1% 1/2W 1210  
[Vishay Dale](#)

**RFQ**