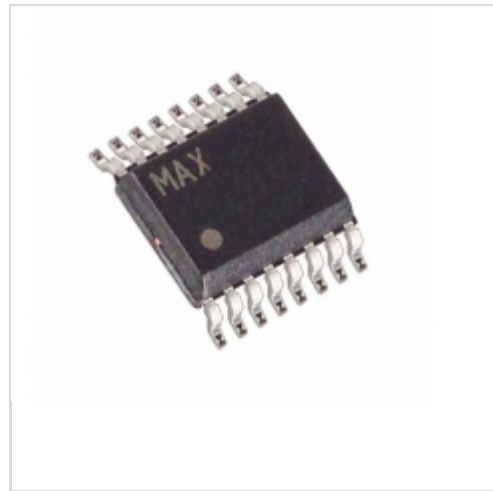


**MAX1761EEE-T**

**Maxim Integrated**

 IC REG CTRLR BUCK 16QSOP  
 Contains lead / RoHS non-compliant  
 Integrated Circuits (ICs)

1.MAX1761EEE-T.pdf

2.MAX1761EEE-T.pdf

part#MAX1761EEE-T is available, see description of MAX1761EEE-T as below .  
 use the request quote form to request MAX1761EEE-T price and lead time.  
 Buy Electronic Components at zeanoit.com .we are an independent distributor of  
 electronic components with extensive inventory in stock.  
 The price and lead time for MAX1761EEE-T depending on the quantity required,  
 availability and warehouse location.Contact us today and our sales team will send you  
 quotation soon.  
 Email: sales@zeanoit.com

**Shopping Process**
**1**
**Confirm the product**
**2**
**submit the order**
**3**
**payment**
**4**
**wait for delivery**
**5**
**receive the goods**
**Specifications**

<b>Voltage - Supply (Vcc/Vdd):</b>	4.5 V ~ 20 V
<b>Topology:</b>	Buck
<b>Synchronous Rectifier:</b>	Yes
<b>Supplier Device Package:</b>	16-QSOP
<b>Series:</b>	-
<b>Serial Interfaces:</b>	-
<b>Packaging:</b>	Tape & Reel (TR)
<b>Package / Case:</b>	16-SSOP (0.154", 3.90mm Width)
<b>Output Type:</b>	Transistor Driver
<b>Output Phases:</b>	1
<b>Output Configuration:</b>	Positive
<b>Operating Temperature:</b>	-40°C ~ 85°C (TA)
<b>Number of Outputs:</b>	2
<b>Function:</b>	Step-Down
<b>Frequency - Switching:</b>	250kHz, 350kHz
<b>Duty Cycle (Max):</b>	-
<b>Control Features:</b>	Enable
<b>Clock Sync:</b>	No

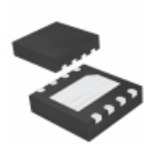
**Related products**

**MAX1762-MAX1791**  
 in stock  
 MAXIM

RFQ


**MAX17611CGTL+T**  
 MAXIM

RFQ


**MAX17620ATA+T**  
 IC REG BUCK ADJ 0.6A SYNC 8TDFN  
 Maxim Integrated

RFQ


**MAX1762**  
 in stock  
 MAXIM

RFQ


**MAX1760\_07**  
 in stock  
 MAXIM

RFQ


**MAX1761EEE**  
 in stock  
 MAXIM

RFQ


**MAX1761EEE+**  
 IC REG CTRLR BUCK 16QSOP  
 Maxim Integrated

RFQ


**MAX1761**  
 in stock  
 MAXIM

RFQ


**MAX1761EUP**  
 in stock  
 MAXIM

RFQ

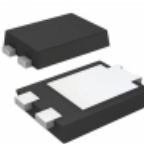

**MAX1761EEE-T**  
 in stock  
 MAXIM

RFQ

**Guess You May Looking For**

**DC1533A**  
 BOARD DEMO LTM8045  
 Linear Technology

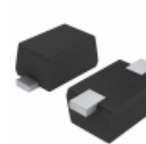
RFQ


**PDU620-13**  
 DIODE GEN PURP 200V 6A POWERDI5  
 Diodes Incorporated

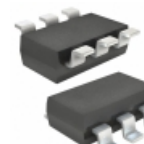
RFQ


**HSMS-280F-TR2G**  
 DIODE SCHOTTKY RF CC 70V SOT323  
 Broadcom Limited

RFQ


**RN142STE61**  
 DIODE PIN 60V 100MA EMD2 TR  
 Rohm Semiconductor

RFQ


**FDC3535**  
 MOSFET P-CH 80V 6-SSOT  
 Fairchild/ON Semiconductor

RFQ


**SI1400DL-T1-E3**  
 MOSFET N-CH 20V 1.6A SC70-6  
 Vishay Siliconix

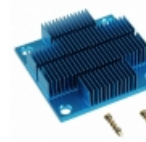
RFQ


**IRFR6215TRL**  
 MOSFET P-CH 150V 13A DPAK  
 Infineon Technologies

RFQ


**IRFH7190ATRPBF**  
 MOSFET N-CH 8-TDSON  
 Infineon Technologies

RFQ


**ATS-P2-195-C1-R0**  
 HEATSINK 40X40X12MM XCUT  
 Advanced Thermal Solutions Inc.

RFQ


**ATS-14B-190-C3-R0**  
 HEATSINK 45X45X25MM R-TAB T412  
 Advanced Thermal Solutions Inc.

RFQ