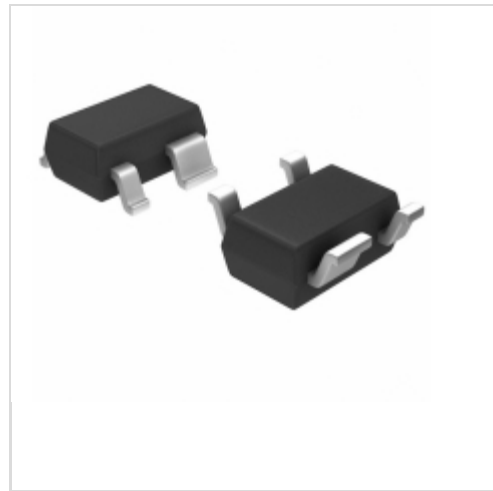


**S-80822CLNB-B6HT2G**



**SII Semiconductor Corporation**

IC VOLT DETECTOR 2.2V SC-82AB

Lead free / RoHS Compliant

Integrated Circuits (ICs)

[S-80822CLNB-B6HT2G.pdf](#)

**Buy Now**

**Out Stock**

**0 pcs**

Minimum:1

Multiples:100

Manufacturer lead time 10 weeks

We can supply SII Semiconductor Corporation S-80822CLNB-B6HT2G, use the request quote form to request S-80822CLNB-B6HT2G price, SII Semiconductor Corporation Datasheet PDF and lead time. Zeanoit.com is a professional electronic components distributor. With 3+ Million line items of available electronic components can ship in short lead-time, over 250 thousand part numbers of electronic components in stock for immediately delivery, which may include part number S-80822CLNB-B6HT2G. The price and lead time for S-80822CLNB-B6HT2G depending on the quantity required, availability and warehouse location.

Shopping Process

**1**

**Confirm the product**

**2**

**submit the order**

**3**

**payment**

**4**

**wait for delivery**

**5**

**receive the goods**

Specifications

<b>Voltage - Threshold:</b>	2.2V
<b>Type:</b>	Voltage Detector
<b>Supplier Device Package:</b>	SC-82AB
<b>Series:</b>	S-808xxC
<b>Reset Timeout:</b>	-
<b>Reset:</b>	Active Low
<b>Packaging:</b>	Tape & Reel (TR)
<b>Package / Case:</b>	SC-82A, SOT-343
<b>Output:</b>	Push-Pull, Totem Pole
<b>Operating Temperature:</b>	-40°C ~ 85°C (TA)
<b>Number of Voltages Monitored:</b>	1
<b>Mounting Type:</b>	Surface Mount

Related products



**S-80822CLUA-B6HT2G**

IC VOLT DETECTOR 2.2V SOT89-3  
[SII Semiconductor Corporation](#)

RFQ



**S-80822CLNB-B6H-T2G**

[SEIKO](#)

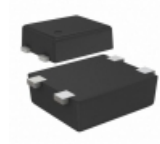
RFQ



**S-80822CLUA-B6HT2U**

IC VOLT DETECTOR 2.2V SOT89-3  
[SII Semiconductor Corporation](#)

RFQ



**S-80822CLPF-B6HTFG**

IC VOLT DETECTOR 2.2V SNT-4A  
[SII Semiconductor Corporation](#)

RFQ



**S-80822CLNB-B6H-T2**

[SEIKO](#)

RFQ



**S-80822CLMC-B6HT2U**

IC VOLT DETECTOR 2.2V SOT23-5  
[SII Semiconductor Corporation](#)

RFQ



**S-80822CLPF-B6HTFU**

IC VOLT DETECTOR 2.2V SNT-4A  
[SII Semiconductor Corporation](#)

RFQ



**S-80822CLNB-B6HT2U**

IC VOLT DETECTOR 2.2V SC-82AB  
[SII Semiconductor Corporation](#)

RFQ



**S-80822CLNB-B6H-G**

[SEIKO](#)

RFQ

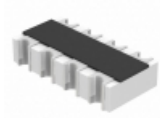


**S-80822CLMC-B6HT2G**

IC VOLT DETECTOR 2.2V SOT23-5  
[SII Semiconductor Corporation](#)

RFQ

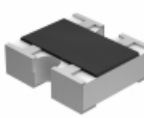
Guess You May Looking For



**EXB-N8V220JX**

RES ARRAY 4 RES 22 OHM 0804  
[Panasonic Electronic Components](#)

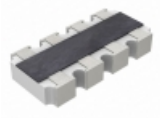
RFQ



**EXB-34V104JV**

RES ARRAY 2 RES 100K OHM 0606  
[Panasonic Electronic Components](#)

RFQ



**AF164-FR-07442KL**

RES ARRAY 4 RES 442K OHM 1206  
[Yageo](#)

RFQ



**YC324-FK-07169KL**

RES ARRAY 4 RES 169K OHM 2012  
[Yageo](#)

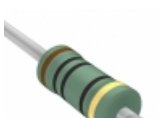
RFQ



**4608X-101-153**

RES ARRAY 7 RES 15K OHM 8SIP  
[Bourns Inc.](#)

RFQ



**FKN2WSJR-73-100R**

RES 100 OHM 2W 5% AXIAL  
[Yageo](#)

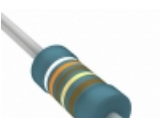
RFQ



**CFR25J82R**

RES 82 OHM 1/3W 5% AXIAL  
[TE Connectivity Passive Product](#)

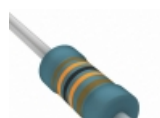
RFQ



**SFR25H0009319FR500**

RES 93.1 OHM 1/2W 1% AXIAL  
[Vishay BC Components](#)

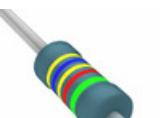
RFQ



**MRS25000C1303FC100**

RES 130K OHM 0.6W 1% AXIAL  
[Vishay BC Components](#)

RFQ



**MBB02070D4642DC100**

RES 46.4K OHM 0.6W 0.5% AXIAL  
[Vishay BC Components](#)

RFQ