

**BR93C56-WMN6TP**


**LAPIS Semiconductor**  
 IC EEPROM 4KBIT 2MHZ 8SO  
 Lead free / RoHS Compliant  
 Integrated Circuits (ICs)

[BR93C56-WMN6TP.pdf](#)

**Buy Now**

**Out Stock**

**0 pcs**

Minimum:1

Multiples:100

Manufacturer lead time 10 weeks

Images are for reference only.

See Product Specifications for product details.

If you are interested to buy BR93C56-WMN6TP,Just Email us.

Sales@zeanoit.com

our sales team will reply you within 24 hours

## Shopping Process

**1**

**Confirm the product**

**2**

**submit the order**

**3**

**payment**

**4**

**wait for delivery**

**5**

**receive the goods**

## Specifications

<b>Voltage - Supply:</b>	2.5 V ~ 5.5 V
<b>Supplier Device Package:</b>	8-SO
<b>Speed:</b>	2MHz
<b>Series:</b>	-
<b>Packaging:</b>	Tape & Reel (TR)
<b>Package / Case:</b>	8-SOIC (0.154", 3.90mm Width)
<b>Operating Temperature:</b>	-40°C ~ 85°C (TA)
<b>Memory Type:</b>	Non-Volatile
<b>Memory Size:</b>	4Kb (512 x 8)
<b>Memory Format:</b>	EEPROM
<b>Interface:</b>	Microwire, 3-Wire Serial

## Related products



**BR93C76-WDW6TP**  
 IC EEPROM 8KBIT 2MHZ 8TSSOP  
[Rohm Semiconductor](#)

RFQ



**BR93C86-WDS6TP**  
 IC EEPROM 16KBIT 2MHZ 8TSSOP  
[Rohm Semiconductor](#)

RFQ



**BR93C46-10TU-1.8**  
 IC EEPROM 1KBIT 2MHZ 8TSSOP  
[Rohm Semiconductor](#)

RFQ



**BR93C46-10SU-1.8**

RFQ



**BR93C56FV-WE2**  
[ROHM](#)

RFQ



**BR93C76-WMN6TP**  
 IC EEPROM 8KBIT 2MHZ 8SO  
[Rohm Semiconductor](#)

RFQ



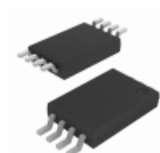
**BR93C46-WMN6TP**  
[ROHM](#)

RFQ



**BR93C46-10TU-2.7**  
 IC EEPROM 1KBIT 2MHZ 8TSSOP  
[Rohm Semiconductor](#)

RFQ



**BR93C76-WDS6TP**  
 IC EEPROM 8KBIT 2MHZ 8TSSOP  
[Rohm Semiconductor](#)

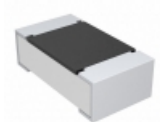
RFQ



**BR93C46-10SU1.8**  
[ROHM](#)

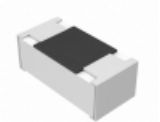
RFQ

## Guess You May Looking For



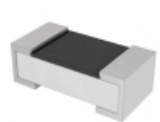
**CRCW060312K4FKEA**  
 RES SMD 12.4K OHM 1% 1/10W 0603  
[Vishay Dale](#)

RFQ



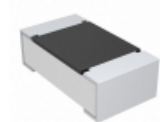
**ERJ-1GEF7683C**  
 RES SMD 768K OHM 1% 1/20W 0201  
[Panasonic Electronic Components](#)

RFQ



**AC0402FR-0780R6L**  
 RES SMD 80.6 OHM 1% 1/16W 0402  
[Yageo](#)

RFQ



**CRCW0603174KFKTA**  
 RES SMD 174K OHM 1% 1/10W 0603  
[Vishay Dale](#)

RFQ



**RT0402FRD073K92L**  
 RES SMD 3.92K OHM 1% 1/16W 0402  
[Yageo](#)

RFQ



**AT0603DRE0723R2L**  
 RES SMD 23.2 OHM 0.5% 1/10W 0603  
[Yageo](#)

RFQ



**CSR0805JKR680**  
 RES SMD 0.68 OHM 5% 1/4W 0805  
[Stackpole Electronics Inc.](#)

RFQ



**RNCF0805DTE48K7**  
 RES SMD 48.7K OHM 0.5% 1/8W 0805  
[Stackpole Electronics Inc.](#)

RFQ



**RNCF0402DTE1K74**  
 RES SMD 1.74KOHM 0.5% 1/16W 0402  
[Stackpole Electronics Inc.](#)

RFQ



**KTR10EZPF61R9**  
 RES SMD 61.9 OHM 1% 1/8W 0805  
[Rohm Semiconductor](#)

RFQ