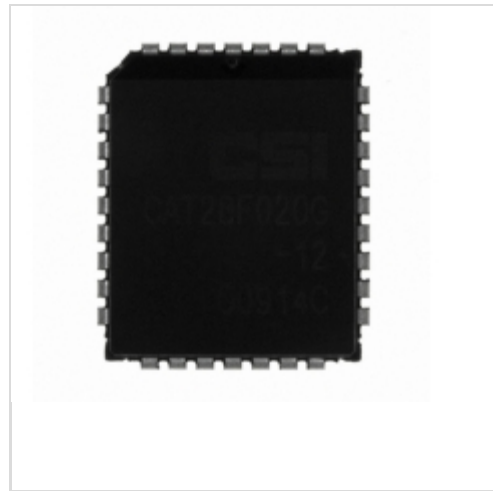


CAT28C16AGI12



[AMI Semiconductor / ON Semiconductor](#)

IC EEPROM 16KBIT 120NS 32PLCC

Lead free / RoHS Compliant

Integrated Circuits (ICs)

[CAT28C16AGI12.pdf](#)

Buy Now

Images are for reference only.

See Product Specifications for product details.

If you are interested to buy CAT28C16AGI12,Just Email us.

Sales@zeanoit.com

our sales team will reply you within 24 hours

Shopping Process

1

Confirm the product

2

submit the order

3

payment

4

wait for delivery

5

receive the goods

Specifications

Voltage - Supply:	4.5 V ~ 5.5 V
Supplier Device Package:	32-PLCC (11.43x13.97)
Speed:	120ns
Series:	-
Packaging:	Tube
Package / Case:	32-LCC (J-Lead)
Operating Temperature:	-40°C ~ 85°C (TA)
Memory Type:	Non-Volatile
Memory Size:	16Kb (2K x 8)
Memory Format:	EEPROM
Interface:	Parallel

Related products



CAT28C16AK-20-LE13

[CSI](#)

RFQ



CAT28C16AG-20T

IC EEPROM 16KBIT 200NS 32PLCC
[ON Semiconductor](#)

RFQ



CAT28C16AG-20

[CSI](#)

RFQ



CAT28C16AGI-20T

IC EEPROM 16KBIT 200NS 32PLCC
[ON Semiconductor](#)

RFQ



CAT28C16AGI20

IC EEPROM 16KBIT 200NS 32PLCC
[ON Semiconductor](#)

RFQ



CAT28C16AGI90

IC EEPROM 16KBIT 90NS 32PLCC
[ON Semiconductor](#)

RFQ



CAT28C16AK-20

[CAT](#)

RFQ



CAT28C16AG20

IC EEPROM 16KBIT 200NS 32PLCC
[ON Semiconductor](#)

RFQ



CAT28C16AJ-20

[CATALYST](#)

RFQ

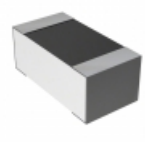


CAT28C16AGI-12T

IC EEPROM 16KBIT 120NS 32PLCC
[ON Semiconductor](#)

RFQ

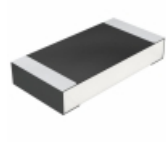
Guess You May Looking For



CPF0603B110KE1

RES SMD 110K OHM 0.1% 1/16W 0603
[TE Connectivity Passive Product](#)

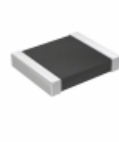
RFQ



CRCW12069R76FKEA

RES SMD 9.76 OHM 1% 1/4W 1206
[Vishay Dale](#)

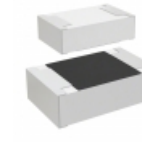
RFQ



RT1210DRE0711RL

RES SMD 11 OHM 0.5% 1/4W 1210
[Yageo](#)

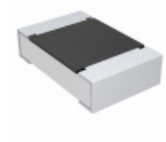
RFQ



CR0805-JW-202GLF

RES SMD 2K OHM 5% 1/8W 0805
[Bourns Inc.](#)

RFQ



CRCW080531K6FKEB

RES SMD 31.6K OHM 1% 1/8W 0805
[Vishay Dale](#)

RFQ



RT0402FRE0726K7L

RES SMD 26.7K OHM 1% 1/16W 0402
[Yageo](#)

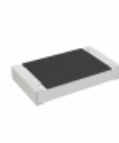
RFQ



RMCS0805FT39K2

RES SMD 39.2K OHM 1% 1/8W 0805
[Stackpole Electronics Inc.](#)

RFQ



RCS040224K3FKED

RES SMD 24.3K OHM 1% 1/5W 0402
[Vishay Dale](#)

RFQ



RT0603BRD073K61L

RES SMD 3.61KOHM 0.1% 1/10W 0603
[Yageo](#)

RFQ



RC0100FR-073R48L

RES SMD 3.48 OHM 1% 1/32W 01005
[Yageo](#)

RFQ