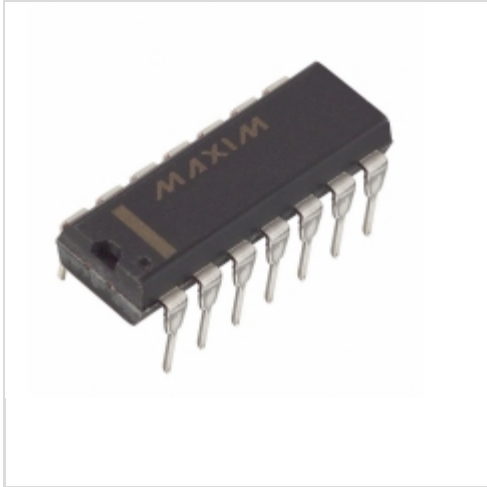


DS1222N

Maxim Integrated

IC BANKSWITCH CMOS IND 14-DIP
 Contains lead / RoHS non-compliant
 Integrated Circuits (ICs)

[DS1222N.pdf](#)

Buy Now

We can supply Maxim Integrated DS1222N, use the request quote form to request DS1222N price, Maxim Integrated Datasheet PDF and lead time. Zeanoit.com is a professional electronic components distributor. With 3+ Million line items of available electronic components can ship in short lead-time, over 250 thousand part numbers of electronic components in stock for immediately delivery, which may include part number DS1222N. The price and lead time for DS1222N depending on the quantity required, availability and warehouse location.

Shopping Process
1
Confirm the product
2
submit the order
3
payment
4
wait for delivery
5
receive the goods
Specifications

Voltage - Supply:	4.5 V ~ 5.5 V
Supplier Device Package:	14-PDIP
Series:	-
Packaging:	Tube
Package / Case:	14-DIP (0.300", 7.62mm)
Operating Temperature:	0°C ~ 70°C
Controller Type:	Static RAM (SRAM)

Related products


DS1222+
 IC BANKSWITCH CMOS 14-DIP
[Maxim Integrated](#)

RFQ


DS1221
 IC CTRLR/DECODER 4BIT 16-DIP
[Maxim Integrated](#)

RFQ


DS1222S+
 IC BANKSWITCH CMOS 16-SOIC
[Maxim Integrated](#)

RFQ


DS1225AB-150
[DALLAS](#)

RFQ


DS12250AD-200IND
 in stock
[DALLAS](#)

RFQ


DS1221SN
 IC CTRLR/DECODER 4BIT IN 16-SOIC
[Maxim Integrated](#)

RFQ


DS1225AB
 64k Nonvolatile SRAM
[DALLAS](#)

RFQ


DS1220Y-70IND
[DALLAS](#)

RFQ

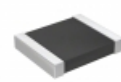

DS1225
 64K Nonvolatile SRAM
[DALLAS](#)

RFQ

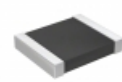

DS1221S
 IC CTRLR/DECODER 4BIT 16-SOIC
[Maxim Integrated](#)

RFQ
Guess You May Looking For

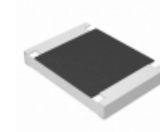

CRGH2010F332K
 RES SMD 332K OHM 1% 1W 2010
[TE Connectivity Passive Product](#)

RFQ


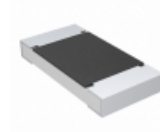
RT1210FRD07205RL
 RES SMD 205 OHM 1% 1/4W 1210
[Yageo](#)

RFQ


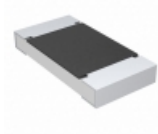
RT1210FRD07220RL
 RES SMD 220 OHM 1% 1/4W 1210
[Yageo](#)

RFQ


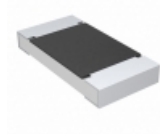
ERJ-S12J184U
 RES SMD 180K OHM 5% 3/4W 1812
[Panasonic Electronic Components](#)

RFQ


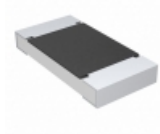
CRCW2010604KFKTF
 RES SMD 604K OHM 1% 3/4W 2010
[Vishay Dale](#)

RFQ


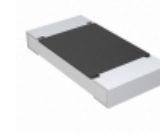
CRCW20109K10FKTF
 RES SMD 9.1K OHM 1% 3/4W 2010
[Vishay Dale](#)

RFQ


CRCW20109M76FKTF
 RES SMD 9.76M OHM 1% 3/4W 2010
[Vishay Dale](#)

RFQ


CRCW2010360RJNTF
 RES SMD 360 OHM 5% 3/4W 2010
[Vishay Dale](#)

RFQ


CRCW20106K80JNTF
 RES SMD 6.8K OHM 5% 3/4W 2010
[Vishay Dale](#)

RFQ


RNCW0402BTC10R0
 RES SMD 10 OHM 0.1% 1/16W 0402
[Stackpole Electronics Inc.](#)

RFQ