

MAX6865UK19D2L+T



[Maxim Integrated](#)

IC MPU SUPERVISOR SOT23-5

Lead free / RoHS Compliant

Integrated Circuits (ICs)

[1.MAX6865UK19D2L+T.pdf](#)

[2.MAX6865UK19D2L+T.pdf](#)

[Buy Now](#)

We can supply MAX6865UK19D2L+T, use the request quote form to request MAX6865UK19D2L+T price and lead time. Zeano is a professional electronic components distributor. With 3+ Million line items of available electronic components can ship in short lead-time, over 250 thousand part numbers of electronic components in stock for immediately delivery, which may include part number MAX6865UK19D2L+T. The price and lead time for MAX6865UK19D2L+T depending on the quantity required and warehouse location. Contact us and our sales representative will provide you price. We look forward to work with you.

Shopping Process



1
Confirm the product



2
submit the order



3
payment



4
wait for delivery



5
receive the goods

Specifications

Voltage - Threshold:	1.9V
Type:	Simple Reset/Power-On Reset
Supplier Device Package:	SOT-23-5
Series:	-
Reset Timeout:	40 ms Minimum
Reset:	Active High
Packaging:	Tape & Reel (TR)
Package / Case:	SC-74A, SOT-753
Output:	Push-Pull, Totem Pole
Operating Temperature:	-40°C ~ 85°C (TA)
Number of Voltages Monitored:	1
Mounting Type:	Surface Mount

Related products



MAX6865UK19D1L+T
IC MPU SUPERVISOR SOT23-5
[Maxim Integrated](#)

[RFQ](#)



MAX6865UK19D3L+T
IC MPU SUPERVISOR SOT23-5
[Maxim Integrated](#)

[RFQ](#)



MAX6865UK18D6S+T
IC MPU SUPERVISOR SOT23-5
[Maxim Integrated](#)

[RFQ](#)



MAX6865UK19D2S+T
IC MPU SUPERVISOR SOT23-5
[Maxim Integrated](#)

[RFQ](#)



MAX6865UK19D1S+T
IC MPU SUPERVISOR SOT23-5
[Maxim Integrated](#)

[RFQ](#)



MAX6865UK18D5S+T
IC MPU SUPERVISOR SOT23-5
[Maxim Integrated](#)

[RFQ](#)



MAX6865UK19D4S+T
IC MPU SUPERVISOR SOT23-5
[Maxim Integrated](#)

[RFQ](#)



MAX6865UK18D6L+T
IC MPU SUPERVISOR SOT23-5
[Maxim Integrated](#)

[RFQ](#)



MAX6865UK19D4L+T
IC MPU SUPERVISOR SOT23-5
[Maxim Integrated](#)

[RFQ](#)



MAX6865UK19D3S+T
IC MPU SUPERVISOR SOT23-5
[Maxim Integrated](#)

[RFQ](#)

Guess You May Looking For



9T06031A51R1BBHFT
RES SMD 51.1 OHM 0.1% 1/10W 0603
[Yageo](#)

[RFQ](#)



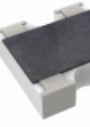
RG1005P-5360-P-T1
RES SMD 536 OHM 0.02% 1/16W 0402
[Susumu](#)

[RFQ](#)



RG1608N-133-C-T5
RES SMD 13K OHM 0.25% 1/10W 0603
[Susumu](#)

[RFQ](#)



AF162-JR-07330KL
RES ARRAY 2 RES 330K OHM 0606
[Yageo](#)

[RFQ](#)



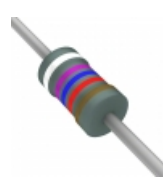
OJ5125E-R52
RES 5.1K OHM 1/8W 5% AXIAL
[Ohmite](#)

[RFQ](#)



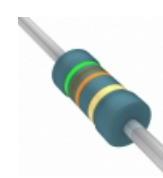
FW20A10R0JA
RES 10 OHM 2W 5% AXIAL
[Bourns Inc.](#)

[RFQ](#)



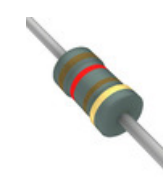
RNF12FTD97K6
RES 97.6K OHM 1/2W 1% AXIAL
[Stackpole Electronics Inc.](#)

[RFQ](#)



SFR2500005102JR500
RES 51K OHM 0.4W 5% AXIAL
[Vishay BC Components](#)

[RFQ](#)



RNF12JTD120R
RES 120 OHM 1/2W 5% AXIAL
[Stackpole Electronics Inc.](#)

[RFQ](#)



RN55C2262DR36
RES 22.6K OHM 1/8W .5% AXIAL
[Vishay Dale](#)

[RFQ](#)