

## MAX6383XR29D3+T



**Maxim Integrated**

IC MPU/RESET CIRC 2.93V SC70-3

Lead free / RoHS Compliant

Integrated Circuits (ICs)

[1.MAX6383XR29D3+T.pdf](#)

[2.MAX6383XR29D3+T.pdf](#)

**Buy Now**

**In Stock**

**970 pcs**

Minimum:1

Multiples:100

Manufacturer lead time 10 weeks

### PRICE

1 pcs	\$5.89
10 pcs	\$5.56
25 pcs	\$4.45
50 pcs	\$4.22
100 pcs	\$3.89
250 pcs	\$3.69
500 pcs	\$2.78

We can supply MAX6383XR29D3+T, use the request quote form to request MAX6383XR29D3+T price and lead time. Zeano is a professional electronic components distributor. With 3+ Million line items of available electronic components can ship in short lead-time, over 250 thousand part numbers of electronic components in stock for immediately delivery, which may include part number MAX6383XR29D3+T. The price and lead time for MAX6383XR29D3+T depending on the quantity required and warehouse location. Contact us and our sales representative will provide you price. We look forward to work with you.

## Shopping Process

**1**

**Confirm the product**

**2**

**submit the order**

**3**

**payment**

**4**

**wait for delivery**

**5**

**receive the goods**

## Specifications

<b>Voltage - Threshold:</b>	2.93V
<b>Type:</b>	Simple Reset/Power-On Reset
<b>Supplier Device Package:</b>	SC-70-3
<b>Series:</b>	-
<b>Reset Timeout:</b>	140 ms Minimum
<b>Reset:</b>	Active Low
<b>Packaging:</b>	Cut Tape (CT)
<b>Package / Case:</b>	SC-70, SOT-323
<b>Output:</b>	Open Drain or Open Collector
<b>Operating Temperature:</b>	-40°C ~ 125°C (TA)
<b>Number of Voltages Monitored:</b>	1
<b>Mounting Type:</b>	Surface Mount

## Related products



**MAX6383XR30D2+T**

IC MPU/RESET CIRC 3.00V SC70-3

[Maxim Integrated](#)

RFQ



**MAX6383XR31D1-T**

IC MPU/RESET CIRC 3.08V SC70-3

[Maxim Integrated](#)

RFQ

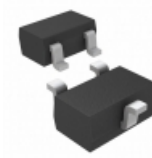


**MAX6383XR29D1+T**

IC MPU/RESET CIRC 2.93V SC70-3

[Maxim Integrated](#)

RFQ



**MAX6383XR29D1+**

IC MPU/RESET CIRC 2.93V SC70-3

[Maxim Integrated](#)

RFQ



**MAX6383XR29D5-T**

IC MPU/RESET CIRC 2.93V SC70-3

[Maxim Integrated](#)

RFQ



**MAX6383XR30D3+T**

IC MPU/RESET CIRC 3.00V SC70-3

[Maxim Integrated](#)

RFQ



**MAX6383XR26D7-T**

IC MPU/RESET CIRC 2.63V SC70-3

[Maxim Integrated](#)

RFQ

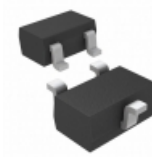


**MAX6383XR31D2+T**

IC MPU/RESET CIRC 3.10V SC70-3

[Maxim Integrated](#)

RFQ



**MAX6383XR29D2+T**

IC MPU/RESET CIRC 2.93V SC70-3

[Maxim Integrated](#)

RFQ



**MAX6383XR28D2+T**

IC MPU/RESET CIRC 2.80V SC70-3

[Maxim Integrated](#)

RFQ

## Guess You May Looking For



**RG1608N-7871-B-T1**

RES SMD 7.87KOHM 0.1% 1/10W 0603

[Susumu](#)

RFQ

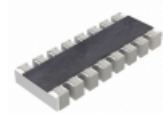


**RG2012P-273-C-T5**

RES SMD 27K OHM 0.25% 1/8W 0805

[Susumu](#)

RFQ



**YC248-FR-0714K7L**

RES ARRAY 8 RES 14.7K OHM 1606

[Yageo](#)

RFQ

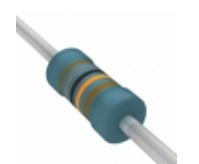


**RNMF14FTD5K62**

RES 5.62K OHM 1/4W 1% AXIAL

[Stackpole Electronics Inc.](#)

RFQ

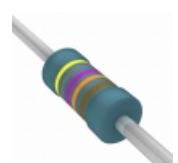


**SFR2500001803FR500**

RES 180K OHM 0.4W 1% AXIAL

[Vishay BC Components](#)

RFQ



**MBA02040C4873FRP00**

RES 487K OHM 0.4W 1% AXIAL

[Vishay BC Components](#)

RFQ



**ROX3SJR10**

RES 0.10 OHM 3W 5% AXIAL

[TE Connectivity Passive Product](#)

RFQ



**CMF5523R200FKEA**

RES 23.2 OHM 1/2W 1% AXIAL

[Vishay Dale](#)

RFQ



**CMF0739R000GNR680**

RES 39 OHM 1/2W 2% AXIAL

[Vishay Dale](#)

RFQ



**CMF5026R400FHEK**

RES 26.4 OHM 1/4W 1% AXIAL

[Vishay Dale](#)

RFQ