

DS2790G+



Maxim Integrated

IC FUEL GAUGE BATT 28-TDFN
Lead free / RoHS Compliant
Integrated Circuits (ICs)

[DS2790G+.pdf](#)

[Buy Now](#)

We can supply DS2790G+, use the request quote form to request DS2790G+ price and lead time. Zeano is a professional electronic components distributor. With 3+ Million line items of available electronic components can ship in short lead-time, over 250 thousand part numbers of electronic components in stock for immediately delivery, which may include part number DS2790G+. The price and lead time for DS2790G+ depending on the quantity required and warehouse location. Contact us and our sales representative will provide you price. We look forward to work with you.

Shopping Process



Confirm the product



submit the order



payment



wait for delivery



receive the goods

Specifications

Supplier Device Package:	28-TDFN-EP (8x4)
Series:	-
Packaging:	Tube
Package / Case:	28-TDFN
Operating Temperature:	-20°C ~ 70°C (TA)
Number of Cells:	1
Interface:	I ² C
Function:	Multi-Function Controller
Fault Protection:	Over Current, Over Temperature, Over/Under Voltage
Battery Chemistry:	Lithium-Ion

Related products



DS2790G+T&R
IC FUEL GAUGE BATT 28-TDFN
[Maxim Integrated](#)

RFQ



DS2790E+T&R
IC FUEL GAUGE BATT 28TSSOP
[Maxim Integrated](#)

RFQ



DS280BR810ZBFT
IC REPEATER 8CH 135NFBGA
[N/A](#)

RFQ



DS2790E+
IC FUEL GAUGE BATT 28TSSOP
[Maxim Integrated](#)

RFQ



DS2790E
in stock
[MAXIM](#)

RFQ



DS28015K00
[MAXIM](#)

RFQ



DS2790G
in stock
[MAXIM](#)

RFQ



DS2792G+
IC PROG FUEL GAUGE W/UART 28TDFN
[Maxim Integrated](#)

RFQ



DS2790
in stock
[MAXIM](#)

RFQ



DS2792G+T&R
IC FUEL GAUGE BATT 28-TDFN
[Maxim Integrated](#)

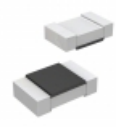
RFQ

Guess You May Looking For



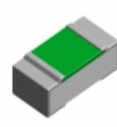
RNCF1206BKE29R4
RES SMD 29.4 OHM 0.1% 1/3W 1206
[Stackpole Electronics Inc.](#)

RFQ



CRT0805-BY-2002ELF
RES SMD 20K OHM 0.1% 1/8W 0805
[Boums Inc.](#)

RFQ



ERA-2HEB1800X
RES SMD 180 OHM 0.1% 1/16W 0402
[Panasonic Electronic Components](#)

RFQ



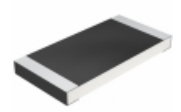
ERA-2HEB1242X
RES SMD 12.4KOHM 0.1% 1/16W 0402
[Panasonic Electronic Components](#)

RFQ



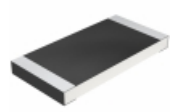
RG2012N-5622-D-T5
RES SMD 56.2K OHM 0.5% 1/8W 0805
[Susumu](#)

RFQ



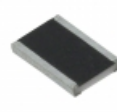
CRCW2512221RFKGTG
RES SMD 221 OHM 1% 1W 2512
[Vishay Dale](#)

RFQ



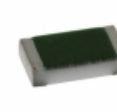
CRCW2512330RFKGTG
RES SMD 330 OHM 1% 1W 2512
[Vishay Dale](#)

RFQ



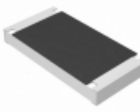
RCL121882K0FKEK
RES SMD 82K OHM 1W 1812 WIDE
[Vishay Dale](#)

RFQ



TNPW0603493RBEEA
RES SMD 493 OHM 0.1% 1/10W 0603
[Vishay Dale](#)

RFQ



ERJ-S1DF17R4U
RES SMD 17.4 OHM 1% 3/4W 2010
[Panasonic Electronic Components](#)

RFQ